

PE/Cy5® Anti-CD11b antibody [M1/70] ab25533

★★★★★ [13 Abreviews](#) [9 References](#) [4 图像](#)

概述

产品名称	PE/Cy5® Anti-CD11b抗体[M1/70]
描述	PE/Cy5®大鼠单克隆抗体[M1/70] to CD11b
宿主	Rat
偶联物	PE/Cy5®. Ex: 496nm, Em: 670nm
经测试应用	适用于: Flow Cyt
种属反应性	与反应: Mouse
免疫原	Tissue/ cell preparation (Mouse) - C57BL/10 mouse splenic T cells and concanavalin A activated C57BL/10 splenocytes.
阳性对照	Mouse spleen cells.
常规说明	<p>This product or portions thereof is manufactured under license from Carnegie Mellon University under U.S. Patent Number 5, 268, 486 and related patents. Cy® and CyDye® are trademarks of Cytiva.</p> <p>The Life Science industry has been in the grips of a reproducibility crisis for a number of years. Abcam is leading the way in addressing this with our range of recombinant monoclonal antibodies and knockout edited cell lines for gold-standard validation. Please check that this product meets your needs before purchasing.</p> <p>If you have any questions, special requirements or concerns, please send us an inquiry and/or contact our Support team ahead of purchase. Recommended alternatives for this product can be found below, along with publications, customer reviews and Q&As</p>

性能

形式	Liquid
存放说明	Shipped at 4°C. Store at +4°C.
存储溶液	<p>pH: 7.20</p> <p>Preservative: 0.09% Sodium azide</p> <p>Constituents: 0.1% Gelatin, 0.14% Monobasic dihydrogen sodium phosphate, 0.87% Sodium chloride</p>
纯度	Affinity purified
克隆	单克隆

克隆编号	M1/70
同种型	IgG2b
轻链类型	kappa

应用

The Abpromise guarantee

Abpromise™承诺保证使用ab25533于以下的经测试应用

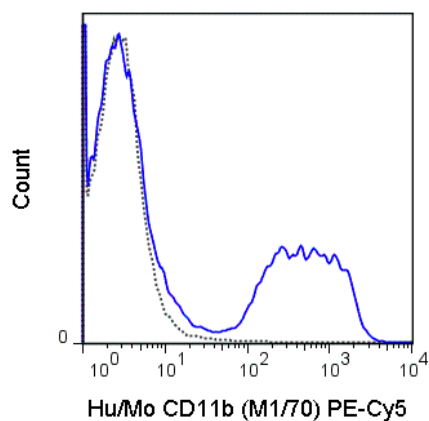
“应用说明”部分 下显示的仅为推荐的起始稀释度;实际最佳的稀释度/浓度应由使用者检定。

应用	Ab评论	说明
Flow Cyt	★★★★★ (11)	Use at an assay dependent concentration.

靶标

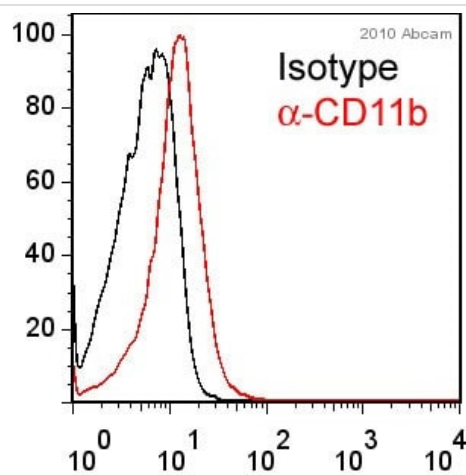
功能	Integrin alpha-M/beta-2 is implicated in various adhesive interactions of monocytes, macrophages and granulocytes as well as in mediating the uptake of complement-coated particles. It is identical with CR-3, the receptor for the iC3b fragment of the third complement component. It probably recognizes the R-G-D peptide in C3b. Integrin alpha-M/beta-2 is also a receptor for fibrinogen, factor X and ICAM1. It recognizes P1 and P2 peptides of fibrinogen gamma chain.
组织特异性	Predominantly expressed in monocytes and granulocytes.
疾病相关	Genetic variations in ITGAM has been associated with susceptibility to systemic lupus erythematosus type 6 (SLEB6) [MIM:609939]. Systemic lupus erythematosus (SLE) is a chronic, inflammatory and often febrile multisystemic disorder of connective tissue. It affects principally the skin, joints, kidneys and serosal membranes. It is thought to represent a failure of the regulatory mechanisms of the autoimmune system.
序列相似性	Belongs to the integrin alpha chain family. Contains 7 FG-GAP repeats. Contains 1 VWFA domain.
结构域	The integrin I-domain (insert) is a VWFA domain. Integrins with I-domains do not undergo protease cleavage.
细胞定位	Membrane.

图片



Flow Cytometry analysis of C57Bl/6 bone marrow cells labeling CD11b with ab25533 at 0.125 μ g (solid line) or Rat IgG2b (PE/Cy5[®]) isotype control at 0.125 μ g (dashed line).

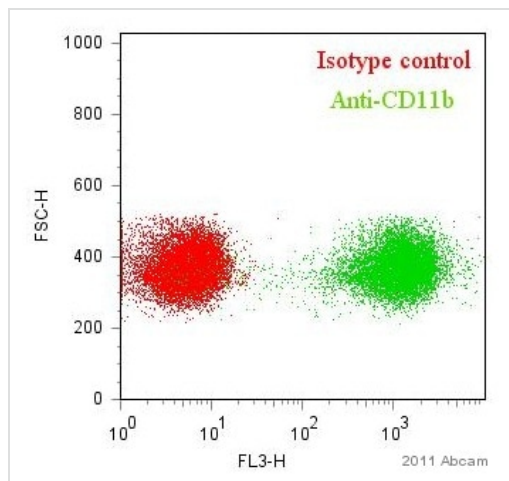
Flow Cytometry - PE/Cy5[®] Anti-CD11b antibody
[M1/70] (ab25533)



ab25533 staining CD11b in Human leukocytes by Flow Cytometry. Cells were prepared for staining after red blood cell lysis and were fixed in paraformaldehyde. The sample was incubated with the primary antibody (1/50 in PBS/BSA 1%) for 30 minutes at 4°C. Gating strategy: Neutrophils.

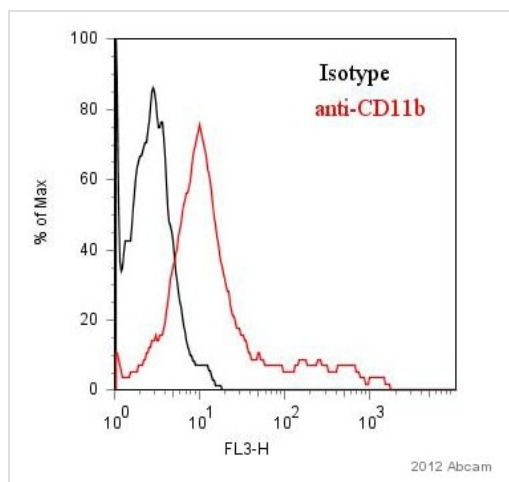
Flow Cytometry - PE/Cy5[®] Anti-CD11b antibody
[M1/70] (ab25533)

This image is courtesy of an anonymous Abreview



Flow Cytometry - PE/Cy5® Anti-CD11b antibody
[M1/70] (ab25533)

Scatter plot showing mouse blood leukocyte cells stained with ab25533 (green). The cells were harvested from blood drawn from mice and prepared in PBS/BSA 1%. Cells were fixed in formaldehyde. The cells were then incubated in 1x PBS / 1% BSA to block non-specific protein-protein interactions followed by the antibody (1/100) for 30 min at 4°C. Isotype control antibody (red) was used under the same conditions.



Flow Cytometry - PE/Cy5® Anti-CD11b antibody
[M1/70] (ab25533)

This image is courtesy of an anonymous Abreview

ab25533 staining CD11b in Rat splenocytes by Flow Cytometry. Rat spleen was homogenized and red blood cells were lysed in PBS + 1% BSA and 0.01% sodium azide. The sample was incubated with the primary antibody (1/100 in PBS + 1% BSA and 0.01% sodium azide) for 1 hour at 4°C.

Gating Strategy: Live Macrophages.

Please note: All products are "FOR RESEARCH USE ONLY. NOT FOR USE IN DIAGNOSTIC PROCEDURES"

Our Abpromise to you: Quality guaranteed and expert technical support

- Replacement or refund for products not performing as stated on the datasheet
- Valid for 12 months from date of delivery
- Response to your inquiry within 24 hours

- We provide support in Chinese, English, French, German, Japanese and Spanish
- Extensive multi-media technical resources to help you
- We investigate all quality concerns to ensure our products perform to the highest standards

If the product does not perform as described on this datasheet, we will offer a refund or replacement. For full details of the Abpromise, please visit <https://www.abcam.cn/abpromise> or contact our technical team.

Terms and conditions

- Guarantee only valid for products bought direct from Abcam or one of our authorized distributors