

PE/Cy5® Anti-CD10 antibody [CB-CALLA] ab95543

1 图像

概述

产品名称	PE/Cy5® Anti-CD10抗体[CB-CALLA]
描述	PE/Cy5®小鼠单克隆抗体[CB-CALLA] to CD10
宿主	Mouse
偶联物	PE/Cy5®. Ex: 496nm, Em: 670nm
经测试应用	适用于: Flow Cyt
种属反应性	与反应: Human
免疫原	Full length protein corresponding to Human CD10. native protein Database link: P08473
表位	There is partial blocking of the CB-CALLA and MEM-78 monoclonal antibodies, indicating that they recognize similar epitopes.
阳性对照	Human peripheral blood cells
常规说明	<p>The Life Science industry has been in the grips of a reproducibility crisis for a number of years. Abcam is leading the way in addressing this with our range of recombinant monoclonal antibodies and knockout edited cell lines for gold-standard validation. Please check that this product meets your needs before purchasing.</p> <p>If you have any questions, special requirements or concerns, please send us an inquiry and/or contact our Support team ahead of purchase. Recommended alternatives for this product can be found below, along with publications, customer reviews and Q&As</p>

性能

形式	Liquid
存放说明	Shipped at 4°C. Store at +4°C.
存储溶液	pH: 7.20 Preservative: 0.09% Sodium azide Constituents: BSA, Gelatin, PBS
纯度	Protein G purified
克隆	单克隆
克隆编号	CB-CALLA
同种型	IgG2b

应用

The Abpromise guarantee **Abpromise™**承诺保证使用ab95543于以下的经测试应用

“应用说明”部分 下显示的仅为推荐的起始稀释度;实际最佳的稀释度/浓度应由使用者检定。

应用	Ab评论	说明
Flow Cyt		Use 5µl for 10 ⁶ cells. ab91535 - Mouse monoclonal IgG2b, is suitable for use as an isotype control with this antibody.

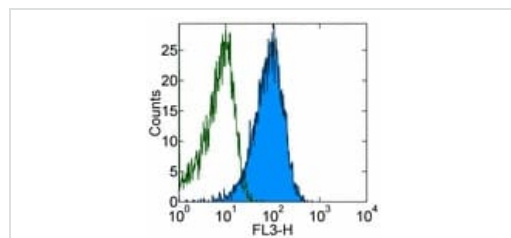
靶标

功能 Thermolysin-like specificity, but is almost confined on acting on polypeptides of up to 30 amino acids. Biologically important in the destruction of opioid peptides such as Met- and Leu-enkephalins by cleavage of a Gly-Phe bond. Able to cleave angiotensin-1, angiotensin-2 and angiotensin 1-9. Involved in the degradation of atrial natriuretic factor (ANF). Displays UV-inducible elastase activity toward skin preelastic and elastic fibers.

序列相似性 Belongs to the peptidase M13 family.

细胞定位 Cell membrane.

图片



Staining of normal Human peripheral blood cells with staining buffer (autofluorescence) (open histogram), or ab95543 (colored histogram). Cells in the granulocyte gate were used for analysis.

Flow Cytometry - PE/Cy5® Anti-CD10 antibody [CB-CALLA] (ab95543)

Please note: All products are "FOR RESEARCH USE ONLY. NOT FOR USE IN DIAGNOSTIC PROCEDURES"

Our Abpromise to you: Quality guaranteed and expert technical support

- Replacement or refund for products not performing as stated on the datasheet
- Valid for 12 months from date of delivery
- Response to your inquiry within 24 hours
- We provide support in Chinese, English, French, German, Japanese and Spanish

- Extensive multi-media technical resources to help you
- We investigate all quality concerns to ensure our products perform to the highest standards

If the product does not perform as described on this datasheet, we will offer a refund or replacement. For full details of the Abpromise, please visit <https://www.abcam.cn/abpromise> or contact our technical team.

Terms and conditions

- Guarantee only valid for products bought direct from Abcam or one of our authorized distributors