

### PE Anti-VCAM1 antibody [M/K-2] ab25452

[1 References](#) [1 图像](#)

#### 概述

产品名称	PE Anti-VCAM1抗体[M/K-2]
描述	PE大鼠单克隆抗体[M/K-2] to VCAM1
宿主	Rat
偶联物	PE. Ex: 488nm, Em: 575nm
特异性	ab25452 recognises CD106/VCAM1 (100 kDa)
经测试应用	<b>适用于:</b> Flow Cyt
种属反应性	<b>与反应:</b> Mouse
免疫原	Tissue, cells or virus corresponding to VCAM1. BALB/3T3 and +/-2.4 cells
阳性对照	Flow Cyt: Mouse bone marrow cells.
常规说明	

The M/K-2 monoclonal antibody has been used in transplant studies to suppress cardiac rejection and induce long term cardiac graft survival. It immunoprecipitates a peptide that gives a single band on SDS-PAGE gels with an apparent Mr of ~100 kDa under reducing conditions and 92 kDa under nonreducing conditions.

The Life Science industry has been in the grips of a reproducibility crisis for a number of years. Abcam is leading the way in addressing this with our range of recombinant monoclonal antibodies and knockout edited cell lines for gold-standard validation. Please check that this product meets your needs before purchasing.

If you have any questions, special requirements or concerns, please send us an inquiry and/or contact our Support team ahead of purchase. Recommended alternatives for this product can be found below, along with publications, customer reviews and Q&As

#### 性能

形式	Liquid
存放说明	Shipped at 4°C. Store at +4°C. Store In the Dark.
存储溶液	pH: 7.3 Preservative: 0.09% Sodium azide Constituents: PBS, 16% Sucrose  Stabilising agent.

纯度	Affinity purified
Primary antibody说明	The M/K-2 monoclonal antibody has been used in transplant studies to suppress cardiac rejection and induce long term cardiac graft survival. It immunoprecipitates a peptide that gives a single band on SDS-PAGE gels with an apparent Mr of ~100 kDa under reducing conditions and 92 kDa under nonreducing conditions.
克隆	单克隆
克隆编号	M/K-2
同种型	IgG1
轻链类型	kappa

应用

The Abpromise guarantee

Abpromise™承诺保证使用ab25452于以下的经测试应用

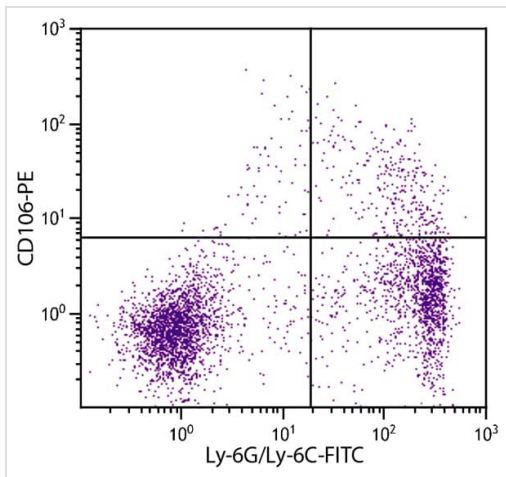
“应用说明”部分 下显示的仅为推荐的起始稀释度;实际最佳的稀释度/浓度应由使用者检定。

应用	Ab评论	说明
Flow Cyt		Use 0.2µg for 10 <sup>6</sup> cells. <b>ab154449</b> - Rat monoclonal IgG1, is suitable for use as an isotype control with this antibody.

靶标

功能	Important in cell-cell recognition. Appears to function in leukocyte-endothelial cell adhesion. Interacts with the beta-1 integrin VLA4 on leukocytes, and mediates both adhesion and signal transduction. The VCAM1/VLA4 interaction may play a pathophysiologic role both in immune responses and in leukocyte emigration to sites of inflammation.
组织特异性	Expressed on inflamed vascular endothelium, as well as on macrophage-like and dendritic cell types in both normal and inflamed tissue.
序列相似性	Contains 7 Ig-like C2-type (immunoglobulin-like) domains.
结构域	Either the first or the fourth Ig-like C2-type domain is required for VLA4-dependent cell adhesion.
翻译后修饰	Sialoglycoprotein.
细胞定位	Membrane.

图片



Flow Cytometry - PE Anti-VCAM1 antibody [M/K-2]  
(ab25452)

Flow cytometry analysis staining VCAM1 in mouse bone marrow cells using ab25452 at a dilution of 0.1  $\mu\text{g}/10^6$  cells.

**Please note:** All products are "FOR RESEARCH USE ONLY. NOT FOR USE IN DIAGNOSTIC PROCEDURES"

### Our Abpromise to you: Quality guaranteed and expert technical support

- Replacement or refund for products not performing as stated on the datasheet
- Valid for 12 months from date of delivery
- Response to your inquiry within 24 hours
- We provide support in Chinese, English, French, German, Japanese and Spanish
- Extensive multi-media technical resources to help you
- We investigate all quality concerns to ensure our products perform to the highest standards

If the product does not perform as described on this datasheet, we will offer a refund or replacement. For full details of the Abpromise, please visit <https://www.abcam.cn/abpromise> or contact our technical team.

### Terms and conditions

- Guarantee only valid for products bought direct from Abcam or one of our authorized distributors