

PE Anti-TLR8 antibody [44C143] ab45097

[5 References](#) [1 图像](#)

概述

产品名称	PE Anti-TLR8抗体[44C143]
描述	PE小鼠单克隆抗体[44C143] to TLR8
宿主	Mouse
偶联物	PE. Ex: 488nm, Em: 575nm
经测试应用	适用于: Flow Cyt (Intra)
种属反应性	与反应: Human
免疫原	This antibody was developed against a KLH-conjugated synthetic peptide of human TLR8, within amino acids 750-850.
阳性对照	Flow Cyt (intra): Ramos or RAW cells.
常规说明	<p>The Life Science industry has been in the grips of a reproducibility crisis for a number of years. Abcam is leading the way in addressing this with our range of recombinant monoclonal antibodies and knockout edited cell lines for gold-standard validation. Please check that this product meets your needs before purchasing.</p> <p>If you have any questions, special requirements or concerns, please send us an inquiry and/or contact our Support team ahead of purchase. Recommended alternatives for this product can be found below, along with publications, customer reviews and Q&As</p>

性能

形式	Liquid
存放说明	Shipped at 4°C. Store at +4°C.
存储溶液	Preservative: 0.05% Sodium azide Constituent: PBS
纯度	Protein G purified
克隆	单克隆
克隆编号	44C143
同种型	IgG1

应用

The Abpromise guarantee

Abpromise™ 承诺保证使用 ab45097 于以下的经测试应用

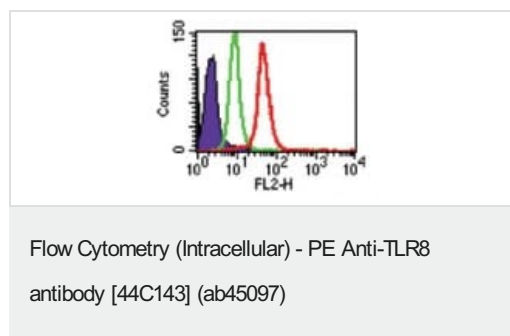
“应用说明”部分下显示的仅为推荐的起始稀释度；实际最佳的稀释度/浓度应由使用者检定。

应用	Ab评论	说明
Flow Cyt (Intra)		Use 2-5 μ g for 10 ⁶ cells. ab91357 - Mouse monoclonal IgG1, is suitable for use as an isotype control with this antibody.

靶标

功能	Key component of innate and adaptive immunity. TLRs (Toll-like receptors) control host immune response against pathogens through recognition of molecular patterns specific of microorganisms. Acts via MYD88 and TRAF6, leading to NF-kappa-B activation, cytokine secretion and the inflammatory response.
组织特异性	Detected in brain, heart, lung, liver, placenta, in monocytes, and at lower levels in CD11c+ immature dendritic cells.
序列相似性	Belongs to the Toll-like receptor family. Contains 23 LRR (leucine-rich) repeats. Contains 1 LRRCT domain. Contains 1 TIR domain.
细胞定位	Membrane.

图片



ab45097 at 2 μ g/10⁶ cells staining Ramos cells by flow cytometry analysis. The shaded histogram represents cells without antibody, green represents isotype control and red represents ab45097.

Please note: All products are "FOR RESEARCH USE ONLY. NOT FOR USE IN DIAGNOSTIC PROCEDURES"

Our Abpromise to you: Quality guaranteed and expert technical support

- Replacement or refund for products not performing as stated on the datasheet
- Valid for 12 months from date of delivery
- Response to your inquiry within 24 hours
- We provide support in Chinese, English, French, German, Japanese and Spanish
- Extensive multi-media technical resources to help you
- We investigate all quality concerns to ensure our products perform to the highest standards

If the product does not perform as described on this datasheet, we will offer a refund or replacement. For full details of the Abpromise, please visit <https://www.abcam.cn/abpromise> or contact our technical team.

Terms and conditions

- Guarantee only valid for products bought direct from Abcam or one of our authorized distributors