

PE Anti-TLR3 antibody [40C1285.6] ab45093

★★★★★ [2 Abreviews](#) [1 References](#) [2 图像](#)

概述

产品名称	PE Anti-TLR3抗体[40C1285.6]
描述	PE小鼠单克隆抗体[40C1285.6] to TLR3
宿主	Mouse
偶联物	PE. Ex: 488nm, Em: 575nm
经测试应用	适用于: Flow Cyt (Intra)
种属反应性	与反应: Human
免疫原	This antibody was developed against KLH-conjugated synthetic peptide of human TLR3.
阳性对照	Human intestine or Ramos. Flow Cyt (Intra): Ramos, A549 cells
常规说明	<p>The Life Science industry has been in the grips of a reproducibility crisis for a number of years. Abcam is leading the way in addressing this with our range of recombinant monoclonal antibodies and knockout edited cell lines for gold-standard validation. Please check that this product meets your needs before purchasing.</p> <p>If you have any questions, special requirements or concerns, please send us an inquiry and/or contact our Support team ahead of purchase. Recommended alternatives for this product can be found below, along with publications, customer reviews and Q&As</p>

性能

形式	Liquid
存放说明	Shipped at 4°C. Store at +4°C.
存储溶液	Preservative: 0.02% Sodium azide Constituent: PBS
纯度	Protein G purified
克隆	单克隆
克隆编号	40C1285.6
同种型	IgG1

应用

The Abpromise guarantee

Abpromise™承诺保证使用ab45093于以下的经测试应用

“应用说明”部分 下显示的仅为推荐的起始稀释度;实际最佳的稀释度/浓度应由使用者检定。

应用	Ab评论	说明
Flow Cyt (Intra)		

应用说明

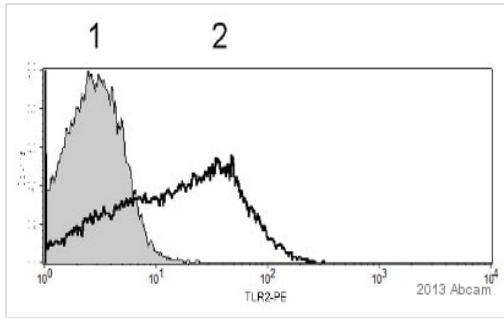
FACS:(Intracellular) Use 2 - 5µg for 10⁶ cells.
WB: Use at a concentration of 1 - 3 µg/ml. Predicted molecular weight: 104 kDa.

This antibody has tested negative by western blot in mouse intestine cell lysate.

Not yet tested in other applications.
Optimal dilutions/concentrations should be determined by the end user.

靶标	
功能	Key component of innate and adaptive immunity. TLRs (Toll-like receptors) control host immune response against pathogens through recognition of molecular patterns specific of microorganisms. TLR3 is a nucleotide-sensing TLR which is activated by double-stranded RNA, a sign of viral infection. Acts via MYD88 and TRAF6, leading to NF-kappa-B activation, cytokine secretion and the inflammatory response.
组织特异性	Expressed at high level in placenta and pancreas. Also detected in CD11c+ immature dendritic cells. Only expressed in dendritic cells and not in other leukocytes, including monocyte precursors. TLR3 is the TLR that is expressed most strongly in the brain, especially in astrocytes, glia, and neurons.
疾病相关	Defects in TLR3 are associated with herpes simplex encephalitis type 2 (HSE2) [MIM:613002]. HSE is a rare complication of human herpesvirus 1 (HHV-1) infection, occurring in only a small minority of HHV-1 infected individuals. HSE is characterized by hemorrhagic necrosis of parts of the temporal and frontal lobes. Onset is over several days and involves fever, headache, seizures, stupor, and often coma, frequently with a fatal outcome. Note=TLR3 mutations predispose otherwise healthy individuals to isolated herpes simplex encephalitis through a mechanism that involves impaired IFNs production and reduced immune defense against viral infection in the central nervous system.
序列相似性	Belongs to the Toll-like receptor family. Contains 22 LRR (leucine-rich) repeats. Contains 1 LRRCT domain. Contains 1 LRRNT domain. Contains 1 TIR domain.
结构域	ds-RNA binding is mediated by LRR 1 to 3, and LRR 17 to 18.
翻译后修饰	Heavily N-glycosylated, except on that part of the surface of the ectodomain that is involved in ligand binding.
细胞定位	Endoplasmic reticulum membrane. Endosome membrane.

图片

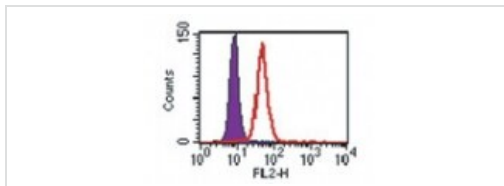


Flow Cytometry (Intracellular) - PE Anti-TLR3

antibody [40C1285.6] (ab45093)

This image is courtesy of an anonymous Abreview

ab45093 staining TLR3 in Human A549 (lung epithelial) cell line by Flow Cytometry. The sample was incubated with the primary antibody (5µg/ml in 0.1% Saponin + 1% FCS in PBS) for 45 minutes at 4°C. 1 = isotype control, 2 = ab45093



Flow Cytometry (Intracellular) - PE Anti-TLR3

antibody [40C1285.6] (ab45093)

ab45093, at 3 ug/ 1X10⁶ cells, staining Ramos cells by Intracellular flow cytometric analysis. Toll-Like-Receptor3 (open peak) and isotype negative control (shaded peak).

Please note: All products are "FOR RESEARCH USE ONLY. NOT FOR USE IN DIAGNOSTIC PROCEDURES"

Our Abpromise to you: Quality guaranteed and expert technical support

- Replacement or refund for products not performing as stated on the datasheet
- Valid for 12 months from date of delivery
- Response to your inquiry within 24 hours
- We provide support in Chinese, English, French, German, Japanese and Spanish
- Extensive multi-media technical resources to help you
- We investigate all quality concerns to ensure our products perform to the highest standards

If the product does not perform as described on this datasheet, we will offer a refund or replacement. For full details of the Abpromise, please visit <https://www.abcam.cn/abpromise> or contact our technical team.

Terms and conditions

- Guarantee only valid for products bought direct from Abcam or one of our authorized distributors