

PE Anti-PSMA antibody [GCP-05] ab77228

8 References [1 图像](#)

概述

产品名称	PE Anti-PSMA抗体[GCP-05]
描述	PE小鼠单克隆抗体[GCP-05] to PSMA
宿主	Mouse
偶联物	PE. Ex: 488nm, Em: 575nm
特异性	ab77228 recognizes extracellular domain of PSMA, expressed mainly in tumour neovasculatures, nervous system and jejunum, which is an important prostate tumour marker.
经测试应用	适用于: Flow Cyt
种属反应性	与反应: Human
免疫原	Recombinant fragment, corresponding to amino acids 44-750 of Human PSMA
常规说明	<p>The antibody is conjugated with R-Phycoerythrin (PE) under optimum conditions.</p> <p>The Life Science industry has been in the grips of a reproducibility crisis for a number of years. Abcam is leading the way in addressing this with our range of recombinant monoclonal antibodies and knockout edited cell lines for gold-standard validation. Please check that this product meets your needs before purchasing.</p> <p>If you have any questions, special requirements or concerns, please send us an inquiry and/or contact our Support team ahead of purchase. Recommended alternatives for this product can be found below, along with publications, customer reviews and Q&As</p>

性能

形式	Liquid
存放说明	Shipped at 4°C. Store at +4°C.
存储溶液	<p>pH: 7.4</p> <p>Preservative: 0.097% Sodium azide</p> <p>Constituents: 0.2% BSA, PBS</p>
纯度	Size exclusion
克隆	单克隆
克隆编号	GCP-05
同种型	IgG1

应用

The Abpromise guarantee

Abpromise™ 承诺保证使用 ab77228 于以下的经测试应用

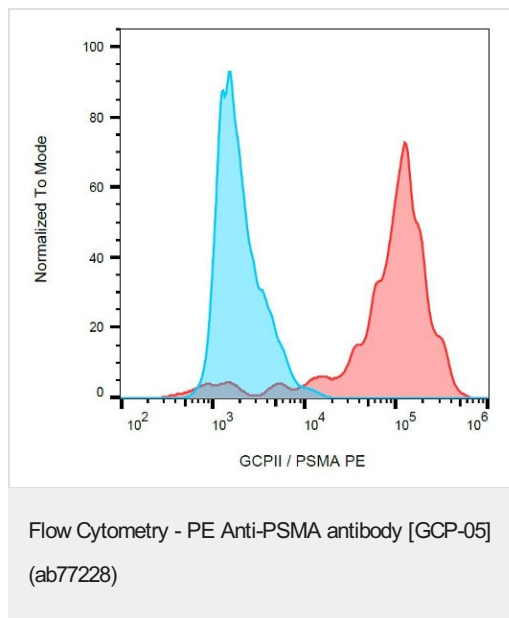
“应用说明”部分 下显示的仅为推荐的起始稀释度;实际最佳的稀释度/浓度应由使用者检定。

应用	Ab 评论	说明
Flow Cyt		Use a concentration of 5 µg/ml. ab91357 - Mouse monoclonal IgG1, is suitable for use as an isotype control with this antibody.

靶标

功能	Has both folate hydrolase and N-acetylated-alpha-linked-acidic dipeptidase (NAALADase) activity. Has a preference for tri-alpha-glutamate peptides. In the intestine, required for the uptake of folate. In the brain, modulates excitatory neurotransmission through the hydrolysis of the neuropeptide, N-acetylaspartylglutamate (NAAG), thereby releasing glutamate. Isoform PSM-4 and isoform PSM-5 would appear to be physiologically irrelevant. Involved in prostate tumor progression. Also exhibits a dipeptidyl-peptidase IV type activity. In vitro, cleaves Gly-Pro-AMC.
组织特异性	Highly expressed in prostate epithelium. Detected in urinary bladder, kidney, testis, ovary, fallopian tube, breast, adrenal gland, liver, esophagus, stomach, small intestine, colon and brain (at protein level). Detected in the small intestine, brain, kidney, liver, spleen, colon, trachea, spinal cord and the capillary endothelium of a variety of tumors. Expressed specifically in jejunum brush border membranes. In the brain, highly expressed in the ventral striatum and brain stem. Also expressed in fetal liver and kidney. Isoform PSMA' is the most abundant form in normal prostate. Isoform PSMA-1 is the most abundant form in primary prostate tumors. Isoform PSMA-2 is also found in normal prostate as well as in brain and liver. Isoform PSMA-9 is specifically expressed in prostate cancer.
序列相似性	Belongs to the peptidase M28 family. M28B subfamily.
结构域	The NAALADase activity is found in the central region, the dipeptidyl peptidase IV type activity in the C-terminal.
翻译后修饰	The first two amino acids at the N-terminus of isoform PSMA' appear to be cleaved by limited proteolysis. The N-terminus is blocked.
细胞定位	Cytoplasm and Cell membrane.

图片



Surface staining (flow cytometry) of GCPII / PSMA using anti-GCPII (GCP-05) PE on LNCaP cell line.

Please note: All products are "FOR RESEARCH USE ONLY. NOT FOR USE IN DIAGNOSTIC PROCEDURES"

Our Abpromise to you: Quality guaranteed and expert technical support

- Replacement or refund for products not performing as stated on the datasheet
- Valid for 12 months from date of delivery
- Response to your inquiry within 24 hours
- We provide support in Chinese, English, French, German, Japanese and Spanish
- Extensive multi-media technical resources to help you
- We investigate all quality concerns to ensure our products perform to the highest standards

If the product does not perform as described on this datasheet, we will offer a refund or replacement. For full details of the Abpromise, please visit <https://www.abcam.cn/abpromise> or contact our technical team.

Terms and conditions

- Guarantee only valid for products bought direct from Abcam or one of our authorized distributors