

PE Anti-PD-L2 antibody [TY25] ab93589

4 References 1 图像

概述	
产品名称	PE Anti-PD-L2抗体[TY25]
描述	PE大鼠单克隆抗体[TY25] to PD-L2
宿主	Rat
偶联物	PE. Ex: 488nm, Em: 575nm
经测试应用	适用于: Flow Cyt
种属反应性	与反应: Mouse
免疫原	Tissue, cells or virus corresponding to Mouse PD-L2. Mouse PD-L2 transfected cell line. Database link: <a href="#">Q9BQ51</a>
阳性对照	Flow Cyt: Mouse splenocyte suspensions and B7-DC-transfected cells.
常规说明	<p>The Life Science industry has been in the grips of a reproducibility crisis for a number of years. Abcam is leading the way in addressing this with our range of recombinant monoclonal antibodies and knockout edited cell lines for gold-standard validation. Please check that this product meets your needs before purchasing.</p> <p>If you have any questions, special requirements or concerns, please send us an inquiry and/or contact our Support team ahead of purchase. Recommended alternatives for this product can be found below, along with publications, customer reviews and Q&amp;As</p>
性能	
形式	Liquid
存放说明	Shipped at 4°C. Store at +4°C.
存储溶液	pH: 7.20 Preservative: 0.09% Sodium azide Constituents: 0.87% Sodium chloride, PBS
纯度	Protein G purified
克隆	单克隆
克隆编号	TY25
同种型	IgG2a
轻链类型	kappa

## 应用

### The Abpromise guarantee

**Abpromise™** 承诺保证使用 ab93589 于以下的经测试应用

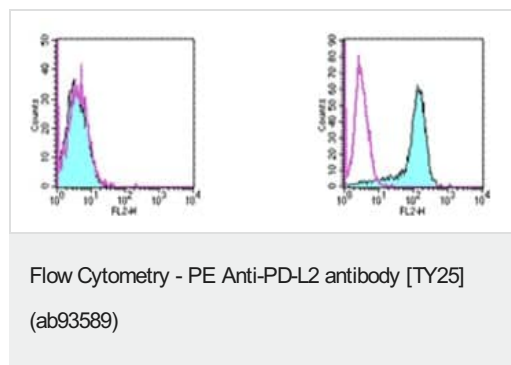
“应用说明”部分 下显示的仅为推荐的起始稀释度; 实际最佳的稀释度/浓度应由使用者检定。

应用	Ab 评论	说明
Flow Cyt		Use 0.06-0.5µg for 10 <sup>5-8</sup> cells.

## 靶标

功能	Involved in the costimulatory signal, essential for T-cell proliferation and IFNG production in a PDCD1-independent manner. Interaction with PDCD1 inhibits T-cell proliferation by blocking cell cycle progression and cytokine production.
组织特异性	Highly expressed in heart, placenta, pancreas, lung and liver and weakly expressed in spleen, lymph nodes and thymus.
序列相似性	Belongs to the immunoglobulin superfamily. BTN/MOG family. Contains 1 Ig-like C2-type (immunoglobulin-like) domain. Contains 1 Ig-like V-type (immunoglobulin-like) domain.
细胞定位	Secreted; Cell membrane and Endomembrane system.

## 图片



Staining of non-transfected (left) and mouse PD-L2 transfected (right) cells with 0.25µg PE Rat IgG2a isotype control (open histogram) or 0.06µg ab93589 (colored histogram). Total viable cells were used for analysis.

**Please note:** All products are "FOR RESEARCH USE ONLY. NOT FOR USE IN DIAGNOSTIC PROCEDURES"

### Our Abpromise to you: Quality guaranteed and expert technical support

- Replacement or refund for products not performing as stated on the datasheet
- Valid for 12 months from date of delivery
- Response to your inquiry within 24 hours
- We provide support in Chinese, English, French, German, Japanese and Spanish
- Extensive multi-media technical resources to help you
- We investigate all quality concerns to ensure our products perform to the highest standards

If the product does not perform as described on this datasheet, we will offer a refund or replacement. For full details of the Abpromise, please visit <https://www.abcam.cn/abpromise> or contact our technical team.

#### **Terms and conditions**

---

- Guarantee only valid for products bought direct from Abcam or one of our authorized distributors