

PE Anti-P Glycoprotein antibody [UIC2] ab93590

10 References **1 图像**

概述

产品名称	PE Anti-P Glycoprotein抗体[UIC2]
描述	PE小鼠单克隆抗体[UIC2] to P Glycoprotein
宿主	Mouse
偶联物	PE. Ex: 488nm, Em: 575nm
经测试应用	适用于: Flow Cyt
种属反应性	与反应: Human
免疫原	Tissue, cells or virus corresponding to P Glycoprotein. Mouse Balb/c 3T3 fibroblasts transfected with Human P Glycoprotein cDNA
阳性对照	8226 DOX40 and 8226/S cell lines
常规说明	<p>ab93590 has been reported to inhibit MDR1-mediated efflux.</p> <p>The Life Science industry has been in the grips of a reproducibility crisis for a number of years. Abcam is leading the way in addressing this with our range of recombinant monoclonal antibodies and knockout edited cell lines for gold-standard validation. Please check that this product meets your needs before purchasing.</p> <p>If you have any questions, special requirements or concerns, please send us an inquiry and/or contact our Support team ahead of purchase. Recommended alternatives for this product can be found below, along with publications, customer reviews and Q&As</p>

性能

形式	Liquid
存放说明	Shipped at 4°C. Store at +4°C.
存储溶液	pH: 7.2 Preservative: 0.09% Sodium azide
纯度	Protein G purified
Primary antibody说明	ab93590 has been reported to inhibit MDR1-mediated efflux.
克隆	单克隆
克隆编号	UIC2

同种型

IgG2a

应用

The Abpromise guarantee

Abpromise™承诺保证使用ab93590于以下的经测试应用

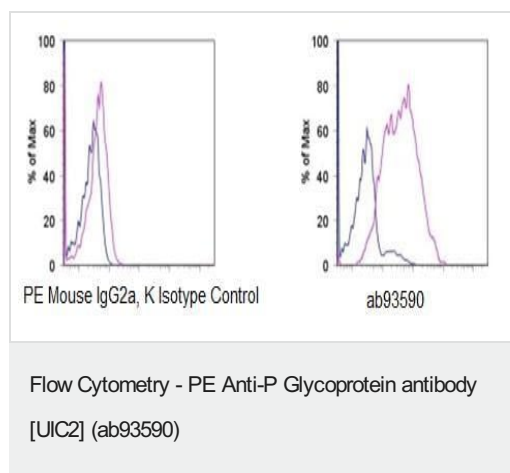
“应用说明”部分 下显示的仅为推荐的起始稀释度;实际最佳的稀释度/浓度应由使用者检定。

应用	Ab评论	说明
Flow Cyt		Use 5µl for 10 ⁶ cells. Use 5 µl/test for 10 ⁵ -8 cells in 100µl.

靶标

功能	Energy-dependent efflux pump responsible for decreased drug accumulation in multidrug-resistant cells.
组织特异性	Expressed in liver, kidney, small intestine and brain.
疾病相关	Genetic variations in ABCB1 are associated with susceptibility to inflammatory bowel disease type 13 (IBD13) [MIM:612244]. Inflammatory bowel disease is characterized by a chronic relapsing intestinal inflammation. It is subdivided into Crohn disease and ulcerative colitis phenotypes. Crohn disease may involve any part of the gastrointestinal tract, but most frequently the terminal ileum and colon. Bowel inflammation is transmural and discontinuous; it may contain granulomas or be associated with intestinal or perianal fistulas. In contrast, in ulcerative colitis, the inflammation is continuous and limited to rectal and colonic mucosal layers; fistulas and granulomas are not observed. Both diseases include extraintestinal inflammation of the skin, eyes, or joints. Crohn disease and ulcerative colitis are commonly classified as autoimmune diseases.
序列相似性	Belongs to the ABC transporter superfamily. ABCB family. Multidrug resistance exporter (TC 3.A.1.201) subfamily. Contains 2 ABC transmembrane type-1 domains. Contains 2 ABC transporter domains.
细胞定位	Membrane.

图片



Staining of the human 8226/S (blue histogram) and human 8226 DOX40 (purple histogram) cell lines with PE Mouse IgG2a, K Isotype Control (left) or ab93590 (right). Total viable cells were used for analysis.

Please note: All products are "FOR RESEARCH USE ONLY. NOT FOR USE IN DIAGNOSTIC PROCEDURES"

Our Abpromise to you: Quality guaranteed and expert technical support

- Replacement or refund for products not performing as stated on the datasheet
- Valid for 12 months from date of delivery
- Response to your inquiry within 24 hours
- We provide support in Chinese, English, French, German, Japanese and Spanish
- Extensive multi-media technical resources to help you
- We investigate all quality concerns to ensure our products perform to the highest standards

If the product does not perform as described on this datasheet, we will offer a refund or replacement. For full details of the Abpromise, please visit <https://www.abcam.cn/abpromise> or contact our technical team.

Terms and conditions

- Guarantee only valid for products bought direct from Abcam or one of our authorized distributors