

PE Anti-NKR-P1C antibody [PK136] ab25027

1 图像

概述

产品名称	PE Anti-NKR-P1C抗体[PK136]
描述	PE小鼠单克隆抗体[PK136] to NKR-P1C
宿主	Mouse
偶联物	PE. Ex: 488nm, Em: 575nm
经测试应用	适用于: Flow Cyt
种属反应性	与反应: Mouse
免疫原	Tissue, cells or virus corresponding to Mouse NKR-P1C.
阳性对照	Flow Cyt: Mouse spleen cells.
常规说明	<p>This antibody can be used for <i>in vitro</i> complement dependent cytotoxicity assays, <i>in vivo</i> depletion and <i>in vitro</i> activation of NKR-P1C cells and <i>in vitro</i> redirected lysis.</p> <p>The Life Science industry has been in the grips of a reproducibility crisis for a number of years. Abcam is leading the way in addressing this with our range of recombinant monoclonal antibodies and knockout edited cell lines for gold-standard validation. Please check that this product meets your needs before purchasing.</p> <p>If you have any questions, special requirements or concerns, please send us an inquiry and/or contact our Support team ahead of purchase. Recommended alternatives for this product can be found below, along with publications, customer reviews and Q&As</p>

性能

形式	Liquid
存放说明	Shipped at 4°C. Store at +4°C. Do Not Freeze. Store In the Dark.
存储溶液	pH: 7.20 Preservative: 0.09% Sodium azide Constituents: 0.1% Gelatin, 0.88% Sodium chloride, 0.12% Monobasic dihydrogen sodium phosphate
纯度	Affinity purified
纯化说明	Purified from TCS
Primary antibody说明	This antibody can be used for <i>in vitro</i> complement dependent cytotoxicity assays, <i>in vivo</i> depletion and <i>in vitro</i> activation of NK1.1 cells and <i>in vitro</i> redirected lysis.

克隆	单克隆
克隆编号	PK136
同种型	IgG2a
轻链类型	kappa

应用

The Abpromise guarantee **Abpromise™** 承诺保证使用 ab25027 于以下的经测试应用

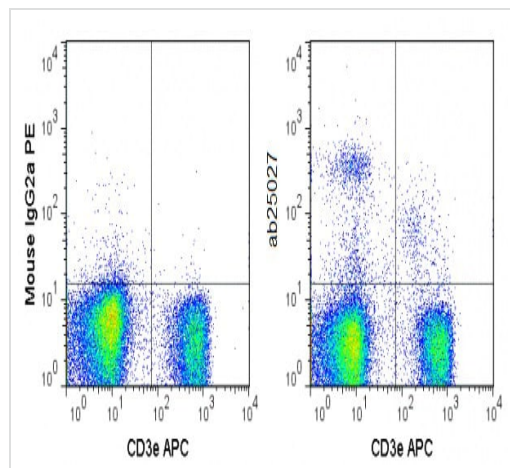
“应用说明”部分 下显示的仅为推荐的起始稀释度;实际最佳的稀释度/浓度应由使用者检定。

应用	Ab评论	说明
Flow Cyt		Use at an assay dependent concentration.

靶标

功能	Plays a stimulatory role on natural killer (NK) cells cytotoxicity. Activation by cross-linking of the receptor induces Ca(2+) mobilization and interferon-gamma production.
组织特异性	Expressed in natural killer cells.
序列相似性	Contains 1 C-type lectin domain.
细胞定位	Membrane.

图片



C57Bl/6 splenocytes stained with APC-conjugated anti-CD3e and 0.5µg ab25027 (right) or 0.5µg PE-conjugated mouse IgG2a isotype control (left).

Flow Cytometry - PE Anti-NKR-P1C antibody
[PK136] (ab25027)

Please note: All products are "FOR RESEARCH USE ONLY. NOT FOR USE IN DIAGNOSTIC PROCEDURES"

Our Abpromise to you: Quality guaranteed and expert technical support

-
- Replacement or refund for products not performing as stated on the datasheet
 - Valid for 12 months from date of delivery
 - Response to your inquiry within 24 hours

 - We provide support in Chinese, English, French, German, Japanese and Spanish
 - Extensive multi-media technical resources to help you
 - We investigate all quality concerns to ensure our products perform to the highest standards

If the product does not perform as described on this datasheet, we will offer a refund or replacement. For full details of the Abpromise, please visit <https://www.abcam.cn/abpromise> or contact our technical team.

Terms and conditions

- Guarantee only valid for products bought direct from Abcam or one of our authorized distributors