

PE Anti-MHC class II I E kappa antibody [14-4-4S] ab25585

[5 References](#) [1 图像](#)

概述

产品名称	PE Anti-MHC class II I E kappa抗体[14-4-4S]
描述	PE小鼠单克隆抗体[14-4-4S] to MHC class II I E kappa
宿主	Mouse
偶联物	PE. Ex: 488nm, Em: 575nm
特异性	This antibody is specific to an epitope on mouse I-E kappa MHC class II alloantigen. The antibody reacts with the I-E kappa class II alloantigen on cells from mice of the H-2 ^d , H-2 ^p , and H-2 ^r haplotypes. The antibody has also been reported to crossreact with the rat class II alloantigen RT1D.
经测试应用	适用于: Flow Cyt
种属反应性	与反应: Mouse
免疫原	Tissue/ cell preparation: C3H mouse skin graft and splenocytes.
阳性对照	Flow Cyt: AKR mouse splenocytes.
常规说明	<p>The Life Science industry has been in the grips of a reproducibility crisis for a number of years. Abcam is leading the way in addressing this with our range of recombinant monoclonal antibodies and knockout edited cell lines for gold-standard validation. Please check that this product meets your needs before purchasing.</p> <p>If you have any questions, special requirements or concerns, please send us an inquiry and/or contact our Support team ahead of purchase. Recommended alternatives for this product can be found below, along with publications, customer reviews and Q&As</p>

性能

形式	Liquid
存放说明	Shipped at 4°C. Store at +4°C. Store In the Dark.
存储溶液	pH: 7.3 Preservative: 0.09% Sodium azide Constituents: PBS, 16% Sucrose Also contains a stabilizing agent.
纯度	Protein A purified
克隆	单克隆

克隆编号	14-4-4S
同种型	IgG2a
轻链类型	kappa

应用

The Abpromise guarantee **Abpromise™**承诺保证使用ab25585于以下的经测试应用

“应用说明”部分 下显示的仅为推荐的起始稀释度;实际最佳的稀释度/浓度应由使用者检定。

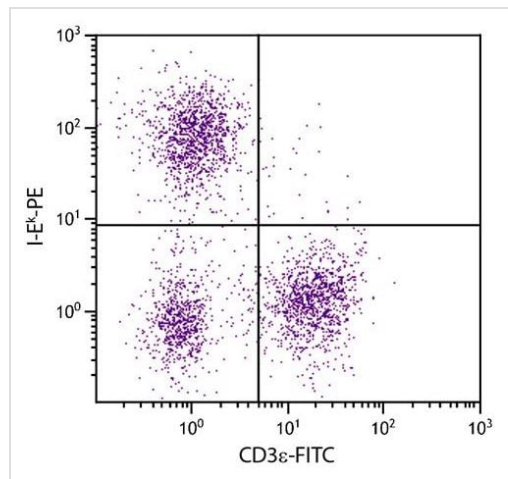
应用	Ab评论	说明
Flow Cyt		Use at an assay dependent concentration.

靶标

相关性 A major histocompatibility complex class II receptor. These display processed antigens from virally infected or transformed cells. Class II positive cells ('antigen presenting cells') can take up antigens from outside by endocytosis, degrade them into small peptides, and re export the peptides (now bound to MHC class II protein) to the cell surface. These peptide MHC class II complexes can then be recognized by specific CD4+ lymphocytes.

细胞定位 Type I membrane protein

图片



Flow cytometric analysis of AKR mouse splenocytes labeling MHC class II E kappa using ab25585 at 0.1 $\mu\text{g}/10^6$ cells in 100 μl . CD3 ϵ is labeled using a Rat Anti-Mouse CD3 ϵ (FITC) antibody.

Flow Cytometry - PE Anti-MHC class II I E kappa antibody [14-4-4S] (ab25585)

Please note: All products are "FOR RESEARCH USE ONLY. NOT FOR USE IN DIAGNOSTIC PROCEDURES"

Our Abpromise to you: Quality guaranteed and expert technical support

- Replacement or refund for products not performing as stated on the datasheet
- Valid for 12 months from date of delivery
- Response to your inquiry within 24 hours

- We provide support in Chinese, English, French, German, Japanese and Spanish
- Extensive multi-media technical resources to help you
- We investigate all quality concerns to ensure our products perform to the highest standards

If the product does not perform as described on this datasheet, we will offer a refund or replacement. For full details of the Abpromise, please visit <https://www.abcam.cn/abpromise> or contact our technical team.

Terms and conditions

- Guarantee only valid for products bought direct from Abcam or one of our authorized distributors