

PE Anti-MHC class I antibody [34-1-2S] ab95571

1 图像

概述

产品名称	PE Anti-MHC class I抗体[34-1-2S]
描述	PE小鼠单克隆抗体[34-1-2S] to MHC class I
宿主	Mouse
偶联物	PE. Ex: 488nm, Em: 575nm
特异性	ab95571 reacts with the Mouse MHC class I, H-2Kd and H-2Dd. This cytotoxic antibody also cross reacts with K b,s,r,q,p.
经测试应用	适用于: Flow Cyt
种属反应性	与反应: Mouse
免疫原	Tissue, cells or virus corresponding to Mouse MHC class I. C3H.SW Mouse splenocytes
阳性对照	Mouse splenocytes
常规说明	<p>The Life Science industry has been in the grips of a reproducibility crisis for a number of years. Abcam is leading the way in addressing this with our range of recombinant monoclonal antibodies and knockout edited cell lines for gold-standard validation. Please check that this product meets your needs before purchasing.</p> <p>If you have any questions, special requirements or concerns, please send us an inquiry and/or contact our Support team ahead of purchase. Recommended alternatives for this product can be found below, along with publications, customer reviews and Q&As</p>

性能

形式	Liquid
存放说明	Shipped at 4°C. Store at +4°C.
存储溶液	<p>pH: 7.20</p> <p>Preservative: 0.09% Sodium azide</p> <p>Constituents: 0.87% Sodium chloride, PBS</p>
纯度	Protein G purified
克隆	单克隆
克隆编号	34-1-2S
同种型	IgG2a
轻链类型	kappa

应用

The Abpromise guarantee **Abpromise™**承诺保证使用ab95571于以下的经测试应用

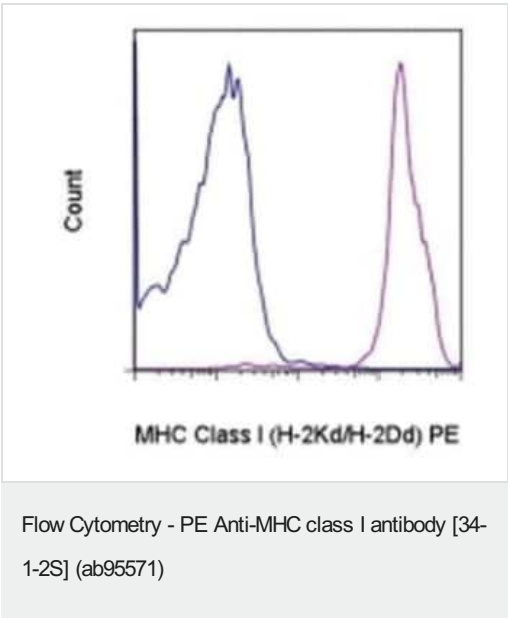
“应用说明”部分 下显示的仅为推荐的起始稀释度;实际最佳的稀释度/浓度应由使用者检定。

应用	Ab评论	说明
Flow Cyt		Use at an assay dependent concentration. Staining the cell sample in a final volume of 100 ÅµL is recommended.

靶标

相关性	MHC Class I molecules play a central role in the immune system by presenting peptides derived from the endoplasmic reticulum lumen. MHC class I antigens are heterodimers consisting of one alpha chain (44kDa) with beta 2 microglobulin (11.5 kDa). The antigen is expressed by all somatic cells at varying levels. MHC Class I molecules are expressed on most nucleated cells where they present endogenously synthesized antigenic peptides to CD8+ T lymphocytes, which are usually cytotoxic T cells. Fibroblasts or neurons however only show a low level of antigen.
细胞定位	Cell Membrane; Type I membrane protein.

图片



Staining of BALB/c splenocytes with 0.125 µg of Mouse IgG2a K Isotype Control PE (blue histogram) or 0.125 µg of ab95571 (purple histogram). Cells in the lymphocyte gate were used for analysis.

Please note: All products are "FOR RESEARCH USE ONLY. NOT FOR USE IN DIAGNOSTIC PROCEDURES"

Our Abpromise to you: Quality guaranteed and expert technical support

- Replacement or refund for products not performing as stated on the datasheet

- Valid for 12 months from date of delivery
- Response to your inquiry within 24 hours
- We provide support in Chinese, English, French, German, Japanese and Spanish
- Extensive multi-media technical resources to help you
- We investigate all quality concerns to ensure our products perform to the highest standards

If the product does not perform as described on this datasheet, we will offer a refund or replacement. For full details of the Abpromise, please visit <https://www.abcam.cn/abpromise> or contact our technical team.

Terms and conditions

- Guarantee only valid for products bought direct from Abcam or one of our authorized distributors