

PE Anti-MHC Class 1 H2 Db/H2-D1 antibody [27-11-13] ab25547

[1 References](#) [1 图像](#)

概述

产品名称	PE Anti-MHC Class 1 H2 Db/H2-D1 抗体[27-11-13]
描述	PE小鼠单克隆抗体[27-11-13] to MHC Class 1 H2 Db/H2-D1
宿主	Mouse
偶联物	PE. Ex: 488nm, Em: 575nm
特异性	ab25547 recognizes the alpha3 domain of H-2Db class I MHC antigen. The antibody cross-reacts with the alpha3 domain of H-2Ld, H-2Dq and H-2Lq, but not H-2Kd or H-2Dd. Reactivity with haplotypes k, f, p, r, and s has not been observed.
经测试应用	适用于: Flow Cyt
种属反应性	与反应: Mouse
免疫原	Tissue, cells or virus corresponding to Mouse MHC Class 1 H2 Db/H2-D1. BDF1 mouse splenocytes
表位	This antibody reacts with an epitope on the alpha chain [alpha3 domain] of H2Db.
阳性对照	Flow cyt: Mouse BALB/c splenocytes.
常规说明	<p>The Life Science industry has been in the grips of a reproducibility crisis for a number of years. Abcam is leading the way in addressing this with our range of recombinant monoclonal antibodies and knockout edited cell lines for gold-standard validation. Please check that this product meets your needs before purchasing.</p> <p>If you have any questions, special requirements or concerns, please send us an inquiry and/or contact our Support team ahead of purchase. Recommended alternatives for this product can be found below, along with publications, customer reviews and Q&As</p>

性能

形式	Liquid
存放说明	Shipped at 4°C. Store at +4°C. Store In the Dark.
存储溶液	pH: 7.3 Preservative: 0.09% Sodium azide Constituents: PBS, 16% Sucrose

Also contains a stabilizing agent.

纯度	Affinity purified
克隆	单克隆
克隆编号	27-11-13
同种型	IgG2a
轻链类型	kappa

应用

The Abpromise guarantee **Abpromise™** 承诺保证使用 ab25547 于以下的经测试应用

“应用说明”部分 下显示的仅为推荐的起始稀释度;实际最佳的稀释度/浓度应由使用者检定。

应用	Ab评论	说明
Flow Cyt		Use 0.2µg for 10 ⁶ cells.

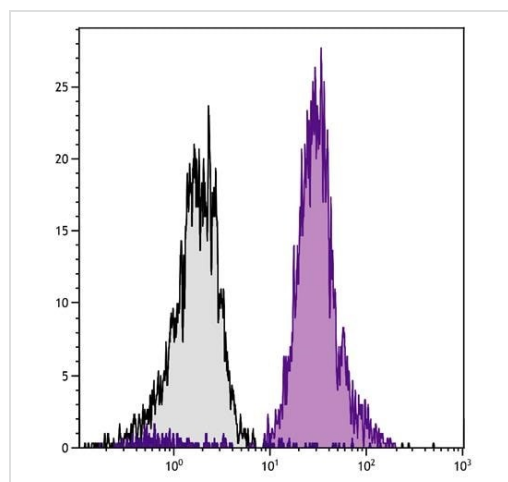
靶标

相关性

In the mouse the MHC Class 1 loci are called H2K, H2L and H2D. The equivalent loci in the human MHC are HLA (Human Leukocyte Antigen). MHC class I molecules are heterodimers, consisting of a single transmembrane polypeptide chain (the α -chain) which is highly polymorphic, and the invariant β_2 microglobulin (which is encoded elsewhere, not in the MHC). MHC class I molecules are found on almost every nucleated cell of the body. Their major function is to present peptide fragments derived from antigens to cytotoxic T cells.

细胞定位 Cell Membrane; single pass type I membrane protein

图片



Flow cytometric analysis of mouse BALB/c mouse splenocytes stained for MHC Class 1 H2 Db/H2-D1 using ab25547 at 0.2 µg/10⁶ cells.

Flow Cytometry - PE Anti-MHC Class 1 H2 Db/H2-D1 antibody [27-11-13] (ab25547)

Please note: All products are "FOR RESEARCH USE ONLY. NOT FOR USE IN DIAGNOSTIC PROCEDURES"

Our Abpromise to you: Quality guaranteed and expert technical support

- Replacement or refund for products not performing as stated on the datasheet
- Valid for 12 months from date of delivery
- Response to your inquiry within 24 hours

- We provide support in Chinese, English, French, German, Japanese and Spanish
- Extensive multi-media technical resources to help you
- We investigate all quality concerns to ensure our products perform to the highest standards

If the product does not perform as described on this datasheet, we will offer a refund or replacement. For full details of the Abpromise, please visit <https://www.abcam.cn/abpromise> or contact our technical team.

Terms and conditions

- Guarantee only valid for products bought direct from Abcam or one of our authorized distributors