

PE Anti-Integrin beta 7 antibody [FIB504] ab95817

1 References **1 图像**

概述

产品名称	PE Anti-Integrin beta 7抗体[FIB504]
描述	PE大鼠单克隆抗体[FIB504] to Integrin beta 7
宿主	Rat
偶联物	PE. Ex: 488nm, Em: 575nm
经测试应用	适用于: Flow Cyt
种属反应性	与反应: Human
免疫原	Tissue, cells or virus corresponding to Mouse Integrin beta 7. TK1 murine t-cell lymphoma Database link: P26010
阳性对照	Normal Human peripheral blood cells
常规说明	1 test = 5 microlitres The Life Science industry has been in the grips of a reproducibility crisis for a number of years. Abcam is leading the way in addressing this with our range of recombinant monoclonal antibodies and knockout edited cell lines for gold-standard validation. Please check that this product meets your needs before purchasing. If you have any questions, special requirements or concerns, please send us an inquiry and/or contact our Support team ahead of purchase. Recommended alternatives for this product can be found below, along with publications, customer reviews and Q&As

性能

形式	Liquid
存放说明	Shipped at 4°C. Store at +4°C.
存储溶液	pH: 7.20 Preservative: 0.09% Sodium azide Constituent: PBS
纯度	Protein G purified
克隆	单克隆
克隆编号	FIB504
同种型	IgG2a
轻链类型	kappa

应用

The Abpromise guarantee

Abpromise™承诺保证使用ab95817于以下的经测试应用

“应用说明”部分 下显示的仅为推荐的起始稀释度;实际最佳的稀释度/浓度应由使用者检定。

应用	Ab评论	说明
Flow Cyt		Use 5µl for 10 ⁶ cells.

靶标

功能

Integrin alpha-4/beta-7 (Peyer patches-specific homing receptor LPAM-1) is an adhesion molecule that mediates lymphocyte migration and homing to gut-associated lymphoid tissue (GALT). Integrin alpha-4/beta-7 interacts with the cell surface adhesion molecules MADCAM1 which is normally expressed by the vascular endothelium of the gastrointestinal tract. Interacts also with VCAM1 and fibronectin, an extracellular matrix component. It recognizes one or more domains within the alternatively spliced CS-1 region of fibronectin. Interactions involves the tripeptide L-D-T in MADCAM1, and L-D-V in fibronectin. Binds to HIV-1 gp120, thereby allowing the virus to enter GALT, which is thought to be the major trigger of AIDS disease. Interaction would involve a tripeptide L-D-I in HIV-1 gp120. Integrin alpha-E/beta-7 (HML-1) is a receptor for E-cadherin.

组织特异性

Expressed in a variety of leukocyte lines.

序列相似性

Belongs to the integrin beta chain family.

Contains 1 VWFA domain.

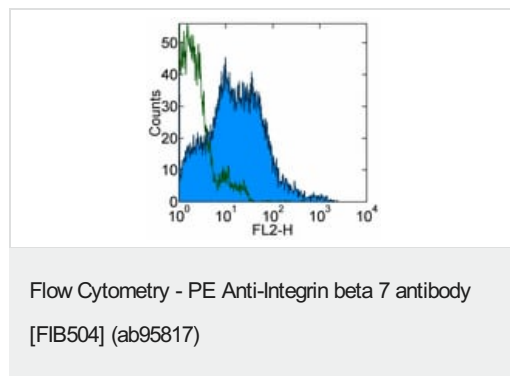
结构域

Domain I contains three cation-binding sites: the ligand-integrin-binding site (LIMBS), the metal ion-dependent adhesion site (MIDAS), and the adjacent to MIDAS site (ADMIDAS). In the absence of a ligand or in calcium-dependent binding, only ADMIDAS is occupied. In magnesium-dependent binding all three sites bind metal ions. LIMBS positively modify ligand binding whereas ADMIDAS negatively modify ligand binding.

细胞定位

Membrane.

图片



Staining of normal Human peripheral blood cells with Rat IgG2a ?
Isotype Control PE (open histogram) or ab95817 (filled histogram).
Cells in the lymphocyte gate were used for analysis.

Please note: All products are "FOR RESEARCH USE ONLY. NOT FOR USE IN DIAGNOSTIC PROCEDURES"

Our Abpromise to you: Quality guaranteed and expert technical support

- Replacement or refund for products not performing as stated on the datasheet
- Valid for 12 months from date of delivery
- Response to your inquiry within 24 hours
- We provide support in Chinese, English, French, German, Japanese and Spanish
- Extensive multi-media technical resources to help you
- We investigate all quality concerns to ensure our products perform to the highest standards

If the product does not perform as described on this datasheet, we will offer a refund or replacement. For full details of the Abpromise, please visit <https://www.abcam.cn/abpromise> or contact our technical team.

Terms and conditions

- Guarantee only valid for products bought direct from Abcam or one of our authorized distributors