


PE Anti-Integrin alpha 6 antibody [GoH3] ab95703

[11 References](#) [2 图像](#)

概述

产品名称	PE Anti-Integrin alpha 6抗体[GoH3]
描述	PE大鼠单克隆抗体[GoH3] to Integrin alpha 6
宿主	Rat
偶联物	PE. Ex: 488nm, Em: 575nm
经测试应用	适用于: Flow Cyt
种属反应性	与反应: Human 预测可用于: Mouse 
免疫原	Tissue, cells or virus corresponding to Mouse Integrin alpha 6. Mouse mammary tumor cells
阳性对照	Normal Human peripheral blood cells/leukocytes
常规说明	

The GoH3 antibody has been reported to have functional activity in blocking the binding of Integrin alpha 6 to laminin.

The Life Science industry has been in the grips of a reproducibility crisis for a number of years. Abcam is leading the way in addressing this with our range of recombinant monoclonal antibodies and knockout edited cell lines for gold-standard validation. Please check that this product meets your needs before purchasing.

If you have any questions, special requirements or concerns, please send us an inquiry and/or contact our Support team ahead of purchase. Recommended alternatives for this product can be found below, along with publications, customer reviews and Q&As

性能

形式	Liquid
存放说明	Shipped at 4°C. Store at +4°C.
存储溶液	pH: 7.20 Preservative: 0.09% Sodium azide
纯度	Protein G purified
Primary antibody说明	The GoH3 antibody has been reported to have functional activity in blocking the binding of Integrin alpha 6 to laminin.
克隆	单克隆

克隆编号	GoH3
同种型	IgG2a
轻链类型	kappa

应用

The Abpromise guarantee **Abpromise™**承诺保证使用ab95703于以下的经测试应用

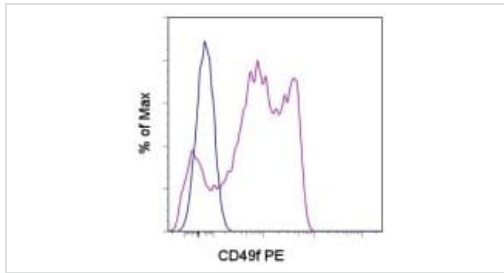
“应用说明”部分 下显示的仅为推荐的起始稀释度;实际最佳的稀释度/浓度应由使用者检定。

应用	Ab评论	说明
Flow Cyt		Use 0.06-0.125µg for 10 ⁵⁻⁸ cells. Staining the cell sample in a final volume of 100 µl is recommended.

靶标

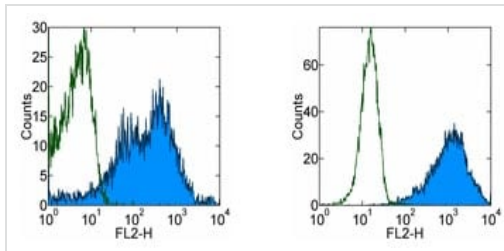
功能	Integrin alpha-6/beta-1 is a receptor for laminin on platelets. Integrin alpha-6/beta-4 is a receptor for laminin in epithelial cells and it plays a critical structural role in the hemidesmosome (By similarity). ITGA6:ITGB4 binds to NRG1 (via EGF domain) and this binding is essential for NRG1-ERBB signaling (PubMed:20682778). ITGA6:ITGB4 binds to IGF1 and this binding is essential for IGF1 signaling (PubMed:22351760).
组织特异性	Integrin alpha-6/beta-4 is predominantly expressed by epithelia. Isoforms containing segment X1 are ubiquitously expressed. Isoforms containing segment X1X2 are expressed in heart, kidney, placenta, colon, duodenum, myoblasts and myotubes, and in a limited number of cell lines; they are always coexpressed with the ubiquitous isoform containing segment X1. In some tissues (e.g. Salivary gland), isoforms containing cytoplasmic segment A and isoforms containing segment B are detected while in others, only isoforms containing one cytoplasmic segment are found (segment A in epidermis and segment B in kidney).
疾病相关	Epidermolysis bullosa letalis, with pyloric atresia
序列相似性	Belongs to the integrin alpha chain family. Contains 7 FG-GAP repeats.
翻译后修饰	Isoforms containing segment A, but not segment B, are the major targets for PMA-induced phosphorylation. Phosphorylation occurs on 'Ser-1103' of isoform alpha-6X1X2A. Phosphorylation is not required for the induction of integrin alpha-6A/beta-1 high affinity but may reduce the affinity for ligand. In invasive prostate cancer ITGA6 undergoes PLAU-mediated cleavage at residues Arg-634-635-Arg in a time-dependent manner enhancing cell invasion and migration in vitro. Palmitoylation by DHHC3 enhances stability and cell surface expression.
细胞定位	Cell membrane. Cell membrane.

图片



Flow Cytometry - PE Anti-Integrin alpha 6 antibody [GoH3] (ab95703)

Flow Cytometry analysis of normal human peripheral blood cells stained with Rat IgG2a kappa Isotype Control Phycoerythrin (blue histogram) or Anti-Integrin alpha 6 antibody [GoH3] (Phycoerythrin) (ab95703) (purple histogram). Cells in the lymphocyte gate were used for analysis.



Flow Cytometry - PE Anti-Integrin alpha 6 antibody [GoH3] (ab95703)

Flow cytometry staining of normal Human peripheral blood cells with 0.06 μg of Rat IgG2a Isotype Control PE (open histogram) or 0.06 μg of ab95703 (filled histogram). Cells in the lymphocyte (left) and granulocyte (right) gates were used for analysis.

Please note: All products are "FOR RESEARCH USE ONLY. NOT FOR USE IN DIAGNOSTIC PROCEDURES"

Our Abpromise to you: Quality guaranteed and expert technical support

- Replacement or refund for products not performing as stated on the datasheet
- Valid for 12 months from date of delivery
- Response to your inquiry within 24 hours
- We provide support in Chinese, English, French, German, Japanese and Spanish
- Extensive multi-media technical resources to help you
- We investigate all quality concerns to ensure our products perform to the highest standards

If the product does not perform as described on this datasheet, we will offer a refund or replacement. For full details of the Abpromise, please visit <https://www.abcam.cn/abpromise> or contact our technical team.

Terms and conditions

- Guarantee only valid for products bought direct from Abcam or one of our authorized distributors