

PE Anti-IL3RA/CD123 antibody [6H6] ab93523

1 图像

概述

产品名称	PE Anti-IL3RA/CD123抗体[6H6]
描述	PE小鼠单克隆抗体[6H6] to IL3RA/CD123
宿主	Mouse
偶联物	PE. Ex: 488nm, Em: 575nm
经测试应用	适用于: Flow Cyt
种属反应性	与反应: Human
免疫原	Tissue, cells or virus corresponding to Human IL3RA/CD123. IL3 receptor alpha chain expressed on the surface of transiently transfected COS cells
阳性对照	Peripheral blood leukocytes
常规说明	<p>The Life Science industry has been in the grips of a reproducibility crisis for a number of years. Abcam is leading the way in addressing this with our range of recombinant monoclonal antibodies and knockout edited cell lines for gold-standard validation. Please check that this product meets your needs before purchasing.</p> <p>If you have any questions, special requirements or concerns, please send us an inquiry and/or contact our Support team ahead of purchase. Recommended alternatives for this product can be found below, along with publications, customer reviews and Q&As</p>

性能

形式	Liquid
存放说明	Shipped at 4°C. Store at +4°C.
存储溶液	<p>pH: 7.20</p> <p>Preservative: 0.09% Sodium azide</p> <p>Constituents: 0.2% BSA, 0.87% Sodium chloride, PBS</p>
纯度	Affinity purified
克隆	单克隆
克隆编号	6H6
同种型	IgG1
轻链类型	kappa

应用

The Abpromise guarantee **Abpromise™** 承诺保证使用 ab93523 于以下的经测试应用

“应用说明”部分 下显示的仅为推荐的起始稀释度; 实际最佳的稀释度/浓度应由使用者检定。

应用	Ab 评论	说明
Flow Cyt		

应用说明

Flow Cyt: Use 0.25 µg for 10^{5-8} cells.

Not yet tested in other applications.

Optimal dilutions/concentrations should be determined by the end user.

靶标

功能

This is a receptor for interleukin-3.

序列相似性

Belongs to the type I cytokine receptor family. Type 5 subfamily.

结构域

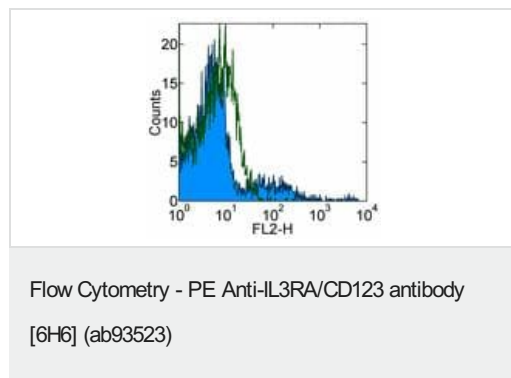
The WSXWS motif appears to be necessary for proper protein folding and thereby efficient intracellular transport and cell-surface receptor binding.

The box 1 motif is required for JAK interaction and/or activation.

细胞定位

Membrane.

图片



Flow Cytometry analysis of IL3RA / CD123 expression in normal Human peripheral blood cells

Open histogram: PE Mouse IgG1, K isotype control

Colored histogram: ab93523

Antibodies were used at 0.125 µg/test.

Cells in the lymphocyte gate were used for analysis.

Please note: All products are "FOR RESEARCH USE ONLY. NOT FOR USE IN DIAGNOSTIC PROCEDURES"

Our Abpromise to you: Quality guaranteed and expert technical support

- Replacement or refund for products not performing as stated on the datasheet
- Valid for 12 months from date of delivery
- Response to your inquiry within 24 hours
- We provide support in Chinese, English, French, German, Japanese and Spanish

- Extensive multi-media technical resources to help you
- We investigate all quality concerns to ensure our products perform to the highest standards

If the product does not perform as described on this datasheet, we will offer a refund or replacement. For full details of the Abpromise, please visit <https://www.abcam.cn/abpromise> or contact our technical team.

Terms and conditions

- Guarantee only valid for products bought direct from Abcam or one of our authorized distributors