

PE Anti-CD8 antibody [LT8] ab28017

[1 References](#) [1 图像](#)

概述

产品名称	PE Anti-CD8抗体[LT8]
描述	PE小鼠单克隆抗体[LT8] to CD8
宿主	Mouse
偶联物	PE. Ex: 488nm, Em: 575nm
经测试应用	适用于: Flow Cyt
种属反应性	与反应: Human, Rhesus monkey
免疫原	Tissue, cells or virus corresponding to Human CD8. Normal human peripheral blood lymphocytes.
常规说明	Purified IgG conjugated to R. Phycoerythrin (RPE).

The Life Science industry has been in the grips of a reproducibility crisis for a number of years. Abcam is leading the way in addressing this with our range of recombinant monoclonal antibodies and knockout edited cell lines for gold-standard validation. Please check that this product meets your needs before purchasing.

If you have any questions, special requirements or concerns, please send us an inquiry and/or contact our Support team ahead of purchase. Recommended alternatives for this product can be found below, along with publications, customer reviews and Q&As

性能

形式	Liquid
存放说明	Shipped at 4°C. Store at +4°C.
存储溶液	pH: 7.40 Preservative: 0.09% Sodium azide Constituents: PBS, 1% BSA
纯度	IgG fraction
纯化说明	Ion exchange chromatography.
克隆	单克隆
克隆编号	LT8
骨髓瘤	x63-Ag8.653
同种型	IgG1

应用

The Abpromise guarantee **Abpromise™**承诺保证使用ab28017于以下的经测试应用

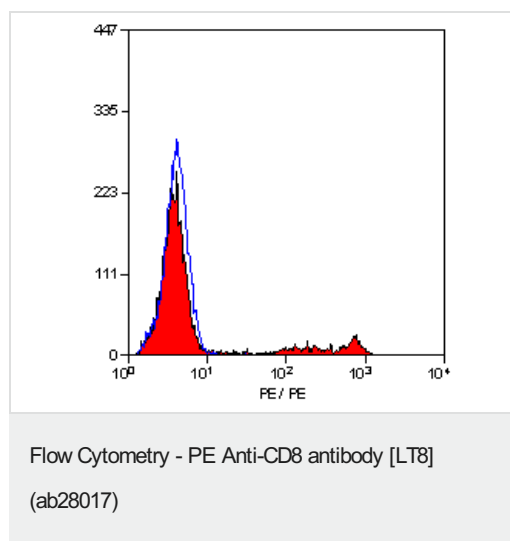
“应用说明”部分 下显示的仅为推荐的起始稀释度;实际最佳的稀释度/浓度应由使用者检定。

应用	Ab评论	说明
Flow Cyt		Use 10µl for 10 ⁶ cells. Or 100µl human whole blood.

靶标

功能	Identifies cytotoxic/suppressor T-cells that interact with MHC class I bearing targets. CD8 is thought to play a role in the process of T-cell mediated killing. CD8 alpha chains binds to class I MHC molecules alpha-3 domains.
疾病相关	Defects in CD8A are a cause of familial CD8 deficiency (CD8 deficiency) [MIM:608957]. Familial CD8 deficiency is a novel autosomal recessive immunologic defect characterized by absence of CD8+ cells, leading to recurrent bacterial infections.
序列相似性	Contains 1 Ig-like V-type (immunoglobulin-like) domain.
翻译后修饰	All of the five most C-terminal cysteines form inter-chain disulfide bonds in dimers and higher multimers, while the four N-terminal cysteines do not.
细胞定位	Secreted and Cell membrane.
形式	CD8 beta tissue specificity: Isoform 1, isoform 3, isoform 5, isoform 6, isoform 7 and isoform 8 are expressed in both thymus and peripheral CD8+ T-cells. Expression of isoform 1 is higher in thymus CD8+ T-cells than in peripheral CD8+ T-cells. Expression of isoform 6 is higher in peripheral CD8+ T-cells than in thymus CD8+ T-cells. CD8 beta PTM: Phosphorylated as a consequence of T-cell activation.

图片



Staining of human peripheral blood lymphocytes with mouse anti human CD8:RPE (ab28017).

Please note: All products are "FOR RESEARCH USE ONLY. NOT FOR USE IN DIAGNOSTIC PROCEDURES"

Our Abpromise to you: Quality guaranteed and expert technical support

- Replacement or refund for products not performing as stated on the datasheet
- Valid for 12 months from date of delivery
- Response to your inquiry within 24 hours

- We provide support in Chinese, English, French, German, Japanese and Spanish
- Extensive multi-media technical resources to help you
- We investigate all quality concerns to ensure our products perform to the highest standards

If the product does not perform as described on this datasheet, we will offer a refund or replacement. For full details of the Abpromise, please visit <https://www.abcam.cn/abpromise> or contact our technical team.

Terms and conditions

- Guarantee only valid for products bought direct from Abcam or one of our authorized distributors