

PE Anti-CD59 antibody [MEM-43] ab36421

[1 References](#) [2 图像](#)

概述

产品名称	PE Anti-CD59抗体[MEM-43]
描述	PE小鼠单克隆抗体[MEM-43] to CD59
宿主	Mouse
偶联物	PE. Ex: 488nm, Em: 575nm
经测试应用	适用于: Flow Cyt, ICC/IF
种属反应性	与反应: Human
免疫原	Tissue, cells or virus corresponding to Human CD59. Thymocytes and T lymphocytes
表位	ab36421 reacts with the well defined epitope (W40, R-53) on the CD59 molecule.
阳性对照	This antibody gave a positive result in IF in the following Formaldehyde fixed cell line: JEG3.
常规说明	<p>The Life Science industry has been in the grips of a reproducibility crisis for a number of years. Abcam is leading the way in addressing this with our range of recombinant monoclonal antibodies and knockout edited cell lines for gold-standard validation. Please check that this product meets your needs before purchasing.</p> <p>If you have any questions, special requirements or concerns, please send us an inquiry and/or contact our Support team ahead of purchase. Recommended alternatives for this product can be found below, along with publications, customer reviews and Q&As</p>

性能

形式	Liquid
存放说明	Shipped at 4°C. Store at +4°C.
存储溶液	<p>pH: 7.4</p> <p>Preservative: 0.097% Sodium azide</p> <p>Constituents: 0.2% BSA, PBS</p>
纯化说明	The conjugate is purified by size-exclusion chromatography.
克隆	单克隆
克隆编号	MEM-43
同种型	IgG2a

应用

The Abpromise guarantee **Abpromise™**承诺保证使用ab36421于以下的经测试应用

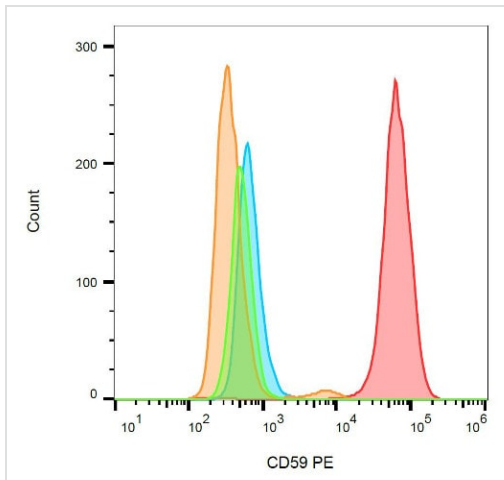
“应用说明”部分 下显示的仅为推荐的起始稀释度;实际最佳的稀释度/浓度应由使用者检定。

应用	Ab评论	说明
Flow Cyt		Use 20µl for 10 ⁶ cells. (or 100µl of whole blood).
ICC/IF		1/100.

靶标

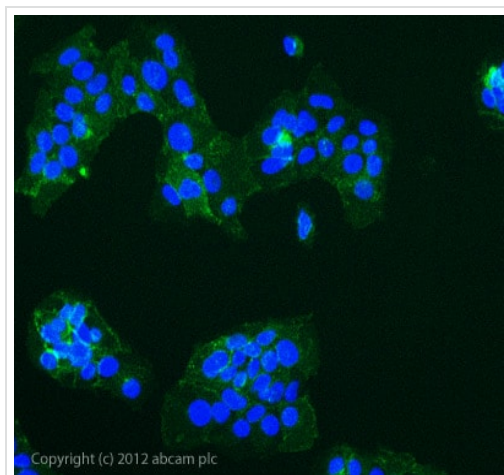
功能	<p>Potent inhibitor of the complement membrane attack complex (MAC) action. Acts by binding to the C8 and/or C9 complements of the assembling MAC, thereby preventing incorporation of the multiple copies of C9 required for complete formation of the osmolytic pore. This inhibitor appears to be species-specific. Involved in signal transduction for T-cell activation complexed to a protein tyrosine kinase.</p> <p>The soluble form from urine retains its specific complement binding activity, but exhibits greatly reduced ability to inhibit MAC assembly on cell membranes.</p>
疾病相关	<p>Defects in CD59 are the cause of CD59 deficiency (CD59D) [MIM:612300].</p>
序列相似性	<p>Contains 1 UPAR/Ly6 domain.</p>
翻译后修饰	<p>N- and O-glycosylated. The N-glycosylation mainly consists of a family of biantennary complex-type structures with and without lactosamine extensions and outer arm fucose residues. Also significant amounts of triantennary complexes (22%). Variable sialylation also present in the Asn-43 oligosaccharide. The predominant O-glycans are mono-sialylated forms of the disaccharide, Gal-beta-1,3GalNAc, and their sites of attachment are probably on Thr-76 and Thr-77. The GPI-anchor of soluble urinary CD59 has no inositol-associated phospholipid, but is composed of seven different GPI-anchor variants of one or more monosaccharide units. Major variants contain sialic acid, mannose and glucosamine Sialic acid linked to an N-acetylhexosamine-galactose arm is present in two variants.</p> <p>Glycated. Glycation is found in diabetic subjects, but only at minimal levels in nondiabetic subjects. Glycated CD59 lacks MAC-inhibitory function and confers to vascular complications of diabetes.</p>
细胞定位	<p>Cell membrane. Secreted. Soluble form found in a number of tissues.</p>

图片



Flow Cytometry - PE Anti-CD59 antibody [MEM-43]
(ab36421)

Flow Cytometry analysis of HL-60 (positive) and SP2 (negative) cells labeling CD59 with Anti-CD59 antibody [MEM-43] (Phycoerythrin) (ab36421).



Immunocytochemistry/ Immunofluorescence - PE
Anti-CD59 antibody [MEM-43] (ab36421)

ab36421 stained JEG3 cells. The cells were 4% formaldehyde fixed (10 min) and then incubated in 1%BSA / 10% normal goat serum / 0.3M glycine in 0.1% PBS-Tween for 1h to permeabilise the cells and block non-specific protein-protein interactions. The cells were then incubated with the antibody ab36421 at 1 in 100 dilution overnight at +4°C. The secondary antibody (green) was DyLight® 488 goat anti- mouse (**ab96879**) IgG (H+L) used at a 1/1000 dilution for 1h. DAPI was used to stain the cell nuclei (blue) at a concentration of 1.43µM.

Please note: All products are "FOR RESEARCH USE ONLY. NOT FOR USE IN DIAGNOSTIC PROCEDURES"

Our Promise to you: Quality guaranteed and expert technical support

- Replacement or refund for products not performing as stated on the datasheet
- Valid for 12 months from date of delivery
- Response to your inquiry within 24 hours
- We provide support in Chinese, English, French, German, Japanese and Spanish
- Extensive multi-media technical resources to help you
- We investigate all quality concerns to ensure our products perform to the highest standards

If the product does not perform as described on this datasheet, we will offer a refund or replacement. For full details of the Abpromise, please visit <https://www.abcam.cn/abpromise> or contact our technical team.

Terms and conditions

- Guarantee only valid for products bought direct from Abcam or one of our authorized distributors