

PE Anti-CD42b antibody [HIP1] ab90951

[2 References](#) [2 图像](#)

概述

产品名称	PE Anti-CD42b抗体[HIP1]
描述	PE小鼠单克隆抗体[HIP1] to CD42b
宿主	Mouse
偶联物	PE. Ex: 488nm, Em: 575nm
经测试应用	适用于: Flow Cyt
种属反应性	与反应: Human
免疫原	Human peripheral blood mononuclear cells of a patient suffering with CLL.
阳性对照	Human peripheral blood platelets.
常规说明	<p>Clone HIP1 antibody inhibits the ristocetin-dependent binding of von Willebrand Factor (vWF) to platelets, ristocetin-induced platelet agglutination and partially inhibits collagen induced aggregation.</p> <p>The Life Science industry has been in the grips of a reproducibility crisis for a number of years. Abcam is leading the way in addressing this with our range of recombinant monoclonal antibodies and knockout edited cell lines for gold-standard validation. Please check that this product meets your needs before purchasing.</p> <p>If you have any questions, special requirements or concerns, please send us an inquiry and/or contact our Support team ahead of purchase. Recommended alternatives for this product can be found below, along with publications, customer reviews and Q&As</p>

性能

形式	Liquid
存放说明	Shipped at 4°C. Store at +4°C.
存储溶液	<p>pH: 7.20</p> <p>Preservative: 0.09% Sodium azide</p> <p>Constituent: 1% BSA</p>
纯度	Immunogen affinity purified
Primary antibody说明	Clone HIP1 antibody inhibits the ristocetin-dependent binding of von Willebrand Factor (vWF) to platelets, ristocetin-induced platelet agglutination and partially inhibits collagen induced aggregation.

克隆	单克隆
克隆编号	H1P1
同种型	IgG1

应用

The Abpromise guarantee **Abpromise™**承诺保证使用ab90951于以下的经测试应用

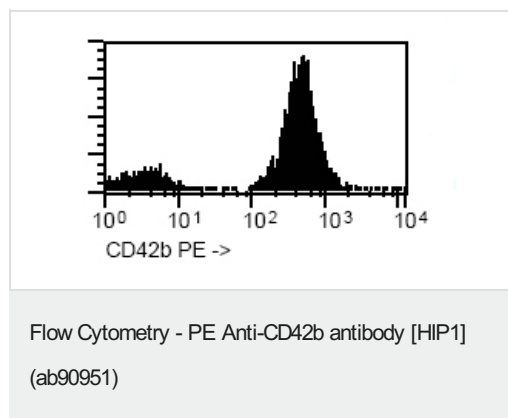
“应用说明”部分 下显示的仅为推荐的起始稀释度;实际最佳的稀释度/浓度应由使用者检定。

应用	Ab评论	说明
Flow Cyt		Use 20µl for 10 ⁶ cells. ab91357 - Mouse monoclonal IgG1, is suitable for use as an isotype control with this antibody.

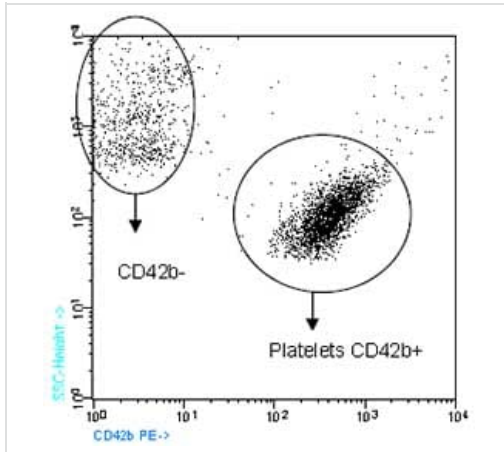
靶标

功能	GP-Ib, a surface membrane protein of platelets, participates in the formation of platelet plugs by binding to the A1 domain of vWF, which is already bound to the subendothelium.
疾病相关	Non-arteritic anterior ischemic optic neuropathy Bernard-Soulier syndrome Bernard-Soulier syndrome A2, autosomal dominant Pseudo-von Willebrand disease
序列相似性	Contains 7 LRR (leucine-rich) repeats. Contains 1 LRRCT domain. Contains 1 LRRNT domain.
翻译后修饰	Glycocalicin, which is approximately coextensive with the extracellular part of the molecule, is cleaved off by calpain during platelet lysis.
细胞定位	Membrane.

图片



ab90951, at 20µl/10⁶ cells, staining CD42b in Human platelets from normal peripheral blood by Flow Cytometry.



Flow Cytometry - PE Anti-CD42b antibody [HIP1]
(ab90951)

ab90951, at 20µl/10⁶ cells, staining CD42b in Human Platelets from normal peripheral blood by Flow Cytometry.

Please note: All products are "FOR RESEARCH USE ONLY. NOT FOR USE IN DIAGNOSTIC PROCEDURES"

Our Abpromise to you: Quality guaranteed and expert technical support

- Replacement or refund for products not performing as stated on the datasheet
- Valid for 12 months from date of delivery
- Response to your inquiry within 24 hours
- We provide support in Chinese, English, French, German, Japanese and Spanish
- Extensive multi-media technical resources to help you
- We investigate all quality concerns to ensure our products perform to the highest standards

If the product does not perform as described on this datasheet, we will offer a refund or replacement. For full details of the Abpromise, please visit <https://www.abcam.cn/abpromise> or contact our technical team.

Terms and conditions

- Guarantee only valid for products bought direct from Abcam or one of our authorized distributors