

### PE Anti-CD38 antibody [GR7A4] ab90945

#### 1 图像

#### 概述

---

产品名称	PE Anti-CD38抗体[GR7A4]
描述	PE小鼠单克隆抗体[GR7A4] to CD38
宿主	Mouse
偶联物	PE. Ex: 488nm, Em: 575nm
经测试应用	适用于: Flow Cyt
种属反应性	与反应: Human
免疫原	Synthetic peptide (Human)
阳性对照	Peripheral blood leucocytes.
常规说明	<p>The Life Science industry has been in the grips of a reproducibility crisis for a number of years. Abcam is leading the way in addressing this with our range of recombinant monoclonal antibodies and knockout edited cell lines for gold-standard validation. Please check that this product meets your needs before purchasing.</p> <p>If you have any questions, special requirements or concerns, please send us an inquiry and/or contact our Support team ahead of purchase. Recommended alternatives for this product can be found below, along with publications, customer reviews and Q&amp;As</p>

#### 性能

---

形式	Liquid
存放说明	Shipped at 4°C. Store at +4°C.
存储溶液	pH: 7.20 Preservative: 0.09% Sodium azide Constituent: 1% BSA
纯度	Immunogen affinity purified
克隆	单克隆
克隆编号	GR7A4
同种型	IgG1
轻链类型	kappa

## 应用

**The Abpromise guarantee**      **Abpromise™**承诺保证使用ab90945于以下的经测试应用

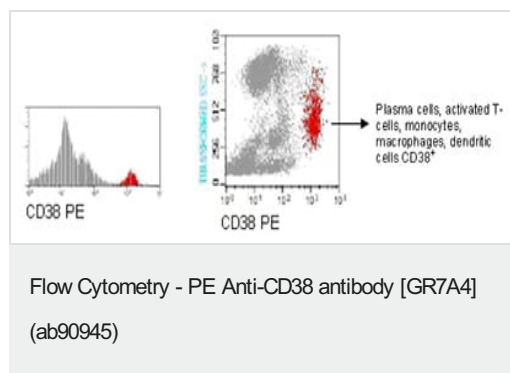
“应用说明”部分 下显示的仅为推荐的起始稀释度;实际最佳的稀释度/浓度应由使用者检定。

应用	Ab评论	说明
Flow Cyt		Use 20µl for 10 <sup>6</sup> cells.

## 靶标

<b>功能</b>	Synthesizes cyclic ADP-ribose, a second messenger for glucose-induced insulin secretion. Also has cADPr hydrolase activity. Also moonlights as a receptor in cells of the immune system.
<b>组织特异性</b>	Expressed at high levels in pancreas, liver, kidney, brain, testis, ovary, placenta, malignant lymphoma and neuroblastoma.
<b>序列相似性</b>	Belongs to the ADP-ribosyl cyclase family.
<b>发展阶段</b>	Preferentially expressed at both early and late stages of the B and T-cell maturation. It is also detected on erythroid and myeloid progenitors in bone marrow, where the level of surface expression was shown to decrease during differentiation of blast-forming unit E to colony-forming unit E.
<b>细胞定位</b>	Membrane.
<b>形式</b>	There are 2 isoforms produced by alternative splicing.

## 图片



Flow cytometry analysis of CD38 in peripheral blood leucocytes using ab90945 at 20 µl/10<sup>6</sup> cells. CD38+ cells (plasma cells, activated T cells, monocytes, macrophages, dendritic cells) are represented in red.

**Please note:** All products are "FOR RESEARCH USE ONLY. NOT FOR USE IN DIAGNOSTIC PROCEDURES"

## Our Abpromise to you: Quality guaranteed and expert technical support

- Replacement or refund for products not performing as stated on the datasheet
- Valid for 12 months from date of delivery
- Response to your inquiry within 24 hours
- We provide support in Chinese, English, French, German, Japanese and Spanish
- Extensive multi-media technical resources to help you

- We investigate all quality concerns to ensure our products perform to the highest standards

If the product does not perform as described on this datasheet, we will offer a refund or replacement. For full details of the Abpromise, please visit <https://www.abcam.cn/abpromise> or contact our technical team.

### **Terms and conditions**

---

- Guarantee only valid for products bought direct from Abcam or one of our authorized distributors