

### PE Anti-CD34 antibody [4H11(APG)], prediluted ab18228

★★★★★ [1 Abreviews](#) [2 References](#) [1 图像](#)

#### 概述

<b>产品名称</b>	PE Anti-CD34抗体[4H11(APG)], prediluted
<b>描述</b>	PE小鼠单克隆抗体[4H11(APG)] to CD34, prediluted
<b>宿主</b>	Mouse
<b>偶联物</b>	PE. Ex: 488nm, Em: 575nm
<b>特异性</b>	The antibody reacts with Class III epitope on CD34 antibody. It completely blocks binding of Class II antibody QBEnd10 and Class III antibodies BIRMA K3 and 8G12 on KG1a cell line
<b>经测试应用</b>	<b>适用于:</b> Flow Cyt
<b>种属反应性</b>	<b>与反应:</b> Human
<b>免疫原</b>	Tissue, cells or virus corresponding to Human CD34. Permanent human cell line derived from peripheral leucocytes of a patient suffering from chronic myeloid leukaemia
<b>阳性对照</b>	CML cell line MOLM-7.
<b>常规说明</b>	<p>The Life Science industry has been in the grips of a reproducibility crisis for a number of years. Abcam is leading the way in addressing this with our range of recombinant monoclonal antibodies and knockout edited cell lines for gold-standard validation. Please check that this product meets your needs before purchasing.</p> <p>If you have any questions, special requirements or concerns, please send us an inquiry and/or contact our Support team ahead of purchase. Recommended alternatives for this product can be found below, along with publications, customer reviews and Q&amp;As</p>

#### 性能

<b>形式</b>	Liquid
<b>存放说明</b>	Shipped at 4°C. Store at +4°C.
<b>存储溶液</b>	pH: 7.40 Preservative: 0.097% Sodium azide Constituents: PBS, BSA
<b>纯度</b>	Protein G purified
<b>纯化说明</b>	Conjugate purified by size-exclusion chromatography.
<b>克隆</b>	单克隆
<b>克隆编号</b>	4H11(APG)

同种型

IgG1

## 应用

**The Abpromise guarantee**      **Abpromise™** 承诺保证使用 ab18228 于以下的经测试应用

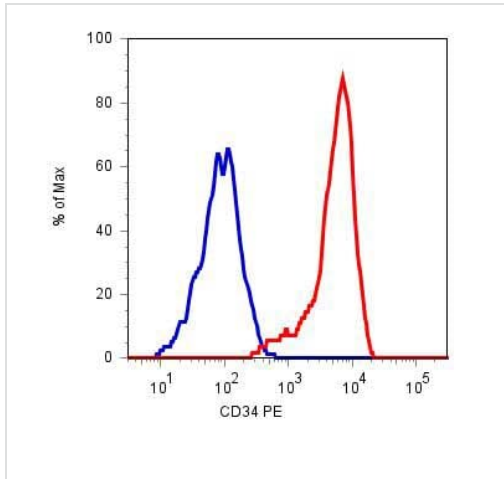
“应用说明”部分 下显示的仅为推荐的起始稀释度;实际最佳的稀释度/浓度应由使用者检定。

应用	Ab评论	说明
Flow Cyt	★★★★☆ (1)	Use 20µl for 10 <sup>6</sup> cells. A cell suspension volume of 100 µl is recommended.  ab01257 Mouse monoclonal IgG1 is suitable for use as an

## 靶标

功能	Possible adhesion molecule with a role in early hematopoiesis by mediating the attachment of stem cells to the bone marrow extracellular matrix or directly to stromal cells. Could act as a scaffold for the attachment of lineage specific glycans, allowing stem cells to bind to lectins expressed by stromal cells or other marrow components. Presents carbohydrate ligands to selectins.
组织特异性	Selectively expressed on hematopoietic progenitor cells and the small vessel endothelium of a variety of tissues.
序列相似性	Belongs to the CD34 family.
发展阶段	On early hematopoietic progenitor cells.
翻译后修饰	Highly glycosylated. Phosphorylated on serine residues by PKC.
细胞定位	Membrane.

## 图片



ab18228 staining CD34 in KG-1a cell line by Flow Cytometry. Blue peak represents negative control while red peak shows signal with ab18228.

Flow Cytometry - PE Anti-CD34 antibody [4H11(APG)], prediluted (ab18228)

**Please note:** All products are "FOR RESEARCH USE ONLY. NOT FOR USE IN DIAGNOSTIC PROCEDURES"

### Our Abpromise to you: Quality guaranteed and expert technical support

- Replacement or refund for products not performing as stated on the datasheet
- Valid for 12 months from date of delivery
- Response to your inquiry within 24 hours
- We provide support in Chinese, English, French, German, Japanese and Spanish
- Extensive multi-media technical resources to help you
- We investigate all quality concerns to ensure our products perform to the highest standards

If the product does not perform as described on this datasheet, we will offer a refund or replacement. For full details of the Abpromise, please visit <https://www.abcam.cn/abpromise> or contact our technical team.

### Terms and conditions

- Guarantee only valid for products bought direct from Abcam or one of our authorized distributors