

PE Anti-CD300a antibody [MEM-260], prediluted ab64675

1 图像

概述

产品名称	PE Anti-CD300a抗体[MEM-260], prediluted
描述	PE小鼠单克隆抗体[MEM-260] to CD300a, prediluted
宿主	Mouse
偶联物	PE. Ex: 488nm, Em: 575nm
经测试应用	适用于: Flow Cyt
种属反应性	与反应: Human
免疫原	Tissue, cells or virus corresponding to Human CD300a. HPB human acute lymphoid leukemia cell line

常规说明

The Life Science industry has been in the grips of a reproducibility crisis for a number of years. Abcam is leading the way in addressing this with our range of recombinant monoclonal antibodies and knockout edited cell lines for gold-standard validation. Please check that this product meets your needs before purchasing.

If you have any questions, special requirements or concerns, please send us an inquiry and/or contact our Support team ahead of purchase. Recommended alternatives for this product can be found below, along with publications, customer reviews and Q&As

性能

形式	Liquid
存放说明	Shipped at 4°C. Store at +4°C.
存储溶液	pH: 7.4 Preservative: 0.097% Sodium azide Constituents: PBS, 0.2% BSA
纯度	Size exclusion
纯化说明	The purified antibody (>95% by SDS-PAGE) is conjugated with R-Phycoerythrin (PE) under optimum conditions. The conjugate is purified by size-exclusion chromatography and adjusted for direct use.
克隆	单克隆
克隆编号	MEM-260
同种型	IgG1

应用

The Abpromise guarantee **Abpromise™**承诺保证使用ab64675于以下的经测试应用

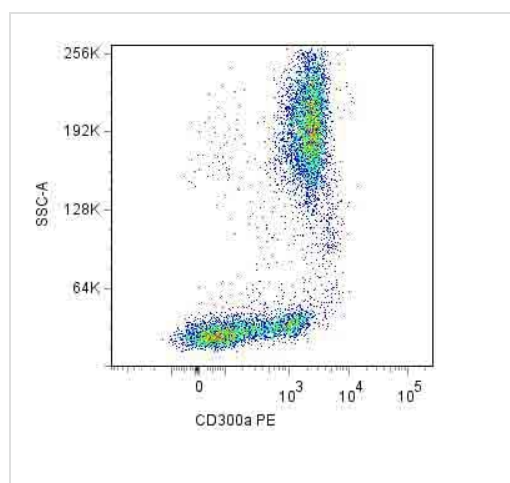
“应用说明”部分 下显示的仅为推荐的起始稀释度;实际最佳的稀释度/浓度应由使用者检定。

应用	Ab评论	说明
Flow Cyt		Use 20µl for 10 ⁶ cells. (or 100µl of whole blood). ab01357 Mouse monoclonal IgG1 is suitable for use as an

靶标

功能	Inhibitory receptor which may contribute to the down-regulation of cytolytic activity in natural killer (NK) cells, and to the down-regulation of mast cell degranulation.
组织特异性	Expressed not only by natural killer (NK) cells but also by T-cell subsets, B-cells, dendritic cells, mast cells, granulocytes and monocytes.
序列相似性	Belongs to the CD300 family. Contains 1 Ig-like V-type (immunoglobulin-like) domain.
翻译后修饰	Phosphorylated on tyrosine.
细胞定位	Cell membrane.

图片



ab64675 at 20ul/100ul sample staining CD300a in human peripheral blood cells by Flow Cytometry.

Flow Cytometry - PE Anti-CD300a antibody [MEM-260], prediluted (ab64675)

Please note: All products are "FOR RESEARCH USE ONLY. NOT FOR USE IN DIAGNOSTIC PROCEDURES"

Our Abpromise to you: Quality guaranteed and expert technical support

- Replacement or refund for products not performing as stated on the datasheet
- Valid for 12 months from date of delivery
- Response to your inquiry within 24 hours

- We provide support in Chinese, English, French, German, Japanese and Spanish
- Extensive multi-media technical resources to help you
- We investigate all quality concerns to ensure our products perform to the highest standards

If the product does not perform as described on this datasheet, we will offer a refund or replacement. For full details of the Abpromise, please visit <https://www.abcam.cn/abpromise> or contact our technical team.

Terms and conditions

- Guarantee only valid for products bought direct from Abcam or one of our authorized distributors