

PE Anti-CD3 antibody [KT3] ab22268

★★★★★ [8 Abreviews](#) [2 References](#) [3 图像](#)

概述

产品名称	PE Anti-CD3抗体[KT3]
描述	PE大鼠单克隆抗体[KT3] to CD3
宿主	Rat
偶联物	PE. Ex: 488nm, Em: 575nm
特异性	This antibody recognises the mouse CD3 antigen which is expressed by mature T cells.
经测试应用	适用于: Flow Cyt
种属反应性	与反应: Mouse
免疫原	Full length native protein (purified) corresponding to Mouse CD3.
阳性对照	Flow Cyt: Mouse spleen, Canine blood leucocytes, Human PBMC
常规说明	<p>Purified IgG conjugated to R. Phycoerythrin (RPE).</p> <p>The Life Science industry has been in the grips of a reproducibility crisis for a number of years. Abcam is leading the way in addressing this with our range of recombinant monoclonal antibodies and knockout edited cell lines for gold-standard validation. Please check that this product meets your needs before purchasing.</p> <p>If you have any questions, special requirements or concerns, please send us an inquiry and/or contact our Support team ahead of purchase. Recommended alternatives for this product can be found below, along with publications, customer reviews and Q&As</p>

性能

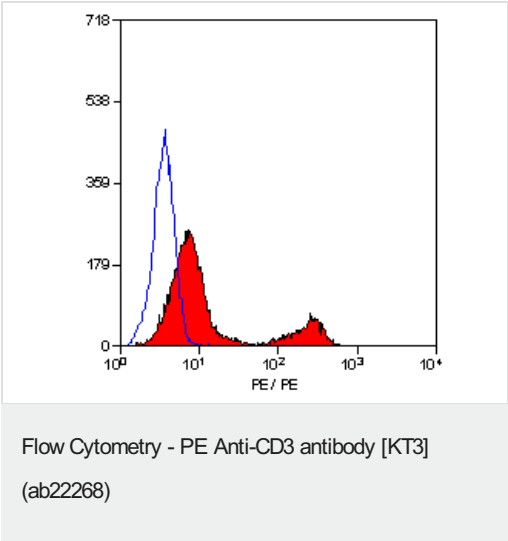
形式	Liquid
存放说明	Shipped at 4°C. Store at +4°C.
存储溶液	Preservative: 0.09% Sodium azide Constituents: PBS, 1% BSA, 5% Sucrose
纯度	Protein A purified
克隆	单克隆
克隆编号	KT3
骨髓瘤	NS0
同种型	IgG2a

The Abpromise guarantee

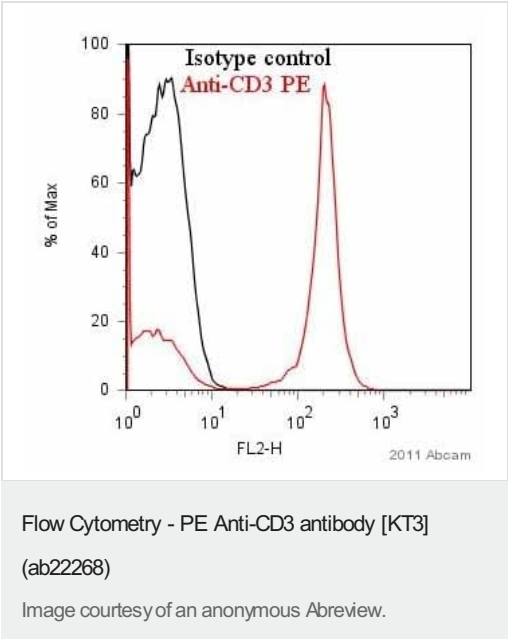
Abpromise™承诺保证使用ab22268于以下的经测试应用

“应用说明”部分 下显示的仅为推荐的起始稀释度;实际最佳的稀释度/浓度应由使用者检定。

应用	Ab评论	说明
Flow Cyt	★★★★☆ (7)	Use 10µl for 10 ⁶ cells. ab134674 - Rat monoclonal IgG2a, is suitable for use as an isotype control with this antibody.

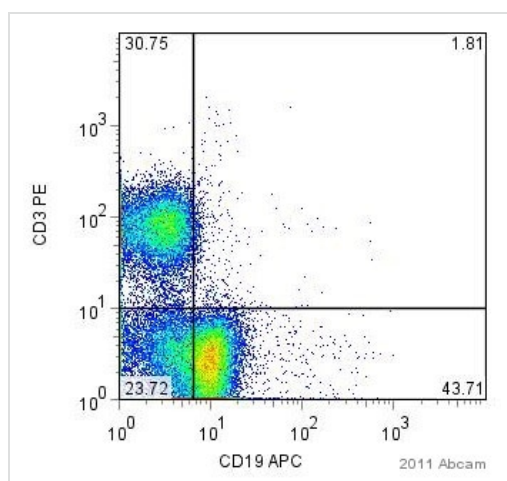


ab22268 staining CD3 in mouse spleen cells by Flow Cytometry analysis.



ab22268 used in Flow Cytometry.
Canine blood leucocytes were harvested in PBS, 2% BSA, 0.01% sodium azide after red blood cell lysis, then fixed with paraformaldehyde. ab22268 used at a 1/100 dilution for 1 hour at 4°C.

The gating strategy used was for lymphocytes.



Flow Cytometry - PE Anti-CD3 antibody [KT3]

(ab22268)

This image is courtesy of an anonymous Abreview

Flow cytometry analysis of human peripheral blood mononuclear cells (PBMC) labelling CD3 with ab22268 at a dilution of (1/100 in PBS + 0.5% BSA) for 1 hour at 4°C. Cell separation was achieved by FICOLL medium with PBS + 0.5% BSA.

Gating Strategy: Lymphocytes

Please note: All products are "FOR RESEARCH USE ONLY. NOT FOR USE IN DIAGNOSTIC PROCEDURES"

Our Abpromise to you: Quality guaranteed and expert technical support

- Replacement or refund for products not performing as stated on the datasheet
- Valid for 12 months from date of delivery
- Response to your inquiry within 24 hours
- We provide support in Chinese, English, French, German, Japanese and Spanish
- Extensive multi-media technical resources to help you
- We investigate all quality concerns to ensure our products perform to the highest standards

If the product does not perform as described on this datasheet, we will offer a refund or replacement. For full details of the Abpromise, please visit <https://www.abcam.cn/abpromise> or contact our technical team.

Terms and conditions

- Guarantee only valid for products bought direct from Abcam or one of our authorized distributors