

PE Anti-CD19 antibody [MB19-1] ab93562

1 图像

概述

产品名称	PE Anti-CD19抗体[MB19-1]
描述	PE小鼠单克隆抗体[MB19-1] to CD19
宿主	Mouse
偶联物	PE. Ex: 488nm, Em: 575nm
经测试应用	适用于: Flow Cyt
种属反应性	与反应: Mouse
免疫原	Tissue, cells or virus corresponding to Mouse CD19. CD19+ Mouse pre-B cell line, 300.19
阳性对照	BALB/c splenocytes and Mouse splenocytes
常规说明	<p>The Life Science industry has been in the grips of a reproducibility crisis for a number of years. Abcam is leading the way in addressing this with our range of recombinant monoclonal antibodies and knockout edited cell lines for gold-standard validation. Please check that this product meets your needs before purchasing.</p> <p>If you have any questions, special requirements or concerns, please send us an inquiry and/or contact our Support team ahead of purchase. Recommended alternatives for this product can be found below, along with publications, customer reviews and Q&As</p>

性能

形式	Liquid
存放说明	Shipped at 4°C. Store at +4°C.
存储溶液	<p>pH: 7.20</p> <p>Preservative: 0.09% Sodium azide</p> <p>Constituents: 2.9% Sodium chloride, PBS</p>
纯度	Protein G purified
克隆	单克隆
克隆编号	MB19-1
同种型	IgA
轻链类型	kappa

应用

The Abpromise guarantee **Abpromise™** 承诺保证使用 ab93562 于以下的经测试应用

“应用说明”部分 下显示的仅为推荐的起始稀释度; 实际最佳的稀释度/浓度应由使用者检定。

应用	Ab 评论	说明
Flow Cyt		

应用说明

Flow Cyt: Use 0.5 µg for 10^5 to 10^8 cells in a final volume of 100 µl.

Not yet tested in other applications.

Optimal dilutions/concentrations should be determined by the end user.

靶标

功能

Assembles with the antigen receptor of B lymphocytes in order to decrease the threshold for antigen receptor-dependent stimulation.

疾病相关

Defects in CD19 are the cause of immunodeficiency common variable type 3 (CVID3) [MIM:613493]; also called antibody deficiency due to CD19 defect. CVID3 is a primary immunodeficiency characterized by antibody deficiency, hypogammaglobulinemia, recurrent bacterial infections and an inability to mount an antibody response to antigen. The defect results from a failure of B-cell differentiation and impaired secretion of immunoglobulins; the numbers of circulating B cells is usually in the normal range, but can be low.

序列相似性

Contains 2 Ig-like C2-type (immunoglobulin-like) domains.

翻译后修饰

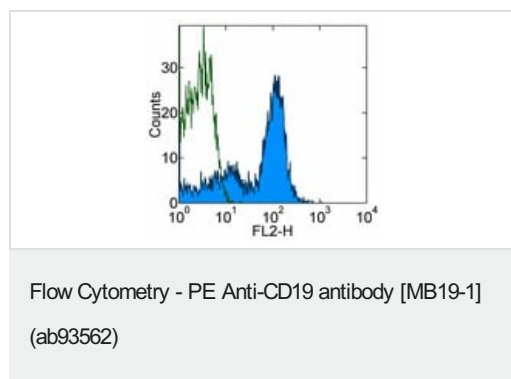
Phosphorylated on serine and threonine upon DNA damage, probably by ATM or ATR.

Phosphorylated on tyrosine following B-cell activation.

细胞定位

Membrane.

图片



Staining of BALB/c splenocytes with staining buffer (autofluorescence) (open histogram) or ab93562 (colored histogram). Cells in the lymphocyte gate were used for analysis.

Please note: All products are "FOR RESEARCH USE ONLY. NOT FOR USE IN DIAGNOSTIC PROCEDURES"

Our Abpromise to you: Quality guaranteed and expert technical support

- Replacement or refund for products not performing as stated on the datasheet

- Valid for 12 months from date of delivery
- Response to your inquiry within 24 hours
- We provide support in Chinese, English, French, German, Japanese and Spanish
- Extensive multi-media technical resources to help you
- We investigate all quality concerns to ensure our products perform to the highest standards

If the product does not perform as described on this datasheet, we will offer a refund or replacement. For full details of the Abpromise, please visit <https://www.abcam.cn/abpromise> or contact our technical team.

Terms and conditions

- Guarantee only valid for products bought direct from Abcam or one of our authorized distributors