

### PE Anti-CD18 antibody [MEM-48] ab49921

[1 References](#) [1 图像](#)

#### 概述

产品名称	PE Anti-CD18抗体[MEM-48]
描述	PE小鼠单克隆抗体[MEM-48] to CD18
宿主	Mouse
偶联物	PE. Ex: 488nm, Em: 575nm
经测试应用	适用于: Flow Cyt
种属反应性	与反应: Human
免疫原	Tissue, cells or virus corresponding to Human CD18. Leucocytes of a patient suffering from a LGL-type leukaemia
表位	ab49921 recognizes an epitope involving residues 534-546 in cysteine-rich repeat 3 of the CD18 antigen (integrin b2 subunit; b2 integrin).
阳性对照	Human whole blood.
常规说明	<p>The Life Science industry has been in the grips of a reproducibility crisis for a number of years. Abcam is leading the way in addressing this with our range of recombinant monoclonal antibodies and knockout edited cell lines for gold-standard validation. Please check that this product meets your needs before purchasing.</p> <p>If you have any questions, special requirements or concerns, please send us an inquiry and/or contact our Support team ahead of purchase. Recommended alternatives for this product can be found below, along with publications, customer reviews and Q&amp;As</p>

#### 性能

形式	Liquid
存放说明	Shipped at 4°C. Store at +4°C.
存储溶液	pH: 7.4 Preservative: 0.097% Sodium azide Constituents: PBS, 0.2% BSA
纯度	Size exclusion
克隆	单克隆
克隆编号	MEM-48
同种型	IgG1

## 应用

**The Abpromise guarantee**      **Abpromise™** 承诺保证使用 ab49921 于以下的经测试应用

“应用说明”部分 下显示的仅为推荐的起始稀释度;实际最佳的稀释度/浓度应由使用者检定。

应用	Ab评论	说明
Flow Cyt		

### 应用说明

Flow Cyt: Use 20µl for 10<sup>6</sup> cells, or for 100 µl of whole blood.

Not yet tested in other applications.

Optimal dilutions/concentrations should be determined by the end user.

## 靶标

### 功能

Integrin alpha-L/beta-2 is a receptor for ICAM1, ICAM2, ICAM3 and ICAM4. Integrins alpha-M/beta-2 and alpha-X/beta-2 are receptors for the iC3b fragment of the third complement component and for fibrinogen. Integrin alpha-X/beta-2 recognizes the sequence G-P-R in fibrinogen alpha-chain. Integrin alpha-M/beta-2 recognizes P1 and P2 peptides of fibrinogen gamma chain. Integrin alpha-M/beta-2 is also a receptor for factor X. Integrin alpha-D/beta-2 is a receptor for ICAM3 and VCAM1.

### 疾病相关

Defects in ITGB2 are the cause of leukocyte adhesion deficiency type 1 (LAD1) [MIM:116920]. LAD1 patients have recurrent bacterial infections and their leukocytes are deficient in a wide range of adhesion-dependent functions.

### 序列相似性

Belongs to the integrin beta chain family.  
Contains 1 VWFA domain.

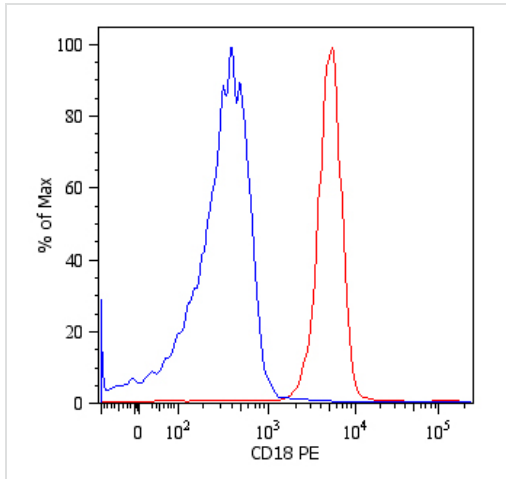
### 翻译后修饰

Both Ser-745 and Ser-756 become phosphorylated when T-cells are exposed to phorbol esters. Phosphorylation on Thr-758 (but not on Ser-756) allows interaction with 14-3-3 proteins.

### 细胞定位

Membrane.

## 图片



Flow Cytometry - PE Anti-CD18 antibody [MEM-48]  
(ab49921)

Surface staining of human peripheral blood cells with anti-human CD18. Cells in the granulocyte gate were used for analysis.

ab49921 was used at a recommended concentration of 2 µg/mL.

**Please note:** All products are "FOR RESEARCH USE ONLY. NOT FOR USE IN DIAGNOSTIC PROCEDURES"

### Our Abpromise to you: Quality guaranteed and expert technical support

---

- Replacement or refund for products not performing as stated on the datasheet
- Valid for 12 months from date of delivery
- Response to your inquiry within 24 hours
- We provide support in Chinese, English, French, German, Japanese and Spanish
- Extensive multi-media technical resources to help you
- We investigate all quality concerns to ensure our products perform to the highest standards

If the product does not perform as described on this datasheet, we will offer a refund or replacement. For full details of the Abpromise, please visit <https://www.abcam.cn/abpromise> or contact our technical team.

### Terms and conditions

---

- Guarantee only valid for products bought direct from Abcam or one of our authorized distributors