

PE Anti-CD16 antibody [3G8] ab117117

1 References 3 图像

概述	
产品名称	PE Anti-CD16抗体[3G8]
描述	PE小鼠单克隆抗体[3G8] to CD16
宿主	Mouse
偶联物	PE. Ex: 488nm, Em: 575nm
经测试应用	适用于: Flow Cyt
种属反应性	与反应: Human
免疫原	Tissue, cells or virus corresponding to Human CD16. Human neutrophils.
阳性对照	Flow Cyt: Lymphocytes from human blood.
常规说明	<p>The Life Science industry has been in the grips of a reproducibility crisis for a number of years. Abcam is leading the way in addressing this with our range of recombinant monoclonal antibodies and knockout edited cell lines for gold-standard validation. Please check that this product meets your needs before purchasing.</p> <p>If you have any questions, special requirements or concerns, please send us an inquiry and/or contact our Support team ahead of purchase. Recommended alternatives for this product can be found below, along with publications, customer reviews and Q&As</p>
性能	
形式	Liquid
存放说明	Shipped at 4°C. Store at +4°C.
存储溶液	pH: 7.4 Preservative: 0.1% Sodium azide Constituents: 99% PBS, 0.2% BSA
纯度	Size exclusion
克隆	单克隆
克隆编号	3G8
同种型	IgG1
应用	

The Abpromise guarantee

Abpromise™承诺保证使用ab117117于以下的经测试应用

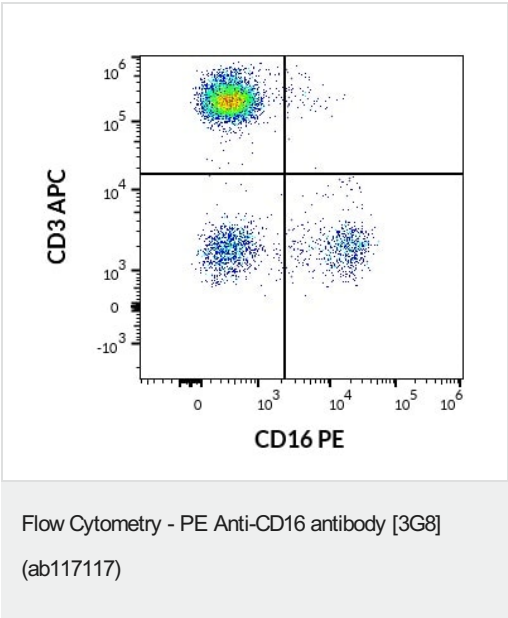
“应用说明”部分 下显示的仅为推荐的起始稀释度;实际最佳的稀释度/浓度应由使用者检定。

应用	Ab评论	说明
Flow Cyt		Use at an assay dependent concentration. 20 µl reagent / 100 µl of whole blood or 10 ⁶ cells in a suspension.

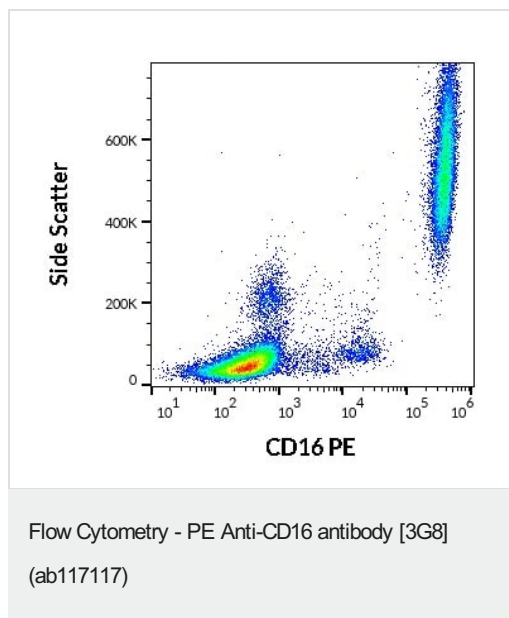
靶标

功能	Receptor for the Fc region of IgG. Binds complexed or aggregated IgG and also monomeric IgG. Mediates antibody-dependent cellular cytotoxicity (ADCC) and other antibody-dependent responses, such as phagocytosis.
组织特异性	Expressed on natural killer cells, macrophages, subpopulation of T-cells, immature thymocytes and placental trophoblasts.
序列相似性	Contains 2 Ig-like C2-type (immunoglobulin-like) domains.
翻译后修饰	Glycosylated. Contains high mannose- and complex-type oligosaccharides. The soluble form is produced by a proteolytic cleavage.
细胞定位	Cell membrane. Secreted. Exists also as a soluble receptor.

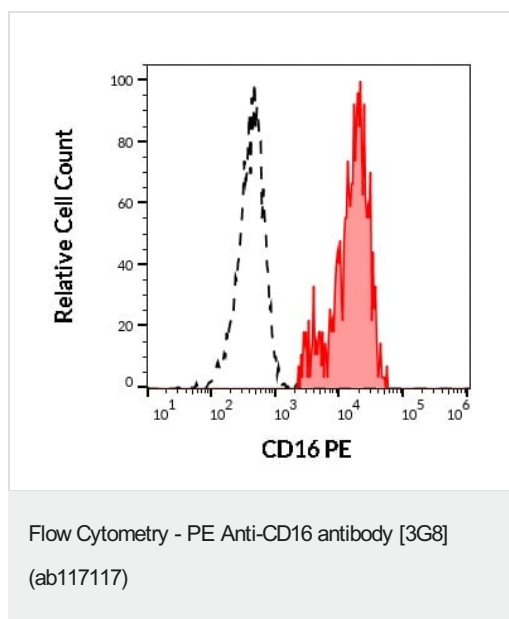
图片



Flow cytometry multicolor surface staining pattern of human lymphocytes using ab117117 at (20 µL reagent/100 µL of peripheral whole blood) and anti-human CD3 APC antibody at (10 µL reagent/100 µL of peripheral whole blood).



Flow cytometry surface staining pattern of human peripheral whole blood stained using ab117117 at (20 µL reagent/100 µL of peripheral whole blood).



Separation of human CD3 negative CD16 positive NK cells (red-filled) from human CD3 positive CD16 negative lymphocytes (black-dashed) in flow cytometry analysis (surface staining) of human peripheral whole blood stained using ab117117 at (20 µL reagent/100 µL of peripheral whole blood).

Please note: All products are "FOR RESEARCH USE ONLY. NOT FOR USE IN DIAGNOSTIC PROCEDURES"

Our Abpromise to you: Quality guaranteed and expert technical support

- Replacement or refund for products not performing as stated on the datasheet
- Valid for 12 months from date of delivery
- Response to your inquiry within 24 hours

- We provide support in Chinese, English, French, German, Japanese and Spanish
- Extensive multi-media technical resources to help you
- We investigate all quality concerns to ensure our products perform to the highest standards

If the product does not perform as described on this datasheet, we will offer a refund or replacement. For full details of the Abpromise, please visit <https://www.abcam.cn/abpromise> or contact our technical team.

Terms and conditions

- Guarantee only valid for products bought direct from Abcam or one of our authorized distributors