

PE Anti-CD11a antibody [TP1/40] ab91255

1 图像

概述

产品名称	PE Anti-CD11a抗体[TP1/40]
描述	PE小鼠单克隆抗体[TP1/40] to CD11a
宿主	Mouse
偶联物	PE. Ex: 488nm, Em: 575nm
特异性	Reacts strongly with all leucocytes
经测试应用	适用于: Flow Cyt
种属反应性	与反应: Human
免疫原	Tissue, cells or virus corresponding to Human CD11a. PMA and Ionomycin activated T cells blast (Human)
阳性对照	Human leukocytes
常规说明	<p>The Life Science industry has been in the grips of a reproducibility crisis for a number of years. Abcam is leading the way in addressing this with our range of recombinant monoclonal antibodies and knockout edited cell lines for gold-standard validation. Please check that this product meets your needs before purchasing.</p> <p>If you have any questions, special requirements or concerns, please send us an inquiry and/or contact our Support team ahead of purchase. Recommended alternatives for this product can be found below, along with publications, customer reviews and Q&As</p>

性能

形式	Liquid
存放说明	Shipped at 4°C. Store at +4°C.
存储溶液	pH: 7.20 Preservative: 0.09% Sodium azide Constituent: 1% BSA
纯度	Immunogen affinity purified
克隆	单克隆
克隆编号	TP1/40
同种型	IgG1

应用

The Abpromise guarantee **Abpromise™**承诺保证使用ab91255于以下的经测试应用

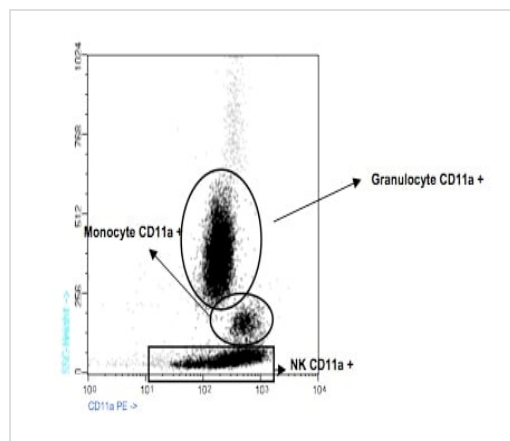
“应用说明”部分 下显示的仅为推荐的起始稀释度;实际最佳的稀释度/浓度应由使用者检定。

应用	Ab评论	说明
Flow Cyt		Use 20µl for 10 ⁶ cells.

靶标

功能	Integrin alpha-L/beta-2 is a receptor for ICAM1, ICAM2, ICAM3 and ICAM4. It is involved in a variety of immune phenomena including leukocyte-endothelial cell interaction, cytotoxic T-cell mediated killing, and antibody dependent killing by granulocytes and monocytes.
组织特异性	Leukocytes.
序列相似性	Belongs to the integrin alpha chain family. Contains 7 FG-GAP repeats. Contains 1 VWFA domain.
结构域	The integrin I-domain (insert) is a VWFA domain. Integrins with I-domains do not undergo protease cleavage.
细胞定位	Membrane.

图片



Flow cytometry analysis of CD11a expression in Human normal peripheral blood using ab91255 at 20µl/10⁶ cells.

Flow Cytometry - PE Anti-CD11a antibody [TP1/40]
(ab91255)

Please note: All products are "FOR RESEARCH USE ONLY. NOT FOR USE IN DIAGNOSTIC PROCEDURES"

Our Abpromise to you: Quality guaranteed and expert technical support

- Replacement or refund for products not performing as stated on the datasheet

- Valid for 12 months from date of delivery
- Response to your inquiry within 24 hours

- We provide support in Chinese, English, French, German, Japanese and Spanish
- Extensive multi-media technical resources to help you
- We investigate all quality concerns to ensure our products perform to the highest standards

If the product does not perform as described on this datasheet, we will offer a refund or replacement. For full details of the Abpromise, please visit <https://www.abcam.cn/abpromise> or contact our technical team.

Terms and conditions

- Guarantee only valid for products bought direct from Abcam or one of our authorized distributors