

PE Anti-CD105 antibody [MJ7/18] ab93567

7 References 1 图像

概述	
产品名称	PE Anti-CD105抗体[MJ7/18]
描述	PE大鼠单克隆抗体[MJ7/18] to CD105
宿主	Rat
偶联物	PE. Ex: 488nm, Em: 575nm
经测试应用	适用于: Flow Cyt
种属反应性	与反应: Mouse
免疫原	Tissue, cells or virus corresponding to Mouse CD105. Inflamed mouse skin Database link: Q63961
阳性对照	bEnd.3 (Mouse brain endothelioma cell line) whole cell lysate.
常规说明	<p>The Life Science industry has been in the grips of a reproducibility crisis for a number of years. Abcam is leading the way in addressing this with our range of recombinant monoclonal antibodies and knockout edited cell lines for gold-standard validation. Please check that this product meets your needs before purchasing.</p> <p>If you have any questions, special requirements or concerns, please send us an inquiry and/or contact our Support team ahead of purchase. Recommended alternatives for this product can be found below, along with publications, customer reviews and Q&As</p>
性能	
形式	Liquid
存放说明	Shipped at 4°C. Store at +4°C.
存储溶液	pH: 7.20 Preservative: 0.09% Sodium azide Constituent: PBS
纯度	Protein G purified
克隆	单克隆
克隆编号	MJ7/18
同种型	IgG2a
轻链类型	kappa

应用

The Abpromise guarantee

Abpromise™ 承诺保证使用 ab93567 于以下的经测试应用

“应用说明”部分 下显示的仅为推荐的起始稀释度; 实际最佳的稀释度/浓度应由使用者检定。

应用	Ab 评论	说明
Flow Cyt		Use 0.25-0.5 µg for 10^{5-8} cells. ab134674 - Rat monoclonal IgG2a, is suitable for use as an isotype control with this antibody.

靶标

功能

Major glycoprotein of vascular endothelium. May play a critical role in the binding of endothelial cells to integrins and/or other RGD receptors.

组织特异性

Endoglin is restricted to endothelial cells in all tissues except bone marrow.

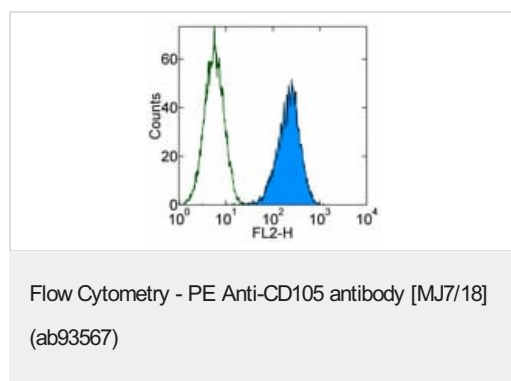
疾病相关

Defects in ENG are the cause of hereditary hemorrhagic telangiectasia type 1 (HHT1) [MIM:187300, 108010]; also known as Osler-Rendu-Weber syndrome 1 (ORW1). HHT1 is an autosomal dominant multisystemic vascular dysplasia, characterized by recurrent epistaxis, muco-cutaneous telangiectases, gastro-intestinal hemorrhage, and pulmonary (PAVM), cerebral (CAVM) and hepatic arteriovenous malformations; all secondary manifestations of the underlying vascular dysplasia. Although the first symptom of HHT1 in children is generally nose bleed, there is an important clinical heterogeneity.

细胞定位

Membrane.

图片



Staining of bEnd.3 (Mouse brain endothelioma cell line) whole cell lysate with 0.25 µg of PE Rat IgG2a Isotype Control (open histogram) or 0.25 µg of ab93567 (colored histogram). Total viable cells were used for analysis.

Please note: All products are "FOR RESEARCH USE ONLY. NOT FOR USE IN DIAGNOSTIC PROCEDURES"

Our Abpromise to you: Quality guaranteed and expert technical support

- Replacement or refund for products not performing as stated on the datasheet
- Valid for 12 months from date of delivery
- Response to your inquiry within 24 hours

- We provide support in Chinese, English, French, German, Japanese and Spanish
- Extensive multi-media technical resources to help you
- We investigate all quality concerns to ensure our products perform to the highest standards

If the product does not perform as described on this datasheet, we will offer a refund or replacement. For full details of the Abpromise, please visit <https://www.abcam.cn/abpromise> or contact our technical team.

Terms and conditions

- Guarantee only valid for products bought direct from Abcam or one of our authorized distributors