


PE Anti-alpha Tubulin antibody [EP1332Y] - Microtubule Marker ab208752

重组 RabMAb

3 图像

概述

| | |
|-------|--|
| 产品名称 | PE Anti-alpha Tubulin抗体[EP1332Y] - Microtubule Marker |
| 描述 | PE兔单克隆抗体[EP1332Y] to alpha Tubulin - Microtubule Marker |
| 宿主 | Rabbit |
| 偶联物 | PE. Ex: 488nm, Em: 575nm |
| 经测试应用 | 适用于: ICC/IF, Flow Cyt (Intra) |
| 种属反应性 | 与反应: Human 预测可用于: Mouse, Rat, Pig, Drosophila melanogaster  |
| 免疫原 | Synthetic peptide. This information is proprietary to Abcam and/or its suppliers. |
| 阳性对照 | Flow Cyt (intra): HeLa cells. ICC/IF: MCF-7 cells |
| 常规说明 | This product is a recombinant monoclonal antibody, which offers several advantages including: <ul style="list-style-type: none"> - High batch-to-batch consistency and reproducibility - Improved sensitivity and specificity - Long-term security of supply - Animal-free production For more information see here . Our RabMAb [®] technology is a patented hybridoma-based technology for making rabbit monoclonal antibodies. For details on our patents, please refer to RabMAb[®] patents . |

性能

| | |
|------|---|
| 形式 | Liquid |
| 存放说明 | Shipped at 4°C. Upon delivery aliquot. Store at +4°C. Do Not Freeze. Store In the Dark. |
| 存储溶液 | pH: 7.4 Preservative: 0.02% Sodium azide Constituents: PBS, 1% BSA |
| 纯度 | Protein A purified |
| 克隆 | 单克隆 |

克隆编号

EP1332Y

同种型

IgG

应用

The Abpromise guarantee

Abpromise™承诺保证使用ab208752于以下的经测试应用

“应用说明”部分 下显示的仅为推荐的起始稀释度;实际最佳的稀释度/浓度应由使用者检定。

| 应用 | Ab评论 | 说明 |
|------------------|------|---|
| ICC/IF | | 1/500. This product gave a positive signal in MCF-7 cells fixed with 4% formaldehyde (10 min) |
| Flow Cyt (Intra) | | 1/2500. ab209478 - Rabbit monoclonal IgG (Phycoerythrin), is suitable for use as an isotype control with this antibody. |

靶标

功能

Tubulin is the major constituent of microtubules. It binds two moles of GTP, one at an exchangeable site on the beta chain and one at a non-exchangeable site on the alpha chain.

序列相似性

Belongs to the tubulin family.

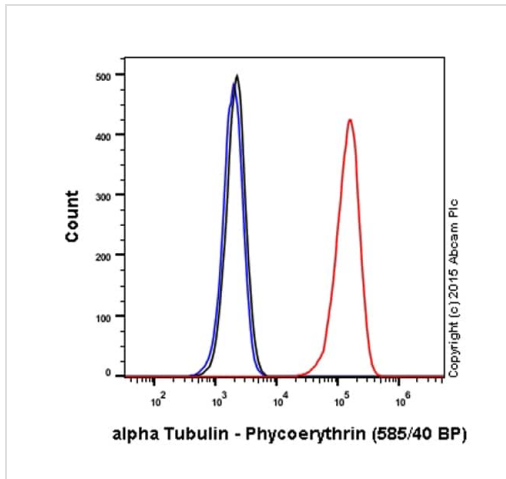
翻译后修饰

Some glutamate residues at the C-terminus are polyglutamylated. This modification occurs exclusively on glutamate residues and results in polyglutamate chains on the gamma-carboxyl group. Also monoglycylated but not polyglycylated due to the absence of functional TTL10 in human. Monoglycylation is mainly limited to tubulin incorporated into axonemes (cilia and flagella) whereas glutamylation is prevalent in neuronal cells, centrioles, axonemes, and the mitotic spindle. Both modifications can coexist on the same protein on adjacent residues, and lowering glycylation levels increases polyglutamylation, and reciprocally. The precise function of such modifications is still unclear but they regulate the assembly and dynamics of axonemal microtubules.
Acetylation of alpha chains at Lys-40 stabilizes microtubules and affects affinity and processivity of microtubule motors. This modification has a role in multiple cellular functions, ranging from cell motility, cell cycle progression or cell differentiation to intracellular trafficking and signaling.

细胞定位

Cytoplasm > cytoskeleton.

图片

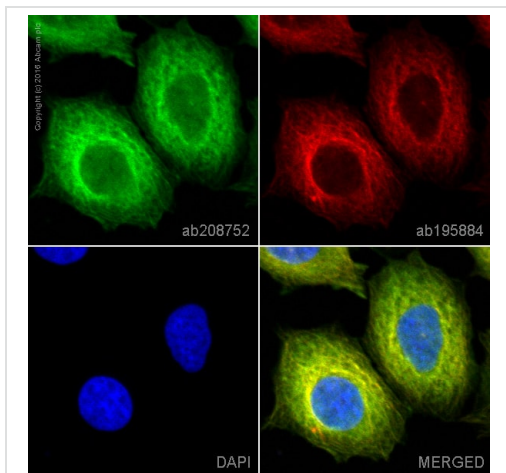


Flow Cytometry (Intracellular) - PE Anti-alpha Tubulin antibody [EP1332Y] - Microtubule Marker (ab208752)

Overlay histogram showing HeLa cells stained with ab208752 (red line). The cells were fixed with 4% formaldehyde (10 min) and then permeabilized with 90% methanol (-20°C) for 30 min. The cells were then incubated in 1x PBS / 10% normal goat serum to block non-specific protein-protein interactions followed by the antibody (**ab208750**, 1/2500 dilution) for 30 min at 22°C.

Isotype control antibody (black line) was rabbit IgG (monoclonal) Phycorythrin (**ab209478**) used at the same concentration and conditions as the primary antibody. Unlabelled sample (blue line) was also used as a control.

Acquisition of >5,000 events were collected using a 20 mW Solid State Blue Laser (488nm) and 585/40 bandpass filter.



Immunocytochemistry/ Immunofluorescence - PE Anti-alpha Tubulin antibody [EP1332Y] - Microtubule Marker (ab208752)

ab208752 staining alpha Tubulin in MCF7 cells. The cells were fixed with 4% formaldehyde (10 min), permeabilized with 0.1% Triton X-100 for 5 minutes and then blocked with 1% BSA/10% normal goat serum/0.3M glycine in 0.1% PBS-Tween for 1h. The cells were then incubated overnight at +4°C with ab208752 at 1/500 dilution (Pseudocolored in green) and **ab195884**, Rat monoclonal to Tubulin (Alexa Fluor® 647), at 1/250 dilution (shown in red). Nuclear DNA was labelled with DAPI (shown in blue).

Image was taken with a confocal microscope (Leica-Microsystems, TCS SP8).

Why choose a recombinant antibody?



Research with confidence
Consistent and reproducible results



Long-term and scalable supply
Recombinant technology



Success from the first experiment
Confirmed specificity



Ethical standards compliant
Animal-free production

PE Anti-alpha Tubulin antibody [EP1332Y] -
Microtubule Marker (ab208752)

Please note: All products are "FOR RESEARCH USE ONLY. NOT FOR USE IN DIAGNOSTIC PROCEDURES"

Our Abpromise to you: Quality guaranteed and expert technical support

- Replacement or refund for products not performing as stated on the datasheet
- Valid for 12 months from date of delivery
- Response to your inquiry within 24 hours
- We provide support in Chinese, English, French, German, Japanese and Spanish
- Extensive multi-media technical resources to help you
- We investigate all quality concerns to ensure our products perform to the highest standards

If the product does not perform as described on this datasheet, we will offer a refund or replacement. For full details of the Abpromise, please visit <https://www.abcam.cn/abpromise> or contact our technical team.

Terms and conditions

- Guarantee only valid for products bought direct from Abcam or one of our authorized distributors