

PE Anti-6X His tag® antibody [AD1.1.10] ab72467

★★★★★ [2 Abreviews](#) [13 References](#) [1 图像](#)

概述

产品名称	PE Anti-6X His tag®抗体[AD1.1.10]
描述	PE小鼠单克隆抗体[AD1.1.10] to 6X His tag®
宿主	Mouse
偶联物	PE. Ex: 488nm, Em: 575nm
经测试应用	适用于: Flow Cyt
种属反应性	与反应: Species independent
免疫原	Synthetic peptide HHHHHH tag - tagged
常规说明	Excitation max. lambda: 565>498 nm Emission max. lambda: 578 nm F/P 1:1. The Life Science industry has been in the grips of a reproducibility crisis for a number of years. Abcam is leading the way in addressing this with our range of recombinant monoclonal antibodies and knockout edited cell lines for gold-standard validation. Please check that this product meets your needs before purchasing. If you have any questions, special requirements or concerns, please send us an inquiry and/or contact our Support team ahead of purchase. Recommended alternatives for this product can be found below, along with publications, customer reviews and Q&As

性能

形式	Liquid
存放说明	Shipped at 4°C. Store at +4°C.
存储溶液	pH: 7.40 Preservative: 0.013% Sodium azide Constituents: 1.64% Sodium phosphate, 1.71% Sucrose, 0.1% BSA, 0.87% Sodium chloride
纯度	Size exclusion
纯化说明	Size exclusion chromatography as well as some proprietary methods for purifying the final materials were used.
克隆	单克隆
克隆编号	AD1.1.10
同种型	IgG1

应用

The Abpromise guarantee

Abpromise™承诺保证使用ab72467于以下的经测试应用

“应用说明”部分 下显示的仅为推荐的起始稀释度;实际最佳的稀释度/浓度应由使用者检定。

应用	Ab评论	说明
Flow Cyt	★★★★★ (2)	1/50 - 1/100. ab91357 - Mouse monoclonal IgG1, is suitable for use as an isotype control with this antibody.

靶标

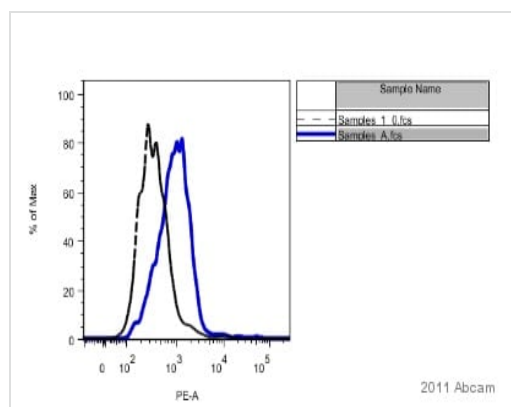
相关性

The H-H-H-H-H motif is used as a tag on many recombinant proteins to facilitate purification. His-tags can be fused to the amino- or carboxy- termini of proteins in transfected or transformed cells.

细胞定位

Depends upon the localization of the parent protein tagged with hexahistidine.

图片



Flow Cytometry - PE Anti-6XHis tag® antibody

[AD1.1.10] (ab72467)

This image is courtesy of an Anonymous Abreview.

BALB-3T3 cells, which express moderate amounts of EGFR, were incubated with a His6-tagged anti-EGFR fibronectin domain. The labeled cells were washed and incubated with 50 microliters of 1:15 diluted PE-conjugated anti-His6 antibody. Cells were washed and analyzed by flow cytometry. A control without fibronectin domain was also analyzed. Image: Dashed black line is control without fibronectin. Solid blue line is sample with His6-tagged anti-EGFR fibronectin domain.

Please note: All products are "FOR RESEARCH USE ONLY. NOT FOR USE IN DIAGNOSTIC PROCEDURES"

Our Abpromise to you: Quality guaranteed and expert technical support

- Replacement or refund for products not performing as stated on the datasheet
- Valid for 12 months from date of delivery
- Response to your inquiry within 24 hours
- We provide support in Chinese, English, French, German, Japanese and Spanish
- Extensive multi-media technical resources to help you

- We investigate all quality concerns to ensure our products perform to the highest standards

If the product does not perform as described on this datasheet, we will offer a refund or replacement. For full details of the Abpromise, please visit <https://www.abcam.cn/abpromise> or contact our technical team.

Terms and conditions

- Guarantee only valid for products bought direct from Abcam or one of our authorized distributors