


Anti-PDZ-RhoGEF antibody ab110059

3 References **1 图像**

概述

产品名称	Anti-PDZ-RhoGEF抗体
描述	兔多克隆抗体to PDZ-RhoGEF
宿主	Rabbit
经测试应用	适用于: WB
种属反应性	与反应: Human 预测可用于: Mouse, Rat 
免疫原	Synthetic peptide corresponding to Human PDZ-RhoGEF (N terminal).
阳性对照	A549 and COLO cell extracts.
常规说明	<p>The Life Science industry has been in the grips of a reproducibility crisis for a number of years. Abcam is leading the way in addressing this with our range of recombinant monoclonal antibodies and knockout edited cell lines for gold-standard validation. Please check that this product meets your needs before purchasing.</p> <p>If you have any questions, special requirements or concerns, please send us an inquiry and/or contact our Support team ahead of purchase. Recommended alternatives for this product can be found below, along with publications, customer reviews and Q&As</p>

性能

形式	Liquid
存放说明	Shipped at 4°C. Store at -20°C. Stable for 12 months at -20°C.
存储溶液	<p>pH: 7.40</p> <p>Preservative: 0.02% Sodium azide</p> <p>Constituents: PBS, 0.88% Sodium chloride, 50% Glycerol (glycerin, glycerine)</p>
纯度	PBS without Mg2+ and Ca2+
纯化说明	Immunogen affinity purified
克隆	ab110059 was affinity-purified from rabbit antiserum by affinity-chromatography using epitope-specific immunogen.
克隆	多克隆
同种型	IgG

应用

The Abpromise guarantee

Abpromise™ 承诺保证使用 ab110059 于以下的经测试应用

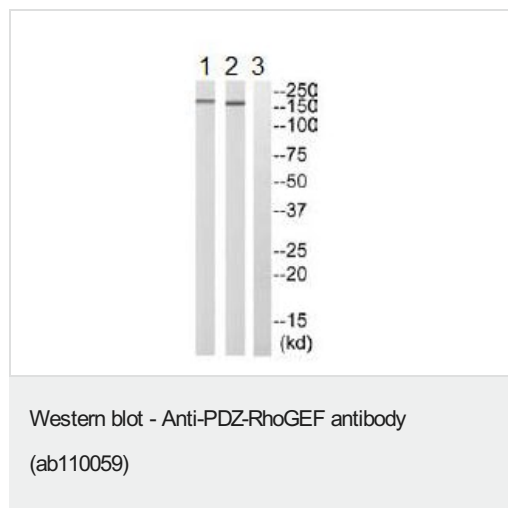
“应用说明”部分 下显示的仅为推荐的起始稀释度;实际最佳的稀释度/浓度应由使用者检定。

应用	Ab 评论	说明
WB		1/500 - 1/1000. Predicted molecular weight: 168 kDa.

靶标

功能	May play a role in the regulation of RhoA GTPase by guanine nucleotide-binding alpha-12 (GNA12) and alpha-13 (GNA13). Acts as guanine nucleotide exchange factor (GEF) for RhoA GTPase and may act as GTPase-activating protein (GAP) for GNA12 and GNA13.
组织特异性	Ubiquitously expressed.
序列相似性	Contains 1 DH (DBL-homology) domain. Contains 1 PDZ (DHR) domain. Contains 1 PH domain. Contains 1 RGSL (RGS-like) domain.
结构域	The poly-Pro region is essential for plasma membrane localization upon stimulation.
细胞定位	Cytoplasm. Membrane. Translocated to the membrane upon stimulation.

图片



All lanes : Anti-PDZ-RhoGEF antibody (ab110059) at 1/500 dilution

Lane 1 : A549 cell extract

Lane 2 : COLO cell extract

Lane 3 : COLO cell extract with immunizing peptide

Lysates/proteins at 30 µg per lane.

Predicted band size: 168 kDa

Please note: All products are "FOR RESEARCH USE ONLY. NOT FOR USE IN DIAGNOSTIC PROCEDURES"

Our Abpromise to you: Quality guaranteed and expert technical support

- Replacement or refund for products not performing as stated on the datasheet
- Valid for 12 months from date of delivery
- Response to your inquiry within 24 hours

- We provide support in Chinese, English, French, German, Japanese and Spanish
- Extensive multi-media technical resources to help you
- We investigate all quality concerns to ensure our products perform to the highest standards

If the product does not perform as described on this datasheet, we will offer a refund or replacement. For full details of the Abpromise, please visit <https://www.abcam.cn/abpromise> or contact our technical team.

Terms and conditions

- Guarantee only valid for products bought direct from Abcam or one of our authorized distributors