


# Anti-PDX1 antibody ab227586

[1 References](#) [6 图像](#)

### 概述

产品名称	Anti-PDX1抗体
描述	兔多克隆抗体to PDX1
宿主	Rabbit
经测试应用	适用于: IHC-P, WB
种属反应性	与反应: Mouse, Rat, Human 预测可用于: Dog, Pig 
免疫原	Synthetic peptide within Human PDX1 (internal sequence). The exact sequence is proprietary. Carrier-protein conjugated. Database link: <a href="#">P52945</a>
阳性对照	WB: Jurkat, Raji, NCI-H929 and AsPC-1 whole cell extracts; Mouse liver and pancreas liver tissue extracts; Rat liver tissue extract. IHC-P: Rat pancreas tissue.
常规说明	<p>The Life Science industry has been in the grips of a reproducibility crisis for a number of years. Abcam is leading the way in addressing this with our range of recombinant monoclonal antibodies and knockout edited cell lines for gold-standard validation. Please check that this product meets your needs before purchasing.</p> <p>If you have any questions, special requirements or concerns, please send us an inquiry and/or contact our Support team ahead of purchase. Recommended alternatives for this product can be found below, along with publications, customer reviews and Q&amp;As</p>

### 性能

形式	Liquid
存放说明	Shipped at 4°C. Store at +4°C short term (1-2 weeks). Upon delivery aliquot. Store at -20°C long term. Avoid freeze / thaw cycle.
存储溶液	pH: 7.00 Preservative: 0.025% Proclin 300 Constituents: 79% PBS, 20% Glycerol (glycerin, glycerine)
纯度	Immunogen affinity purified
克隆	多克隆
同种型	IgG

## 应用

**The Abpromise guarantee**      **Abpromise™**承诺保证使用ab227586于以下的经测试应用

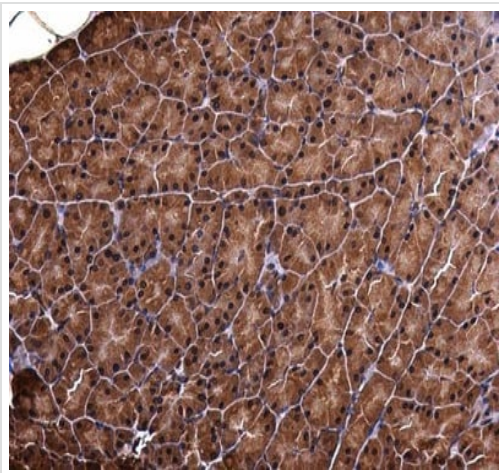
“应用说明”部分 下显示的仅为推荐的起始稀释度;实际最佳的稀释度/浓度应由使用者检定。

应用	Ab评论	说明
IHC-P		1/100 - 1/1000.
WB		1/500 - 1/3000. Predicted molecular weight: 31 kDa.

## 靶标

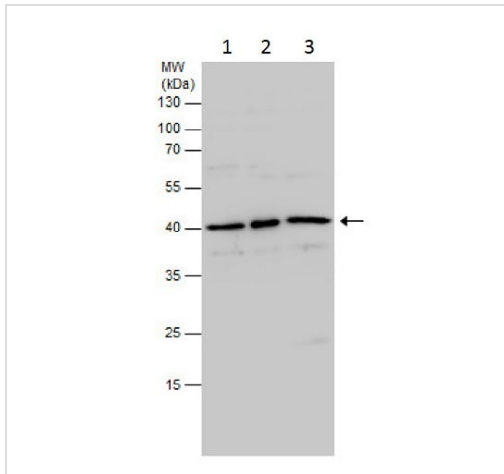
<b>功能</b>	Activates insulin, somatostatin, glucokinase, islet amyloid polypeptide and glucose transporter type 2 gene transcription. Particularly involved in glucose-dependent regulation of insulin gene transcription. Binds preferentially the DNA motif 5'-[CT]TAAT[TTG]-3'. During development, specifies the early pancreatic epithelium, permitting its proliferation, branching and subsequent differentiation. At adult stage, required for maintaining the hormone-producing phenotype of the beta-cell.
<b>组织特异性</b>	Duodenum and pancreas (Langerhans islet beta cells and small subsets of endocrine non-beta-cells, at low levels in acinar cells).
<b>疾病相关</b>	<p>Defects in PDX1 are a cause of pancreatic agenesis (PAC) [MIM:260370]. This autosomal recessive disorder is characterized by absence or hypoplasia of pancreas, leading to early-onset insulin-dependent diabetes mellitus. This was found in a frameshift mutation that produces a truncated protein and results in a second initiation that produces a second protein that act as a dominant negative mutant.</p> <p>Defects in PDX1 are a cause of non-insulin-dependent diabetes mellitus (NIDDM) [MIM:125853]; also known as diabetes mellitus type 2. NIDDM is characterized by an autosomal dominant mode of inheritance, onset during adulthood and insulin resistance.</p> <p>Defects in PDX1 are the cause of maturity-onset diabetes of the young type 4 (MODY4) [MIM:606392]; also symbolized MODY-4. MODY is a form of diabetes that is characterized by an autosomal dominant mode of inheritance, onset in childhood or early adulthood (usually before 25 years of age), a primary defect in insulin secretion and frequent insulin-independence at the beginning of the disease.</p>
<b>序列相似性</b>	<p>Belongs to the Antp homeobox family. IPF1/XIHbox-8 subfamily.</p> <p>Contains 1 homeobox DNA-binding domain.</p>
<b>结构域</b>	<p>The Antp-type hexapeptide mediates heterodimerization with PBX on a regulatory element of the somatostatin promoter.</p> <p>The homeodomain, which contains the nuclear localization signal, not only mediates DNA-binding, but also acts as a protein-protein interaction domain for TCF3(E47), NEUROD1 and HMG-I(Y).</p>
<b>翻译后修饰</b>	Phosphorylated by the SAPK2 pathway at high intracellular glucose concentration.
<b>细胞定位</b>	Nucleus.

## 图片



Immunohistochemistry (Formalin/PFA-fixed paraffin-embedded sections) - Anti-PDX1 antibody (ab227586)

Paraffin-embedded rat pancreas tissue stained for PDX1 using ab227586 at 1/500 dilution in immunohistochemical analysis.



Western blot - Anti-PDX1 antibody (ab227586)

**All lanes** : Anti-PDX1 antibody (ab227586) at 1/1000 dilution

**Lane 1** : Jurkat (human T cell leukemia cell line from peripheral blood) whole cell extract

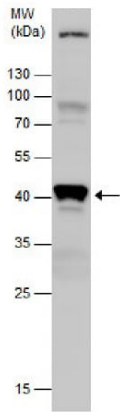
**Lane 2** : Raji (human Burkitt's lymphoma cell line) whole cell extract

**Lane 3** : NCI-H929 (human bone marrow lymphoblast cell line) whole cell extract

Lysates/proteins at 30 µg per lane.

**Predicted band size:** 31 kDa

12% SDS-PAGE gel.

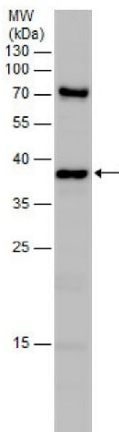


Western blot - Anti-PDX1 antibody (ab227586)

Anti-PDX1 antibody (ab227586) at 1/1000 dilution + Mouse pancreas tissue extract at 50  $\mu$ g

**Predicted band size:** 31 kDa

12% SDS-PAGE gel.

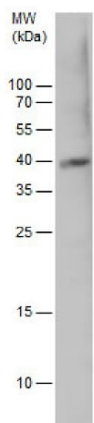


Western blot - Anti-PDX1 antibody (ab227586)

Anti-PDX1 antibody (ab227586) at 1/1000 dilution + AsPC-1 whole cell extract at 30  $\mu$ g

**Predicted band size:** 31 kDa

12% SDS-PAGE gel.

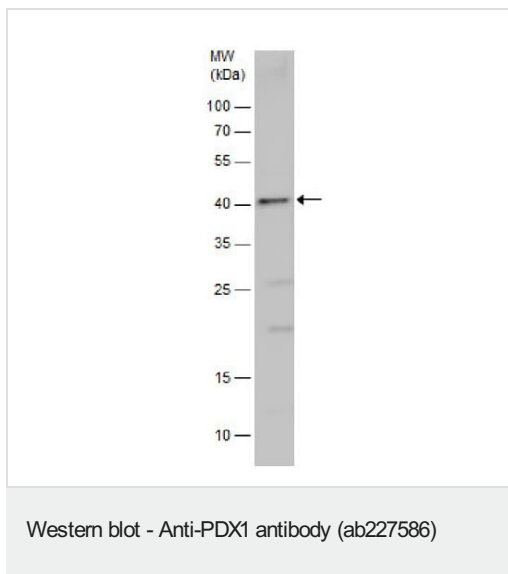


Western blot - Anti-PDX1 antibody (ab227586)

Anti-PDX1 antibody (ab227586) at 1/1000 dilution + Rat liver tissue extract at 50  $\mu$ g

**Predicted band size:** 31 kDa

12% SDS-PAGE gel.



Anti-PDX1 antibody (ab227586) at 1/1000 dilution + Mouse liver tissue extract at 50  $\mu$ g

**Predicted band size:** 31 kDa

12% SDS-PAGE gel.

**Please note:** All products are "FOR RESEARCH USE ONLY. NOT FOR USE IN DIAGNOSTIC PROCEDURES"

### Our Abpromise to you: Quality guaranteed and expert technical support

---

- Replacement or refund for products not performing as stated on the datasheet
- Valid for 12 months from date of delivery
- Response to your inquiry within 24 hours
- We provide support in Chinese, English, French, German, Japanese and Spanish
- Extensive multi-media technical resources to help you
- We investigate all quality concerns to ensure our products perform to the highest standards

If the product does not perform as described on this datasheet, we will offer a refund or replacement. For full details of the Abpromise, please visit <https://www.abcam.cn/abpromise> or contact our technical team.

### Terms and conditions

---

- Guarantee only valid for products bought direct from Abcam or one of our authorized distributors