

# Anti-PDLIM7 antibody ab86065

[1 References](#) [2 图像](#)

### 概述

|       |   |
|-------|---|
| 产品名称  | Anti-PDLIM7抗体   |
| 描述    | 兔多克隆抗体to PDLIM7   |
| 宿主    | Rabbit  |
| 经测试应用 | 适用于: WB, IP   |
| 种属反应性 | 与反应: Human<br>预测可用于: Horse, Cow, Dog, Chimpanzee, Ferret, Rhesus monkey, Gorilla, Bat    |
| 免疫原   | Synthetic peptide corresponding to a region between amino acids 125 and 175 of Human PDLIM7 (NP_005442.2)   |
| 阳性对照  | Hela cell lysate  |
| 常规说明  | <p>The Life Science industry has been in the grips of a reproducibility crisis for a number of years. Abcam is leading the way in addressing this with our range of recombinant monoclonal antibodies and knockout edited cell lines for gold-standard validation. Please check that this product meets your needs before purchasing.</p> <p>If you have any questions, special requirements or concerns, please send us an inquiry and/or contact our Support team ahead of purchase. Recommended alternatives for this product can be found below, along with publications, customer reviews and Q&amp;As</p> |

### 性能

|      |  |
|------|--|
| 形式   | Liquid   |
| 存放说明 | Shipped at 4°C. Upon delivery aliquot and store at -20°C. Avoid freeze / thaw cycles.                      |
| 存储溶液 | <p>pH: 6.8</p> <p>Preservative: 0.09% Sodium azide</p> <p>Constituents: 0.1% BSA, Tris buffered saline</p> |
| 纯度   | Immunogen affinity purified  |
| 克隆   | 多克隆  |
| 同种型  | IgG  |

### 应用

The Abpromise guarantee

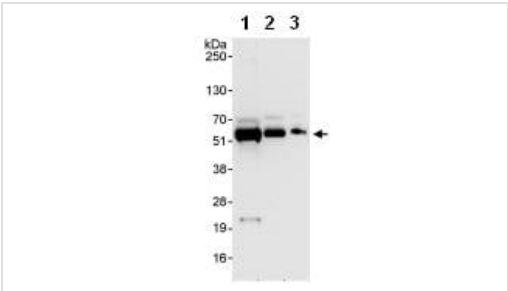
Abpromise™承诺保证使用ab86065于以下的经测试应用

“应用说明”部分 下显示的仅为推荐的起始稀释度;实际最佳的稀释度/浓度应由使用者检定。

| 应用 | Ab评论 | 说明  |
|----|------|---|
| WB |      | 1/2000 - 1/10000. Predicted molecular weight: 50 kDa. |
| IP |      | Use at 2-5 µg/mg of lysate.                           |

|       |   |
|-------|---|
| 靶标    |   |
| 功能    | May function as a scaffold on which the coordinated assembly of proteins can occur. May play a role as an adapter that, via its PDZ domain, localizes LIM-binding proteins to actin filaments of both skeletal muscle and nonmuscle tissues. Involved in both of the two fundamental mechanisms of bone formation, direct bone formation (e.g. embryonic flat bones mandible and cranium), and endochondral bone formation (e.g. embryonic long bone development). Plays a role during fracture repair. Involved in BMP6 signaling pathway. |
| 组织特异性 | Isoform 1 and isoform 2 are expressed ubiquitously, however, isoform 2 predominates in skeletal muscle, isoform 1 is more abundant in lung, spleen, leukocytes and fetal liver.   |
| 序列相似性 | Contains 3 LIM zinc-binding domains.<br>Contains 1 PDZ (DHR) domain.  |
| 结构域   | The LIM zinc-binding 2 (LIM 2) domain interacts with TBX4.<br>The LIM zinc-binding 3 (LIM 3) domain provides the structural basis for recognition of tyrosine-containing tight turn structures. This domain is necessary and sufficient for interaction with TBX5. Anchored to cell periphery via its N-terminal PDZ domain.  |
| 细胞定位  | Cytoplasm. Cytoplasm > cytoskeleton. Colocalizes with RET to the cell periphery and in some cytoskeletal components. Colocalizes with TPM2 near the Z line in muscle. Co-localizes with TBX4 and TBX5 to actin filaments.   |

图片



Western blot - Anti-PDLIM7 antibody (ab86065)

**All lanes :** Anti-PDLIM7 antibody (ab86065) at 0.04 µg/ml

**Lane 1 :** Hela whole cell lysate at 50 µg

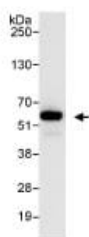
**Lane 2 :** Hela whole cell lysate at 15 µg

**Lane 3 :** Hela whole cell lysate at 5 µg

Developed using the ECL technique.

**Predicted band size:** 50 kDa

**Exposure time:** 30 seconds



Immunoprecipitation - Anti-PDLIM7 antibody  
(ab86065)

Detection of PDLIM7 by Western blot of Immunoprecipitate.  
ab86065, at 1 µg/ml, staining PDLIM7 in HeLa whole cell lysate  
immunoprecipitated using ab86065 at 3 µg/mg lysate (1 mg/IP;  
20% of IP loaded/lane).

Detection: Chemiluminescence with an exposure time of 3  
seconds.

**Please note:** All products are "FOR RESEARCH USE ONLY. NOT FOR USE IN DIAGNOSTIC PROCEDURES"

### Our Abpromise to you: Quality guaranteed and expert technical support

---

- Replacement or refund for products not performing as stated on the datasheet
- Valid for 12 months from date of delivery
- Response to your inquiry within 24 hours
- We provide support in Chinese, English, French, German, Japanese and Spanish
- Extensive multi-media technical resources to help you
- We investigate all quality concerns to ensure our products perform to the highest standards

If the product does not perform as described on this datasheet, we will offer a refund or replacement. For full details of the Abpromise, please visit <https://www.abcam.cn/abpromise> or contact our technical team.

### Terms and conditions

---

- Guarantee only valid for products bought direct from Abcam or one of our authorized distributors