

Anti-PDGFR alpha antibody [APA5] ab90967

★★★★★ [1 Abreviews](#) [12 References](#) [1 图像](#)

概述

产品名称	Anti-PDGFR alpha抗体[APA5]
描述	大鼠单克隆抗体[APA5] to PDGFR alpha
宿主	Rat
经测试应用	适用于: Flow Cyt
种属反应性	与反应: Mouse
免疫原	Fusion protein corresponding to Mouse PDGFR alpha (extracellular). Fusion protein containing the extracellular domain of Mouse PDGFR alpha and the Fc portion of Human IgG1 purified from the culture supernatant of transfected COS1 cells
阳性对照	Flow Cyt: Mouse NIH3T3 cells.
常规说明	<p>The Life Science industry has been in the grips of a reproducibility crisis for a number of years. Abcam is leading the way in addressing this with our range of recombinant monoclonal antibodies and knockout edited cell lines for gold-standard validation. Please check that this product meets your needs before purchasing.</p> <p>If you have any questions, special requirements or concerns, please send us an inquiry and/or contact our Support team ahead of purchase. Recommended alternatives for this product can be found below, along with publications, customer reviews and Q&As</p>

性能

形式	Liquid
存放说明	Shipped at 4°C. Store at +4°C short term (1-2 weeks). Store at -20°C or -80°C. Avoid freeze / thaw cycle.
存储溶液	<p>pH: 7.20</p> <p>Preservative: 0.09% Sodium azide</p> <p>Constituents: PBS, 0.87% Sodium chloride</p>
纯度	Protein A purified
克隆	单克隆
克隆编号	APA5
同种型	IgG2a
轻链类型	kappa

应用

The Abpromise guarantee Abpromise™ 承诺保证使用 ab90967 于以下的经测试应用

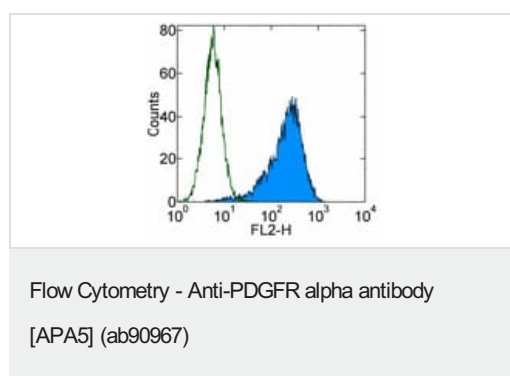
“应用说明”部分 下显示的仅为推荐的起始稀释度;实际最佳的稀释度/浓度应由使用者检定。

应用	Ab 评论	说明
Flow Cyt		Use 1 µg for 10 ⁶ cells. ab18450 - Rat monoclonal IgG2a, is suitable for use as an isotype control with this antibody.

靶标

功能	Receptor that binds both PDGFA and PDGFB and has a tyrosine-protein kinase activity.
组织特异性	Expressed in primary and metastatic colon tumors and in normal colon tissue. Tumors may express a different isoform to that found in normal tissue.
疾病相关	Note=A chromosomal aberration involving PDGFRA is found in some cases of hypereosinophilic syndrome. Interstitial chromosomal deletion del(4)(q12q12) causes the fusion of FIP1L1 and PDGFRA (FIP1L1-PDGFR).
序列相似性	Belongs to the protein kinase superfamily. Tyr protein kinase family. CSF-1/PDGF receptor subfamily. Contains 5 Ig-like C2-type (immunoglobulin-like) domains. Contains 1 protein kinase domain.
细胞定位	Membrane.

图片



Staining of NIH/3T3 cells with 0.5 µg Rat IgG2a control antibody (open histogram) or 0.5 µg of ab90967 (colored histogram) followed by Biotin Anti-Rat IgG secondary antibody. Total viable cells were analysed.

Please note: All products are "FOR RESEARCH USE ONLY. NOT FOR USE IN DIAGNOSTIC PROCEDURES"

Our Abpromise to you: Quality guaranteed and expert technical support

- Replacement or refund for products not performing as stated on the datasheet
- Valid for 12 months from date of delivery

- Response to your inquiry within 24 hours
- We provide support in Chinese, English, French, German, Japanese and Spanish
- Extensive multi-media technical resources to help you
- We investigate all quality concerns to ensure our products perform to the highest standards

If the product does not perform as described on this datasheet, we will offer a refund or replacement. For full details of the Abpromise, please visit <https://www.abcam.cn/abpromise> or contact our technical team.

Terms and conditions

- Guarantee only valid for products bought direct from Abcam or one of our authorized distributors