

Anti-PDGF B antibody ab111310

3 References **2 图像**

概述

产品名称	Anti-PDGF B抗体
描述	山羊多克隆抗体to PDGF B
宿主	Goat
经测试应用	适用于: IHC-P
种属反应性	与反应: Human 预测可用于: Mouse, Rat, Sheep, Cow, Dog 
免疫原	Synthetic peptide corresponding to Human PDGF B (C terminal) conjugated to keyhole limpet haemocyanin.  Run BLAST with Expasy  Run BLAST with NCBI
常规说明	<p>The Life Science industry has been in the grips of a reproducibility crisis for a number of years. Abcam is leading the way in addressing this with our range of recombinant monoclonal antibodies and knockout edited cell lines for gold-standard validation. Please check that this product meets your needs before purchasing.</p> <p>If you have any questions, special requirements or concerns, please send us an inquiry and/or contact our Support team ahead of purchase. Recommended alternatives for this product can be found below, along with publications, customer reviews and Q&As</p>

性能

形式	Liquid
存放说明	Shipped at 4°C. Store at +4°C short term (1-2 weeks). Upon delivery aliquot. Store at -20°C long term.
存储溶液	pH: 7.30 Preservative: 0.02% Sodium azide Constituents: Tris buffered saline, 0.5% BSA
纯度	Immunogen affinity purified
克隆	多克隆
同种型	IgG

应用

The Abpromise guarantee

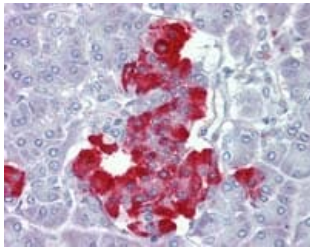
Abpromise™ 承诺保证使用ab111310于以下的经测试应用

“应用说明”部分 下显示的仅为推荐的起始稀释度;实际最佳的稀释度/浓度应由使用者检定。

应用	Ab评论	说明
IHC-P		Use a concentration of 3.75 µg/ml. Perform heat mediated antigen retrieval with citrate buffer pH 6 before commencing with IHC staining protocol.

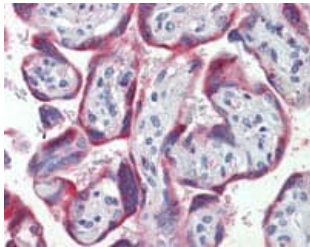
靶标

图片



Immunohistochemistry (Formalin/PFA-fixed paraffin-embedded sections) - Anti-PDGF B antibody (ab111310)

Immunohistochemistry Image of Human Pancreas tissue: Formalin Fixed and Paraffin Embedded (FFPE) and stained with anti PDGF B antibody (ab111310) at 3.75 µg/ml. After incubation with the primary antibody, slides were incubated with biotinylated secondary antibody, followed by alkaline phosphatase streptavidin and chromogen. The stained slides were evaluated by a pathologist to confirm staining specificity.



Immunohistochemistry (Formalin/PFA-fixed paraffin-embedded sections) - Anti-PDGF B antibody (ab111310)

Immunohistochemistry Image of Human Placenta tissue: Formalin-Fixed and Paraffin-Embedded (FFPE) and stained with anti-PDGF B antibody (ab111310) at 3.75 µg/ml. After incubation with the primary antibody, slides were incubated with biotinylated secondary antibody, followed by alkaline phosphatase streptavidin and chromogen. The stained slides were evaluated by a pathologist to confirm staining specificity.

Please note: All products are "FOR RESEARCH USE ONLY. NOT FOR USE IN DIAGNOSTIC PROCEDURES"

Our Abpromise to you: Quality guaranteed and expert technical support

- Replacement or refund for products not performing as stated on the datasheet
- Valid for 12 months from date of delivery
- Response to your inquiry within 24 hours

- We provide support in Chinese, English, French, German, Japanese and Spanish
- Extensive multi-media technical resources to help you
- We investigate all quality concerns to ensure our products perform to the highest standards

If the product does not perform as described on this datasheet, we will offer a refund or replacement. For full details of the Abpromise, please visit <https://www.abcam.cn/abpromise> or contact our technical team.

Terms and conditions

- Guarantee only valid for products bought direct from Abcam or one of our authorized distributors