

Anti-PDE7A/HCP1 antibody ab14616

[2 References](#) [1 图像](#)

概述

产品名称	Anti-PDE7A/HCP1抗体
描述	兔多克隆抗体to PDE7A/HCP1
宿主	Rabbit
经测试应用	适用于: WB
种属反应性	与反应: Rat
免疫原	Synthetic peptide corresponding to PDE7A/HCP1.
常规说明	<p>The Life Science industry has been in the grips of a reproducibility crisis for a number of years. Abcam is leading the way in addressing this with our range of recombinant monoclonal antibodies and knockout edited cell lines for gold-standard validation. Please check that this product meets your needs before purchasing.</p> <p>If you have any questions, special requirements or concerns, please send us an inquiry and/or contact our Support team ahead of purchase. Recommended alternatives for this product can be found below, along with publications, customer reviews and Q&As</p>

性能

形式	Liquid
存放说明	Shipped at 4°C. Upon delivery aliquot and store at -20°C or -80°C. Avoid repeated freeze / thaw cycles.
存储溶液	Preservative: 0.02% Thimerosal (merthiolate)
纯度	Immunogen affinity purified
克隆	多克隆
同种型	IgG

应用

The Abpromise guarantee **Abpromise™**承诺保证使用ab14616于以下的经测试应用

“应用说明”部分 下显示的仅为推荐的起始稀释度;实际最佳的稀释度/浓度应由使用者检定。

应用	Ab评论	说明
WB		1/500. Detects a band of approximately 53 kDa (predicted molecular weight: 55 kDa).

靶标

功能

Hydrolyzes the second messenger cAMP, which is a key regulator of many important physiological processes. May have a role in muscle signal transduction.

组织特异性

PDE7A1 is found at high levels in skeletal muscle and at low levels in a variety of tissues including brain and heart. It is expressed as well in two T-cell lines. PDE7A2 is found abundantly in skeletal muscle and at low levels in heart.

通路

Purine metabolism; 3',5'-cyclic AMP degradation; AMP from 3',5'-cyclic AMP: step 1/1.

序列相似性

Belongs to the cyclic nucleotide phosphodiesterase family. PDE7 subfamily.

发展阶段

Developmentally regulated. PDE7A1 and PDE7A2 are found in several fetal tissues, expression is reduced throughout development. It persists strongly only in adult skeletal muscle.

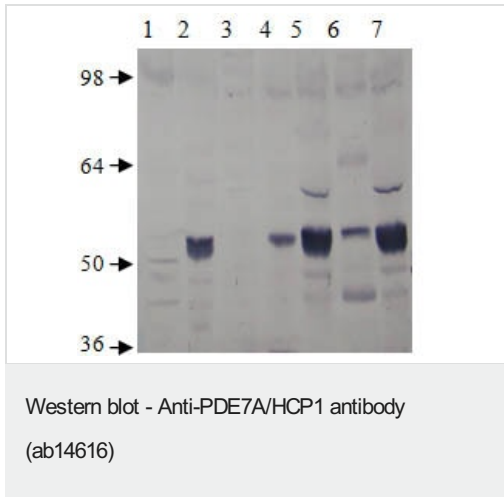
结构域

Composed of a C-terminal catalytic domain containing two putative divalent metal sites and an N-terminal regulatory domain.

细胞定位

Cytoplasm > cytosol. PDE7A1 (57 kDa) is located mostly to soluble cellular fractions and Cytoplasm. PDE7A2 (50 kDa) is located to particulate cellular fractions.

图片



All lanes : Anti-PDE7A/HCP1 antibody (ab14616) at 1/500 dilution

Lane 1 : Rat Lungs

Lane 2 : Rat Kidney

Lane 3 : Rat Testis

Lane 4 : Rat PC-PDE7A/HCP1

Lanes 5 & 7 : Rat Heart

Lane 6 : Rat Brain

Predicted band size: 55 kDa

Please note: All products are "FOR RESEARCH USE ONLY. NOT FOR USE IN DIAGNOSTIC PROCEDURES"

Our Abpromise to you: Quality guaranteed and expert technical support

- Replacement or refund for products not performing as stated on the datasheet
- Valid for 12 months from date of delivery
- Response to your inquiry within 24 hours

- We provide support in Chinese, English, French, German, Japanese and Spanish
- Extensive multi-media technical resources to help you
- We investigate all quality concerns to ensure our products perform to the highest standards

If the product does not perform as described on this datasheet, we will offer a refund or replacement. For full details of the Abpromise, please visit <https://www.abcam.cn/abpromise> or contact our technical team.

Terms and conditions

- Guarantee only valid for products bought direct from Abcam or one of our authorized distributors