



### Anti-PDE6D antibody ab5665

★★★★★ [1 Abreviews](#) [3 References](#) [2 图像](#)

#### 概述

产品名称	Anti-PDE6D抗体
描述	兔多克隆抗体to PDE6D
宿主	Rabbit
特异性	This antibody does not detect other PDE6 isoforms.
经测试应用	<b>适用于:</b> ICC/IF, WB, ICC, IHC-Fr
种属反应性	<b>与反应:</b> Mouse, Sheep, Cow, Dog, Human, Pig
免疫原	Synthetic peptide corresponding to Mouse PDE6D aa 1-16. Sequence: MSAKDERAR(D/E)ILRGFK  (Peptide available as <a href="#">ab41788</a> )
阳性对照	ICC/IF: B3 cells, BAEC cells
常规说明	<div>  <a href="#">Run BLAST with</a>  <a href="#">Run BLAST with</a> </div> <p>The Life Science industry has been in the grips of a reproducibility crisis for a number of years. Abcam is leading the way in addressing this with our range of recombinant monoclonal antibodies and knockout edited cell lines for gold-standard validation. Please check that this product meets your needs before purchasing.</p> <p>If you have any questions, special requirements or concerns, please send us an inquiry and/or contact our Support team ahead of purchase. Recommended alternatives for this product can be found below, along with publications, customer reviews and Q&amp;As</p>

#### 性能

形式	Liquid
存放说明	Shipped at 4°C. Store at +4°C short term (1-2 weeks). Upon delivery aliquot. Store at -20°C or -80°C. Avoid freeze / thaw cycle.
存储溶液	Preservative: 0.05% Sodium azide Constituents: 99% PBS, 0.1% BSA
纯度	Immunogen affinity purified
克隆	多克隆

同种型

IgG

应用

The Abpromise guarantee

Abpromise™承诺保证使用ab5665于以下的经测试应用

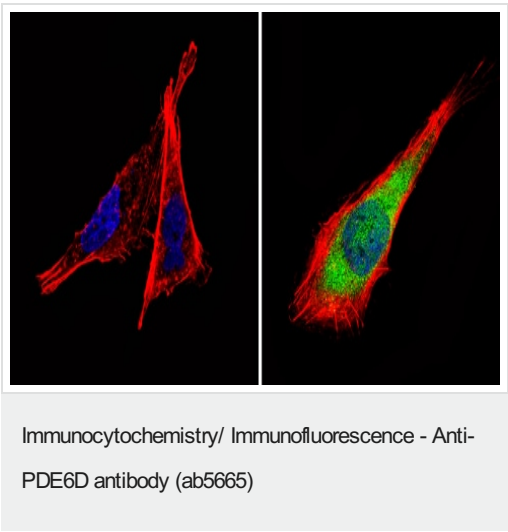
“应用说明”部分 下显示的仅为推荐的起始稀释度;实际最佳的稀释度/浓度应由使用者检定。

应用	Ab评论	说明
ICC/IF		1/10 - 1/200.
WB	★★★★★ (1)	Use at an assay dependent concentration.
ICC		Use at an assay dependent concentration.
IHC-Fr		Use at an assay dependent concentration. Immunohistochemical staining of PDE6D in bovine retinal cross-sections using ab5665 results in staining of retinal outer segments.

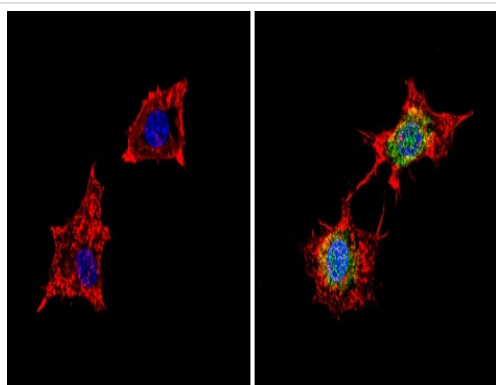
靶标

功能	Acts as a GTP specific dissociation inhibitor (GDI). Increases the affinity of ARL3 for GTP by several orders of magnitude and does so by decreasing the nucleotide dissociation rate. Stabilizes Arl3-GTP by decreasing the nucleotide dissociation.
组织特异性	Retina.
序列相似性	Belongs to the PDE6D/unc-119 family.

图片



Immunocytochemistry/Immunofluorescence analysis of PDE6D (green) showing staining in the cytoplasm and nucleus of B-3 cells (right) compared to a negative control without primary antibody (left). Formalin-fixed cells were permeabilized with 0.1% Triton X-100 in TBS for 5-10 minutes and blocked with 3% BSA-PBS for 30 minutes at room temperature. Cells were incubated with [ab5565](#) in 3% BSA-PBS at a dilution of 1:100 and incubated overnight at 4 °C in a humidified chamber. Cells were washed with PBST and incubated with a DyLight-conjugated secondary antibody in PBS at room temperature in the dark. F-actin (red) was stained with a fluorescent red phalloidin and nuclei (blue) were stained with Hoechst or DAPI. Images were taken at a magnification of 60x.



Immunocytochemistry/ Immunofluorescence - Anti-PDE6D antibody (ab5665)

Immunocytochemistry/Immunofluorescence analysis of PDE6D (green) showing staining in the cytoplasm and nucleus of BAEC cells (right) compared to a negative control without primary antibody (left). Formalin-fixed cells were permeabilized with 0.1% Triton X-100 in TBS for 5-10 minutes and blocked with 3% BSA-PBS for 30 minutes at room temperature. Cells were incubated with ab5665 in 3% BSA-PBS at a dilution of 1:100 and incubated overnight at 4 °C in a humidified chamber. Cells were washed with PBST and incubated with a DyLight-conjugated secondary antibody in PBS at room temperature in the dark. F-actin (red) was stained with a fluorescent red phalloidin and nuclei (blue) were stained with Hoechst or DAPI. Images were taken at a magnification of 60x.

**Please note:** All products are "FOR RESEARCH USE ONLY. NOT FOR USE IN DIAGNOSTIC PROCEDURES"

#### Our Abpromise to you: Quality guaranteed and expert technical support

- Replacement or refund for products not performing as stated on the datasheet
- Valid for 12 months from date of delivery
- Response to your inquiry within 24 hours
- We provide support in Chinese, English, French, German, Japanese and Spanish
- Extensive multi-media technical resources to help you
- We investigate all quality concerns to ensure our products perform to the highest standards

If the product does not perform as described on this datasheet, we will offer a refund or replacement. For full details of the Abpromise, please visit <https://www.abcam.cn/abpromise> or contact our technical team.

#### Terms and conditions

- Guarantee only valid for products bought direct from Abcam or one of our authorized distributors