

Anti-PDE5A/PDE5 antibody ab14672

★★★★★ [1 Abreviews](#) [12 References](#) [2 图像](#)

概述

| | |
|-------|---|
| 产品名称 | Anti-PDE5A/PDE5抗体 |
| 描述 | 兔多克隆抗体to PDE5A/PDE5 |
| 宿主 | Rabbit |
| 特异性 | This antibody detects 99 and 89 kDa PDE5A/PDE5 proteins in various tissues. |
| 经测试应用 | 适用于: IHC-P, IP, WB, ICC/IF |
| 种属反应性 | 与反应: Mouse, Rat, Human |
| 免疫原 | Synthetic peptide corresponding to Human PDE5A/PDE5. Synthetic peptide common to all PDE5A variants, taken within amino acid region 120-170 of human PDE5A protein. (Peptide available as ab150691) |
| 常规说明 | Storage of very dilute antibody solutions is not recommended. The Life Science industry has been in the grips of a reproducibility crisis for a number of years. Abcam is leading the way in addressing this with our range of recombinant monoclonal antibodies and knockout edited cell lines for gold-standard validation. Please check that this product meets your needs before purchasing. If you have any questions, special requirements or concerns, please send us an inquiry and/or contact our Support team ahead of purchase. Recommended alternatives for this product can be found below, along with publications, customer reviews and Q&As |

性能

| | |
|------|---|
| 形式 | Liquid |
| 存放说明 | Shipped at 4°C. Upon delivery aliquot and store at -20°C. Avoid freeze / thaw cycles. |
| 存储溶液 | Preservative: 0.02% Sodium azide |
| 纯度 | Immunogen affinity purified |
| 纯化说明 | Purified on antigen sepharose affinity column. |
| 克隆 | 多克隆 |
| 同种型 | IgG |

应用

The Abpromise guarantee

Abpromise™ 承诺保证使用ab14672于以下的经测试应用

“应用说明”部分 下显示的仅为推荐的起始稀释度;实际最佳的稀释度/浓度应由使用者检定。

| 应用 | Ab评论 | 说明 |
|--------|-----------|---|
| IHC-P | ★★★★★ (1) | 1/10. Perform heat mediated antigen retrieval before commencing with IHC staining protocol. |
| IP | | Use at an assay dependent concentration. |
| WB | | Use at an assay dependent concentration. |
| ICC/IF | | Use a concentration of 1 µg/ml. |

靶标

| | |
|-------|--|
| 功能 | Plays a role in signal transduction by regulating the intracellular concentration of cyclic nucleotides. This phosphodiesterase catalyzes the specific hydrolysis of cGMP to 5'-GMP. |
| 组织特异性 | Expressed in aortic smooth muscle cells, heart, placenta, skeletal muscle and pancreas and, to a much lesser extent, in brain, liver and lung. |
| 通路 | Purine metabolism; 3',5'-cyclic GMP degradation; GMP from 3',5'-cyclic GMP: step 1/1. |
| 序列相似性 | Belongs to the cyclic nucleotide phosphodiesterase family. Contains 2 GAF domains. |
| 结构域 | Composed of a C-terminal catalytic domain containing two putative divalent metal sites and an N-terminal regulatory domain which contains two homologous allosteric cGMP-binding regions, A and B. |
| 翻译后修饰 | Phosphorylation is regulated by binding of cGMP to the two allosteric sites. |

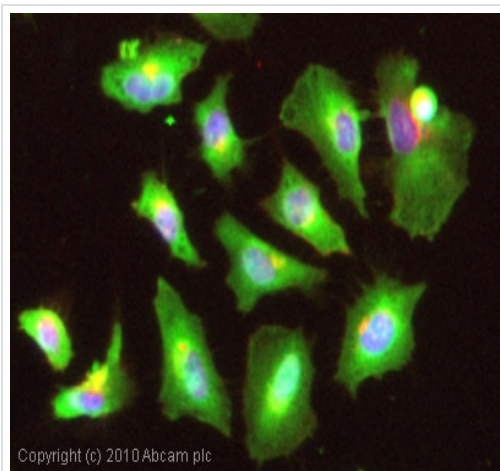
图片



ab14672 (4µg/ml) staining PDE5A/PDE5 in human oesophagus using an automated system (DAKO Autostainer Plus). Using this protocol there is staining of the cytoplasm and nuclei in stratified squamous epithelium cells.

Sections were rehydrated and antigen retrieved with the Dako 3 in 1 AR buffers EDTA pH 9.0 in a DAKO PT link. Slides were peroxidase blocked in 3% H2O2 in methanol for 10 mins. They were then blocked with Dako Protein block for 10 minutes (containing casein 0.25% in PBS) then incubated with primary antibody for 20 min and detected with Dako envision flex amplification kit for 30 minutes. Colorimetric detection was completed with Diaminobenzidine for 5 minutes. Slides were counterstained with Haematoxylin and coverslipped under DePeX. Please note that, for manual staining, optimization of primary antibody concentration and incubation time is recommended.

Signal amplification may be required.



Immunocytochemistry/ Immunofluorescence - Anti-PDE5A/PDE5 antibody (ab14672)

ICC/IF image of ab14672 stained HeLa cells. The cells were 4% PFA fixed (10 min) and then incubated in 1%BSA / 10% normal goat serum / 0.3M glycine in 0.1% PBS-Tween for 1h to permeabilise the cells and block non-specific protein-protein interactions. The cells were then incubated with the antibody (ab14672, 1µg/ml) overnight at +4°C. The secondary antibody (green) was Alexa Fluor® 488 goat anti-rabbit IgG (H+L) used at a 1/1000 dilution for 1h. Alexa Fluor® 594 WGA was used to label plasma membranes (red) at a 1/200 dilution for 1h. DAPI was used to stain the cell nuclei (blue) at a concentration of 1.43µM.

Please note: All products are "FOR RESEARCH USE ONLY. NOT FOR USE IN DIAGNOSTIC PROCEDURES"

Our Abpromise to you: Quality guaranteed and expert technical support

- Replacement or refund for products not performing as stated on the datasheet
- Valid for 12 months from date of delivery
- Response to your inquiry within 24 hours
- We provide support in Chinese, English, French, German, Japanese and Spanish
- Extensive multi-media technical resources to help you
- We investigate all quality concerns to ensure our products perform to the highest standards

If the product does not perform as described on this datasheet, we will offer a refund or replacement. For full details of the Abpromise, please visit <https://www.abcam.cn/abpromise> or contact our technical team.

Terms and conditions

- Guarantee only valid for products bought direct from Abcam or one of our authorized distributors