

Anti-PDE4D3 antibody ab14614

[3 References](#) [1 图像](#)

概述

产品名称	Anti-PDE4D3抗体
描述	兔多克隆抗体to PDE4D3
宿主	Rabbit
特异性	ab14614 does not cross react with PDE4D1, D2, D4 and D5. Does not cross react with PDE4A, PDE4B or PDE4C.
经测试应用	适用于: WB
种属反应性	与反应: Human
免疫原	Synthetic peptide corresponding to PDE4D3 (N terminal).
常规说明	<p>The Life Science industry has been in the grips of a reproducibility crisis for a number of years. Abcam is leading the way in addressing this with our range of recombinant monoclonal antibodies and knockout edited cell lines for gold-standard validation. Please check that this product meets your needs before purchasing.</p> <p>If you have any questions, special requirements or concerns, please send us an inquiry and/or contact our Support team ahead of purchase. Recommended alternatives for this product can be found below, along with publications, customer reviews and Q&As</p>

性能

形式	Liquid
存放说明	Shipped at 4°C. Store at +4°C short term (1-2 weeks). Upon delivery aliquot. Store at -20°C or -80°C. Avoid freeze / thaw cycle.
存储溶液	Preservative: 0.02% Sodium azide
纯度	Immunogen affinity purified
克隆	多克隆
同种型	IgG

应用

The Abpromise guarantee **Abpromise™**承诺保证使用ab14614于以下的经测试应用

“应用说明”部分 下显示的仅为推荐的起始稀释度;实际最佳的稀释度/浓度应由使用者检定。

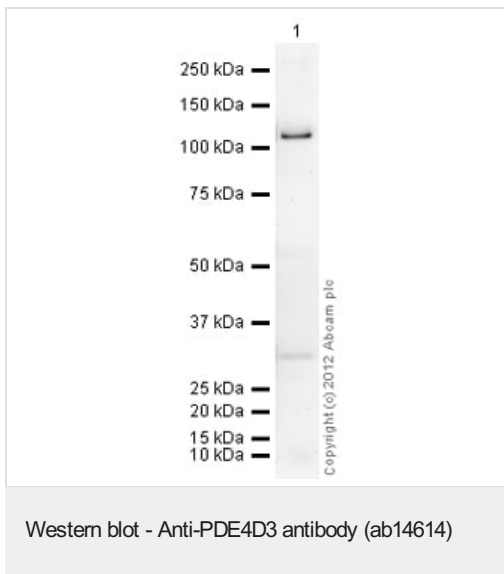
应用	Ab评论	说明
WB		1/500. Detects a band of approximately 93 kDa.

靶标

相关性 Cyclic AMP-dependent phosphodiesterase type D (PDE4D) family is comprised of 5 variants (PDE4D1, D2, D3, D4 and D5). One or more PDE4D subtype-variants are ubiquitously present in all mammalian cells. In CNS all five PDE4D subtype-variants are expressed in varying ratios and their activity is regulated in tandem with GPCRs stimulation. Peripheral tissues also exhibit differential expression of PDE4D variants. PDE4D1/D2 mRNA levels rise in response to an increase in cAMP. Short-term regulation of PDE4D variants involved PKA, MAP kinases and Erk2 phosphorylation that results in rapid change in their enzymatic activities. Other regulatory mechanism involved protein-protein interactions with cytoskeletal scaffolding proteins.

细胞定位 Cell Membrane and Cytoplasmic

图片



Please note: All products are "FOR RESEARCH USE ONLY. NOT FOR USE IN DIAGNOSTIC PROCEDURES"

Our Abpromise to you: Quality guaranteed and expert technical support

- Replacement or refund for products not performing as stated on the datasheet
- Valid for 12 months from date of delivery
- Response to your inquiry within 24 hours
- We provide support in Chinese, English, French, German, Japanese and Spanish
- Extensive multi-media technical resources to help you
- We investigate all quality concerns to ensure our products perform to the highest standards

If the product does not perform as described on this datasheet, we will offer a refund or replacement. For full details of the Abpromise, please visit <https://www.abcam.cn/abpromise> or contact our technical team.

Terms and conditions

- Guarantee only valid for products bought direct from Abcam or one of our authorized distributors