

Anti-PDCD4 antibody [EPR3432] ab79405

敲除验证
重组
RabMAb

[10 References](#)
[6 图像](#)

概述

产品名称	Anti-PDCD4抗体[EPR3432]
描述	兔单克隆抗体[EPR3432] to PDCD4
宿主	Rabbit
经测试应用	适用于: WB, IHC-P, ICC/IF 不适用于: IP
种属反应性	与反应: Mouse, Human
免疫原	Synthetic peptide. This information is proprietary to Abcam and/or its suppliers.
阳性对照	WB: HeLa, HAP1, and Jurkat whole cell lysate. IHC-P: Human breast carcinoma tissue. ICC/IF: HeLa cells
常规说明	<p>This product is a recombinant monoclonal antibody, which offers several advantages including:</p> <ul style="list-style-type: none"> - High batch-to-batch consistency and reproducibility - Improved sensitivity and specificity - Long-term security of supply - Animal-free production <p>For more information see here.</p> <p>Our RabMAb[®] technology is a patented hybridoma-based technology for making rabbit monoclonal antibodies. For details on our patents, please refer to RabMAb[®] patents.</p> <p>Rat: We have preliminary internal testing data to indicate this antibody may not react with this species. Please contact us for more information.</p>

性能

形式	Liquid
存放说明	Shipped at 4°C. Store at -20°C. Stable for 12 months at -20°C.
存储溶液	pH: 7.20 Preservative: 0.05% Sodium azide Constituents: 0.1% BSA, 40% Glycerol (glycerin, glycerine), 9.85% Tris glycine, 50% Tissue culture supernatant
纯度	Protein A purified

克隆	单克隆
克隆编号	EPR3432
同种型	IgG

应用

The Abpromise guarantee **Abpromise™**承诺保证使用ab79405于以下的经测试应用

“应用说明”部分下显示的仅为推荐的起始稀释度;实际最佳的稀释度/浓度应由使用者检定。

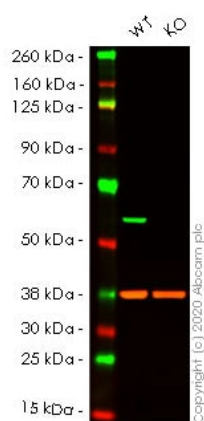
应用	Ab评论	说明
WB		1/5000 - 1/10000. Detects a band of approximately 52 kDa (predicted molecular weight: 52 kDa).
IHC-P		1/1000 - 1/2000. Perform heat mediated antigen retrieval before commencing with IHC staining protocol.
ICC/IF		1/500.

应用说明 Is unsuitable for IP.

靶标

功能	Inhibits translation initiation and cap-dependent translation. May exert its function by hindering the interaction between EIF4A1 and EIF4G. Inhibits the helicase activity of EIF4A. Modulates the activation of JUN kinase. Down-regulates the expression of MAP4K1, thus inhibiting events important in driving invasion, namely, MAPK85 activation and consequent JUN-dependent transcription. May play a role in apoptosis. Tumor suppressor. Inhibits tumor promoter-induced neoplastic transformation. Binds RNA.
组织特异性	Up-regulated in proliferative cells. Highly expressed in epithelial cells of the mammary gland. Reduced expression in lung cancer and colon carcinoma.
序列相似性	Belongs to the PDCD4 family. Contains 2 MI domains.
结构域	Binds EIF4A1 via both MI domains.
翻译后修饰	Polyubiquitinated, leading to its proteasomal degradation. Rapidly degraded in response to mitogens. Phosphorylation of the phosphodegron promotes interaction with BTRC and proteasomal degradation.
细胞定位	Nucleus. Cytoplasm. Shuttles between the nucleus and cytoplasm. Predominantly nuclear under normal growth conditions, and when phosphorylated at Ser-457. Exported from the nucleus in the absence of serum.

图片



Western blot - Anti-PDCD4 antibody [EPR3432] (ab79405)

All lanes : Anti-PDCD4 antibody [EPR3432] (ab79405) at 1/5000 dilution

Lane 1 : Wild-type HeLa cell lysate

Lane 2 : PDCD4 knockout HeLa cell lysate

Lysates/proteins at 20 µg per lane.

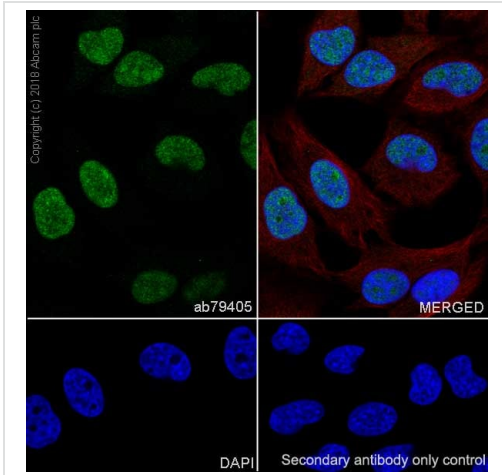
Performed under reducing conditions.

Predicted band size: 52 kDa

Observed band size: 51 kDa

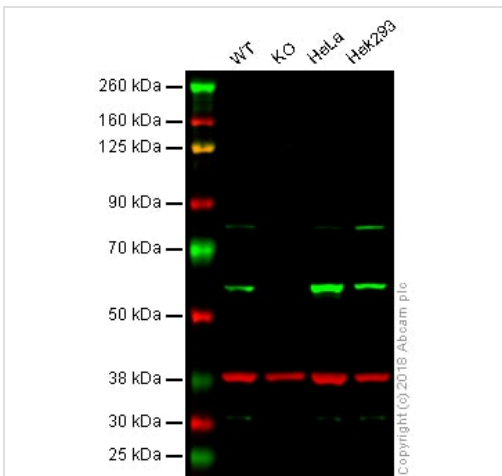
Lanes 1-2: Merged signal (red and green). Green - ab79405 observed at 51 kDa. Red - Anti-GAPDH antibody [6C5] - Loading Control ([ab8245](#)) observed at 37 kDa.

ab79405 was shown to react with PDCD4 in wild-type HeLa cells in western blot. Loss of signal was observed when knockout cell line [ab261833](#) (knockout cell lysate [ab257278](#)) was used. Wild-type HeLa and PDCD4 knockout HeLa cell lysates were subjected to SDS-PAGE. Membrane was blocked for 1 hour at room temperature in 0.1% TBST with 3% non-fat dried milk. ab79405 and Anti-GAPDH antibody [6C5] - Loading Control ([ab8245](#)) overnight at 4°C at a 1 in 5000 dilution and a 1 in 20000 dilution respectively. Blots were developed with Goat anti-Rabbit IgG H&L (IRDye®800CW) preadsorbed ([ab216773](#)) and Goat anti-Mouse IgG H&L (IRDye®680RD) preadsorbed ([ab216776](#)) secondary antibodies at 1 in 20000 dilution for 1 hour at room temperature before imaging.



Immunocytochemistry/ Immunofluorescence - Anti-PDCD4 antibody [EPR3432] (ab79405)

Immunocytochemistry/ Immunofluorescence analysis of HeLa (human cervix adenocarcinoma epithelial cell) cells labeling PDCD4 with purified ab79405 at 1/500 dilution (4 µg/mL). Cells were fixed in 4% Paraformaldehyde and permeabilized with 0.1% tritonX-100. Cells were counterstained with [ab195889](#) Anti-alpha Tubulin antibody [DM1A] - Microtubule Marker (Alexa Fluor® 594) 1/200 (2.5 µg/mL). Goat anti rabbit IgG (Alexa Fluor® 488, [ab150077](#)) was used as the secondary antibody at 1/1000 (2 µg/mL) dilution. DAPI (blue) was used as nuclear counterstain. [ab195889](#) Anti-alpha Tubulin antibody [DM1A] - Microtubule Marker (Alexa Fluor® 594) 1/200 (2.5 µg/mL) was used as the secondary antibody only control.



Western blot - Anti-PDCD4 antibody [EPR3432] (ab79405)

All lanes : Anti-PDCD4 antibody [EPR3432] (ab79405) at 1/5000 dilution

Lane 1 : Wild-type HAP1 whole cell lysate

Lane 2 : PDCD4 knockout HAP1 whole cell lysate

Lane 3 : HeLa whole cell lysate

Lane 4 : HEK293 whole cell lysate

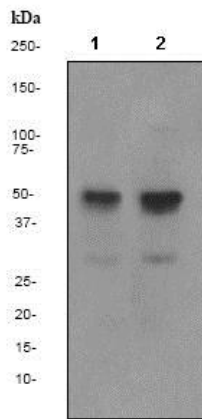
Lysates/proteins at 20 µg per lane.

Predicted band size: 52 kDa

Lanes 1 - 4: Merged signal (red and green). Green - ab79405 observed at 52 kDa. Red - loading control, [ab9484](#), observed at 37 kDa.

ab79405 was shown to recognize PDCD4 in wild-type HAP1 cells as signal was lost at the expected MW in PDCD4 knockout HAP1 cells. Additional cross-reactive bands were observed in the wild-

type and knockout cells. Wild-type and PDCD4 knockout samples were subjected to SDS-PAGE. ab79405 and [ab9484](#) (Mouse anti-GAPDH loading control) were incubated overnight at 4°C at 1/5000 dilution and 1/20000 dilution respectively. Blots were developed with Goat anti-Rabbit IgG H&L (IRDye® 800CW) preabsorbed [ab216773](#) and Goat anti-Mouse IgG H&L (IRDye® 680RD) preabsorbed [ab216776](#) secondary antibodies at 1/10000 dilution for 1 hour at room temperature before imaging.



Western blot - Anti-PDCD4 antibody [EPR3432] (ab79405)

All lanes : Anti-PDCD4 antibody [EPR3432] (ab79405) at 1/10000 dilution

Lane 1 : Jurkat cell lysate

Lane 2 : HeLa cell lysate

Lysates/proteins at 10 µg per lane.

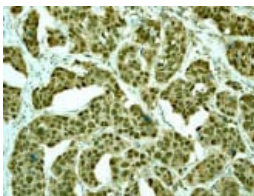
Secondary

All lanes : Goat anti-rabbit HRP at 1/2000 dilution

Predicted band size: 52 kDa

Observed band size: 52 kDa

Additional bands at: 30 kDa. We are unsure as to the identity of these extra bands.







Immunohistochemistry (Formalin/PFA-fixed paraffin-embedded sections) - Anti-PDCD4 antibody [EPR3432] (ab79405)

ab79405 at 1/1000 dilution staining PDCD4 in human breast carcinoma by Immunohistochemistry using paraffin-embedded tissue.

Perform heat mediated antigen retrieval before commencing with IHC staining protocol.

Why choose a recombinant antibody?

 Research with confidence Consistent and reproducible results	 Long-term and scalable supply Recombinant technology
 Success from the first experiment Confirmed specificity	 Ethical standards compliant Animal-free production

Anti-PDCD4 antibody [EPR3432] (ab79405)

Please note: All products are "FOR RESEARCH USE ONLY. NOT FOR USE IN DIAGNOSTIC PROCEDURES"

Our Abpromise to you: Quality guaranteed and expert technical support

- Replacement or refund for products not performing as stated on the datasheet
- Valid for 12 months from date of delivery
- Response to your inquiry within 24 hours
- We provide support in Chinese, English, French, German, Japanese and Spanish
- Extensive multi-media technical resources to help you
- We investigate all quality concerns to ensure our products perform to the highest standards

If the product does not perform as described on this datasheet, we will offer a refund or replacement. For full details of the Abpromise, please visit <https://www.abcam.cn/abpromise> or contact our technical team.

Terms and conditions

- Guarantee only valid for products bought direct from Abcam or one of our authorized distributors