


Anti-PDCD2 antibody [EPR7158] ab133324

重组 RabMAb

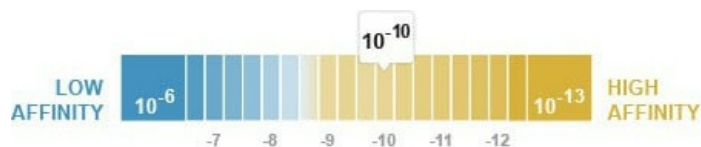
4 References [3 图像](#)

概述

产品名称	Anti-PDCD2抗体[EPR7158]
描述	兔单克隆抗体[EPR7158] to PDCD2
宿主	Rabbit
经测试应用	适用于: WB 不适用于: Flow Cyt, ICC/IF or IHC-P
种属反应性	与反应: Human 预测可用于: Mouse, Rat 
免疫原	Synthetic peptide. This information is proprietary to Abcam and/or its suppliers.
阳性对照	293T, HeLa, and Ramos cell lysates.
常规说明	This product is a recombinant monoclonal antibody, which offers several advantages including: <ul style="list-style-type: none"> - High batch-to-batch consistency and reproducibility - Improved sensitivity and specificity - Long-term security of supply - Animal-free production For more information see here . Our RabMAb [®] technology is a patented hybridoma-based technology for making rabbit monoclonal antibodies. For details on our patents, please refer to RabMAb[®] patents .

性能

形式	Liquid
存放说明	Shipped at 4°C. Store at -20°C. Stable for 12 months at -20°C.
解离常数 (K_D)	K _D = 1.06 x 10 ⁻¹⁰ M



[Learn more about K_D](#)

存储溶液 pH: 7.20

Preservative: 0.01% Sodium azide
Constituents: 9% PBS, 40% Glycerol (glycerin, glycerine), 0.05% BSA, 50% Tissue culture supernatant

纯度 Tissue culture supernatant
克隆 单克隆
克隆编号 EPR7158
同种型 IgG

应用

The Abpromise guarantee **Abpromise™**承诺保证使用ab133324于以下的经测试应用

“应用说明”部分 下显示的仅为推荐的起始稀释度;实际最佳的稀释度/浓度应由使用者检定。

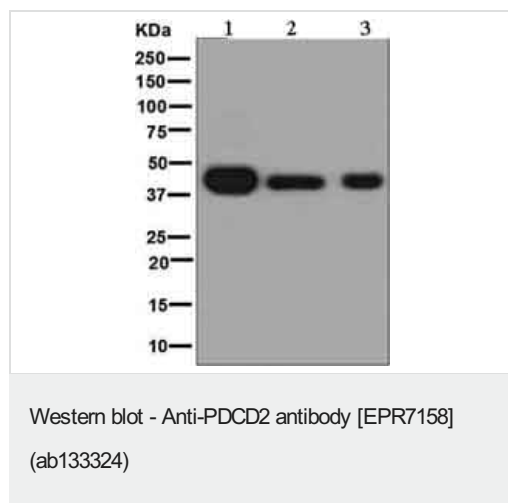
应用	Ab评论	说明
WB		1/1000 - 1/10000. Predicted molecular weight: 39 kDa.

应用说明 Is unsuitable for Flow Cyt, ICC/IF or IHC-P.

靶标

功能 May be a DNA-binding protein with a regulatory function. May play an important role in cell death and/or in regulation of cell proliferation.
组织特异性 Ubiquitous.
序列相似性 Contains 1 MYND-type zinc finger.
细胞定位 Nucleus.

图片



All lanes : Anti-PDCD2 antibody [EPR7158] (ab133324) at 1/1000 dilution

Lane 1 : 293T cell lysate

Lane 2 : HeLa cell lysate

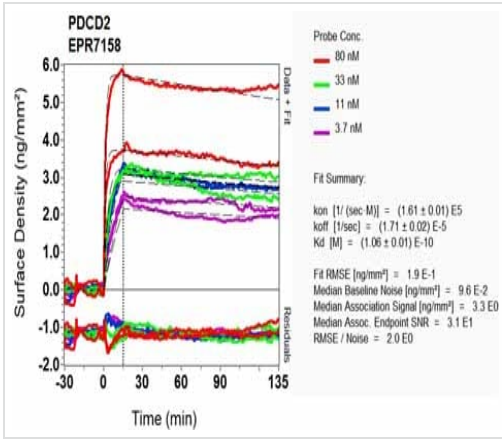
Lane 3 : Ramos cell lysate

Lysates/proteins at 10 µg per lane.

Secondary

All lanes : HRP labelled goat anti-rabbit at 1/2000 dilution

Predicted band size: 39 kDa



OI-RD Scanning - Anti-PDCD2 antibody [EPR7158]
(ab133324)

Equilibrium disassociation constant (K_D)

Learn more about K_D

[Click here to learn more about \$K_D\$](#)

Why choose a recombinant antibody?

Research with confidence
Consistent and reproducible results

Long-term and scalable supply
Recombinant technology

Success from the first experiment
Confirmed specificity

Ethical standards compliant
Animal-free production

Anti-PDCD2 antibody [EPR7158] (ab133324)

Please note: All products are "FOR RESEARCH USE ONLY. NOT FOR USE IN DIAGNOSTIC PROCEDURES"

Our Abpromise to you: Quality guaranteed and expert technical support

- Replacement or refund for products not performing as stated on the datasheet
- Valid for 12 months from date of delivery
- Response to your inquiry within 24 hours
- We provide support in Chinese, English, French, German, Japanese and Spanish
- Extensive multi-media technical resources to help you
- We investigate all quality concerns to ensure our products perform to the highest standards

If the product does not perform as described on this datasheet, we will offer a refund or replacement. For full details of the Abpromise, please visit <https://www.abcam.cn/abpromise> or contact our technical team.

Terms and conditions

- Guarantee only valid for products bought direct from Abcam or one of our authorized distributors