

Anti-PD1 antibody [RMP1-14] - Low endotoxin, Azide free ab171265

1 图像

概述

产品名称	Anti-PD1抗体[RMP1-14] - Low endotoxin, Azide free
描述	大鼠单克隆抗体[RMP1-14] to PD1 - Low endotoxin, Azide free
宿主	Rat
经测试应用	适用于: Flow Cyt
种属反应性	与反应: Mouse
免疫原	The details of the immunogen for this antibody are not available.
阳性对照	3-day ConA-stimulated BALB/c splenocytes
常规说明	<p>The Life Science industry has been in the grips of a reproducibility crisis for a number of years. Abcam is leading the way in addressing this with our range of recombinant monoclonal antibodies and knockout edited cell lines for gold-standard validation. Please check that this product meets your needs before purchasing.</p> <p>If you have any questions, special requirements or concerns, please send us an inquiry and/or contact our Support team ahead of purchase. Recommended alternatives for this product can be found below, along with publications, customer reviews and Q&As</p>

性能

形式	Liquid
存放说明	Shipped at 4°C. Store at +4°C short term (1-2 weeks). Upon delivery aliquot. Store at -20°C long term. Avoid freeze / thaw cycle.
存储溶液	pH: 7.2 Constituent: PBS
无载体	是
纯度	Protein G purified
克隆	单克隆
克隆编号	RMP1-14
同种型	IgG2a
轻链类型	kappa

应用

The Abpromise guarantee **Abpromise™**承诺保证使用ab171265于以下的经测试应用

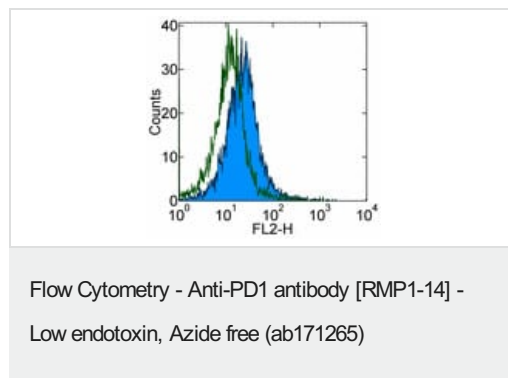
“应用说明”部分 下显示的仅为推荐的起始稀释度;实际最佳的稀释度/浓度应由使用者检定。

应用	Ab评论	说明
Flow Cyt		Use 1µg for 10 ⁵⁻⁸ cells. ab18450 - Rat monoclonal IgG2a, is suitable for use as an isotype control with this antibody.

靶标

功能	Possible cell death inducer, in association with other factors.
疾病相关	Genetic variation in PDCD1 is associated with susceptibility to systemic lupus erythematosus type 2 (SLEB2) [MIM:605218]. Systemic lupus erythematosus is a chronic, inflammatory and often febrile multisystemic disorder of connective tissue. It affects principally the skin, joints, kidneys and serosal membranes. It is thought to represent a failure of the regulatory mechanisms of the autoimmune system.
序列相似性	Contains 1 Ig-like V-type (immunoglobulin-like) domain.
发展阶段	Induced at programmed cell death.
细胞定位	Membrane.

图片



Flow cytometric analysis of 3-day ConA-stimulated BALB/c splenocytes (right histogram) labeling PD1 with ab171265 with Rat IgG2a K Isotype Control (open histogram). Total viable cells were used for analysis.

Please note: All products are "FOR RESEARCH USE ONLY. NOT FOR USE IN DIAGNOSTIC PROCEDURES"

Our Abpromise to you: Quality guaranteed and expert technical support

- Replacement or refund for products not performing as stated on the datasheet
- Valid for 12 months from date of delivery
- Response to your inquiry within 24 hours
- We provide support in Chinese, English, French, German, Japanese and Spanish
- Extensive multi-media technical resources to help you

- We investigate all quality concerns to ensure our products perform to the highest standards

If the product does not perform as described on this datasheet, we will offer a refund or replacement. For full details of the Abpromise, please visit <https://www.abcam.cn/abpromise> or contact our technical team.

Terms and conditions

- Guarantee only valid for products bought direct from Abcam or one of our authorized distributors