

Anti-PD-L1 antibody [MIH6] - Low endotoxin, Azide free ab80276

★★★★★ [5 Abreviews](#) [13 References](#) [1 图像](#)

概述

产品名称	Anti-PD-L1抗体[MIH6] - Low endotoxin, Azide free
描述	大鼠单克隆抗体[MIH6] to PD-L1 - Low endotoxin, Azide free
宿主	Rat
经测试应用	适用于: Flow Cyt
种属反应性	与反应: Mouse
免疫原	Tissue, cells or virus. This information is proprietary to Abcam and/or its suppliers.
阳性对照	Flow Cyt: C57BL/6 mouse splenocytes.
常规说明	<p>Please note the manufacture has changed and this item is currently only recommended for Flow Cytometry.</p> <p>The Life Science industry has been in the grips of a reproducibility crisis for a number of years. Abcam is leading the way in addressing this with our range of recombinant monoclonal antibodies and knockout edited cell lines for gold-standard validation. Please check that this product meets your needs before purchasing.</p> <p>If you have any questions, special requirements or concerns, please send us an inquiry and/or contact our Support team ahead of purchase. Recommended alternatives for this product can be found below, along with publications, customer reviews and Q&As</p>

性能

形式	Liquid
存放说明	Shipped at 4°C. Store at +4°C short term (1-2 weeks). Upon delivery aliquot. Store at -20°C. Avoid freeze / thaw cycle.
存储溶液	pH: 7.20 Constituent: PBS
无载体	是
纯度	Affinity purified
纯化说明	<0.01 EU/ug Endotoxin (LAL).
克隆	单克隆
克隆编号	MIH6
同种型	IgG2a

应用

The Abpromise guarantee

Abpromise™承诺保证使用ab80276于以下的经测试应用

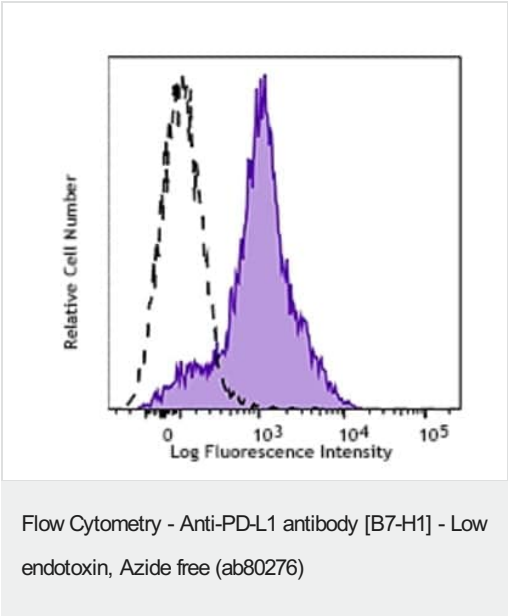
“应用说明”部分 下显示的仅为推荐的起始稀释度;实际最佳的稀释度/浓度应由使用者检定。

应用	Ab评论	说明
Flow Cyt		Use at an assay dependent concentration. Use = 0.5 µg per million cells in 100 µl volume or 100 µl of whole blood.

靶标

功能	Involved in the costimulatory signal, essential for T-cell proliferation and production of IL10 and IFNG, in an IL2-dependent and a PDCD1-independent manner. Interaction with PDCD1 inhibits T-cell proliferation and cytokine production.
组织特异性	Highly expressed in the heart, skeletal muscle, placenta and lung. Weakly expressed in the thymus, spleen, kidney and liver. Expressed on activated T- and B-cells, dendritic cells, keratinocytes and monocytes.
序列相似性	Belongs to the immunoglobulin superfamily. BTN/MOG family. Contains 1 Ig-like C2-type (immunoglobulin-like) domain. Contains 1 Ig-like V-type (immunoglobulin-like) domain.
细胞定位	Cell membrane and Endomembrane system.

图片



C57BL/6 mouse splenocytes were stained with ab80276 (purple filled histogram) or purified rat IgG2a, κ isotype control (black dashed line open histogram), followed by anti-Rat IgG PE.

Our Abpromise to you: Quality guaranteed and expert technical support

- Replacement or refund for products not performing as stated on the datasheet
- Valid for 12 months from date of delivery
- Response to your inquiry within 24 hours
- We provide support in Chinese, English, French, German, Japanese and Spanish
- Extensive multi-media technical resources to help you
- We investigate all quality concerns to ensure our products perform to the highest standards

If the product does not perform as described on this datasheet, we will offer a refund or replacement. For full details of the Abpromise, please visit <https://www.abcam.cn/abpromise> or contact our technical team.

Terms and conditions

- Guarantee only valid for products bought direct from Abcam or one of our authorized distributors