

Anti-PCOLCE antibody - Carboxyterminal end ab39204

1 References [1 图像](#)

概述

产品名称	Anti-PCOLCE抗体- Carboxyterminal end
描述	兔多克隆抗体to PCOLCE - Carboxyterminal end
宿主	Rabbit
特异性	ab39204 recognizes both full sized and cleaved PCOLE1 and does not react with PCOLE2.
经测试应用	适用于: WB
种属反应性	与反应: Human
免疫原	Synthetic peptide based on the end of CUB2 and the beginning of the "linker" region of Human PCOLCE. (Peptide available as ab41294 .)
常规说明	<p>The Life Science industry has been in the grips of a reproducibility crisis for a number of years. Abcam is leading the way in addressing this with our range of recombinant monoclonal antibodies and knockout edited cell lines for gold-standard validation. Please check that this product meets your needs before purchasing.</p> <p>If you have any questions, special requirements or concerns, please send us an inquiry and/or contact our Support team ahead of purchase. Recommended alternatives for this product can be found below, along with publications, customer reviews and Q&As</p>

性能

形式	Liquid
存放说明	Shipped at 4°C. Upon delivery aliquot and store at -20°C. Avoid freeze / thaw cycles.
存储溶液	Preservative: 0.01% Sodium azide Constituent: 50% Glycerol
纯度	Immunogen affinity purified
克隆	多克隆
同种型	IgG

应用

The Abpromise guarantee **Abpromise™**承诺保证使用ab39204于以下的经测试应用

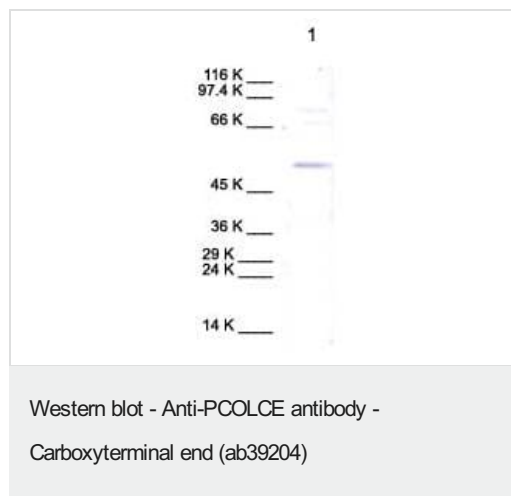
“应用说明”部分 下显示的仅为推荐的起始稀释度;实际最佳的稀释度/浓度应由使用者检定。

应用	Ab评论	说明
WB		Use at an assay dependent dilution. Detects a band of approximately 53 kDa (predicted molecular weight: 48 kDa). A recommended starting concentration for Western blots is 1/1000 when using colorimetric substrates such as BCIP/NBT and 1/5000 for chemiluminescent substrates.

靶标

功能	<p>Binds to the C-terminal propeptide of type I procollagen and enhances procollagen C-proteinase activity.</p> <p>C-terminal processed part of PCPE (CT-PCPE) may have an metalloproteinase inhibitory activity.</p>
序列相似性	<p>Contains 2 CUB domains.</p> <p>Contains 1 NTR domain.</p>
翻译后修饰	C-terminally processed at multiple positions.
细胞定位	Secreted.

图片



Anti-PCOLCE antibody - Carboxyterminal end (ab39204) at 1/1000 dilution + cell lysate from human neonatal dermal fibroblasts

Performed under reducing conditions.

Predicted band size: 48 kDa

Observed band size: 53 kDa

Please note: All products are "FOR RESEARCH USE ONLY. NOT FOR USE IN DIAGNOSTIC PROCEDURES"

Our Abpromise to you: Quality guaranteed and expert technical support

- Replacement or refund for products not performing as stated on the datasheet
- Valid for 12 months from date of delivery
- Response to your inquiry within 24 hours
- We provide support in Chinese, English, French, German, Japanese and Spanish
- Extensive multi-media technical resources to help you

- We investigate all quality concerns to ensure our products perform to the highest standards

If the product does not perform as described on this datasheet, we will offer a refund or replacement. For full details of the Abpromise, please visit <https://www.abcam.cn/abpromise> or contact our technical team.

Terms and conditions

- Guarantee only valid for products bought direct from Abcam or one of our authorized distributors