


# Anti-PCK1/PEPC antibody ab70358

★★★★★ [6 Abreviews](#) [26 References](#) [2 图像](#)

### 概述

产品名称	Anti-PCK1/PEPC抗体
描述	兔多克隆抗体to PCK1/PEPC
宿主	Rabbit
经测试应用	适用于: WB
种属反应性	与反应: Mouse, Rat, Human 预测可用于: Orangutan 
免疫原	Synthetic peptide. This information is proprietary to Abcam and/or its suppliers.
阳性对照	Recombinant Human PCK1/PEPC protein ( <a href="#">ab119469</a> ) can be used as a positive control in WB. This antibody gave a positive signal in the following lysates: HepG2 Whole Cell Lysate Rat Liver Tissue Lysate Mouse Liver Tissue Lysate Human Liver Tissue Lysate - adult normal tissue
常规说明	<p>The Life Science industry has been in the grips of a reproducibility crisis for a number of years. Abcam is leading the way in addressing this with our range of recombinant monoclonal antibodies and knockout edited cell lines for gold-standard validation. Please check that this product meets your needs before purchasing.</p> <p>If you have any questions, special requirements or concerns, please send us an inquiry and/or contact our Support team ahead of purchase. Recommended alternatives for this product can be found below, along with publications, customer reviews and Q&amp;As</p>

### 性能

形式	Liquid
存放说明	Shipped at 4°C. Store at +4°C short term (1-2 weeks). Upon delivery aliquot. Store at -20°C or -80°C. Avoid freeze / thaw cycle.
存储溶液	pH: 7.40 Preservative: 0.02% Sodium azide Constituent: PBS
纯度	Batches of this product that have a concentration < 1mg/ml may have BSA added as a stabilising agent. If you would like information about the formulation of a specific lot, please contact our scientific support team who will be happy to help. Immunogen affinity purified

克隆 多克隆  
同种型 IgG

## 应用

**The Abpromise guarantee** **Abpromise™** 承诺保证使用 ab70358 于以下的经测试应用

“应用说明”部分 下显示的仅为推荐的起始稀释度；实际最佳的稀释度/浓度应由使用者检定。

应用	Ab评论	说明
WB	★★★★★ (5)	Use a concentration of 1 µg/ml. Detects a band of approximately 69 kDa (predicted molecular weight: 69 kDa). Abcam recommends using milk as the blocking agent.

## 靶标

**功能** Catalyzes the conversion of oxaloacetate (OAA) to phosphoenolpyruvate (PEP), the rate-limiting step in the metabolic pathway that produces glucose from lactate and other precursors derived from the citric acid cycle.

**组织特异性** Major sites of expression are liver, kidney and adipocytes.

**通路** Carbohydrate biosynthesis; gluconeogenesis.

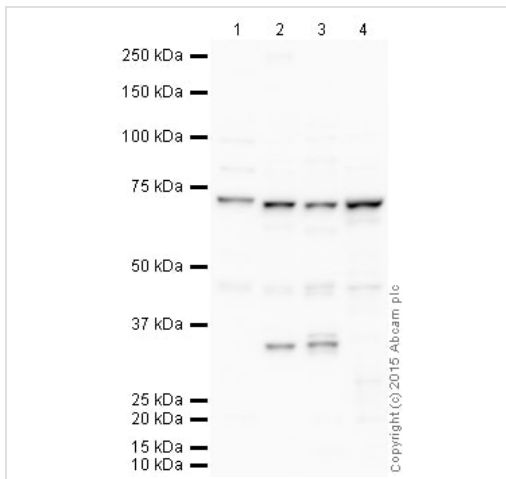
**疾病相关** Defects in PCK1 are the cause of cytosolic phosphoenolpyruvate carboxykinase deficiency (cytosolic PEPCK deficiency) [MIM:261680]. PEPCK deficiency is a metabolic disorder resulting from impaired gluconeogenesis. It is a rare disease with less than 10 cases reported in the literature. Clinical characteristics include hypotonia, hepatomegaly, failure to thrive, lactic acidosis and hypoglycemia. Autopsy reveals fatty infiltration of both the liver and kidneys. The disorder is transmitted as an autosomal recessive trait.

**序列相似性** Belongs to the phosphoenolpyruvate carboxykinase [GTP] family.

**翻译后修饰** Acetylation is increased on addition of glucose and appears to regulate the protein stability.

**细胞定位** Cytoplasm.

## 图片



Western blot - Anti-PCK1/PEPC antibody (ab70358)

**All lanes :** Anti-PCK1/PEPC antibody (ab70358) at 1 µg

**Lane 1 :** HepG2 (Human hepatocellular liver carcinoma cell line)

Whole Cell Lysate

**Lane 2 :** Liver (Rat) Tissue Lysate

**Lane 3 :** Liver (Mouse) Tissue Lysate

**Lane 4 :** Human liver tissue lysate - total protein ([ab29889](#))

Lysates/proteins at 10 µg per lane.

**Secondary**

**All lanes :** Anti-Rabbit IgG VHH Single Domain (HRP) ([ab191866](#))

at 1/50000 dilution

Developed using the ECL technique.

Performed under reducing conditions.

**Predicted band size:** 69 kDa

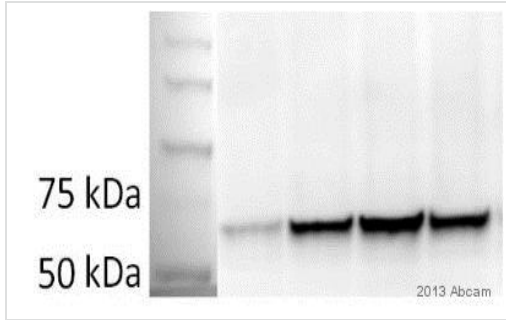
**Observed band size:** 69 kDa

**Additional bands at:** 32 kDa, 45 kDa. We are unsure as to the identity of these extra bands.

**Exposure time:** 20 seconds

This blot was produced using a 4-12% Bis-tris gel under the MOPS buffer system. The gel was run at 200V for 50 minutes before being transferred onto a Nitrocellulose membrane at 30V for 70 minutes. The membrane was then blocked for an hour using 1% Milk before being incubated with ab70358 overnight at 4°C. Antibody binding was detected using an anti-rabbit VHH single domain antibody conjugated to HRP, and visualised using ECL development solution [ab133406](#).

Abcam recommends using milk as the blocking agent. Abcam welcomes customer feedback and would appreciate any comments regarding this product and the data presented above.



Western blot - Anti-PCK1/PEPC antibody (ab70358)

This image is courtesy of an anonymous Abreview

**All lanes :** Anti-PCK1/PEPC antibody (ab70358) at 1 µg/ml

**All lanes :** Mouse adipose tissue lysate

Lysates/proteins at 25 µg per lane.

**Secondary**

**All lanes :** HRP conjugated Donkey anti-rabbit IgG polyclonal at

1/5000 dilution

Developed using the ECL technique.

Performed under reducing conditions.

**Predicted band size:** 69 kDa

**Observed band size:** 69 kDa

**Exposure time:** 5 hours

**Please note:** All products are "FOR RESEARCH USE ONLY. NOT FOR USE IN DIAGNOSTIC PROCEDURES"

**Our Abpromise to you: Quality guaranteed and expert technical support**

---

- Replacement or refund for products not performing as stated on the datasheet
- Valid for 12 months from date of delivery
- Response to your inquiry within 24 hours
  
- We provide support in Chinese, English, French, German, Japanese and Spanish
- Extensive multi-media technical resources to help you
- We investigate all quality concerns to ensure our products perform to the highest standards

If the product does not perform as described on this datasheet, we will offer a refund or replacement. For full details of the Abpromise, please visit <https://www.abcam.cn/abpromise> or contact our technical team.

**Terms and conditions**

---

- Guarantee only valid for products bought direct from Abcam or one of our authorized distributors