


Anti-PCCB antibody ab96729

[2 References](#) [2 图像](#)

概述

产品名称	Anti-PCCB抗体
描述	兔多克隆抗体to PCCB
宿主	Rabbit
经测试应用	适用于: IHC-P, WB
种属反应性	与反应: Human 预测可用于: Mouse, Rat, Cow, Pig, Zebrafish 
免疫原	Recombinant fragment, corresponding to a region within amino acids 167-450 of Human PCCB (NP_000523).
阳性对照	HepG2 whole cell lysate (ab7900) for WB and Lung Ad Cancer PC14 for IHC-P
常规说明	<p>The Life Science industry has been in the grips of a reproducibility crisis for a number of years. Abcam is leading the way in addressing this with our range of recombinant monoclonal antibodies and knockout edited cell lines for gold-standard validation. Please check that this product meets your needs before purchasing.</p> <p>If you have any questions, special requirements or concerns, please send us an inquiry and/or contact our Support team ahead of purchase. Recommended alternatives for this product can be found below, along with publications, customer reviews and Q&As</p>

性能

形式	Liquid
存放说明	Shipped at 4°C. Upon delivery aliquot and store at -20°C or -80°C. Avoid repeated freeze / thaw cycles.
存储溶液	pH: 7.00 Preservative: 0.01% Thimerosal (merthiolate) Constituents: 1.21% Tris, 0.75% Glycine, 10% Glycerol (glycerin, glycerine)
纯度	Immunogen affinity purified
克隆	多克隆
同种型	IgG

应用

The Abpromise guarantee

Abpromise™ 承诺保证使用 ab96729 于以下的经测试应用

“应用说明”部分下显示的仅为推荐的起始稀释度；实际最佳的稀释度/浓度应由使用者检定。

应用	Ab评论	说明
IHC-P		1/100 - 1/250.
WB		1/500 - 1/3000. Predicted molecular weight: 58 kDa.

靶标

通路

Metabolic intermediate metabolism; propanoyl-CoA degradation; succinyl-CoA from propanoyl-CoA: step 1/3.

疾病相关

Defects in PCCB are the cause of propionic acidemia type II (PA-2) [MIM:606054]. PA-2 is a life-threatening disease characterized by episodic vomiting, lethargy and ketosis, neutropenia, periodic thrombocytopenia, hypogammaglobulinemia, developmental retardation, and intolerance to protein.

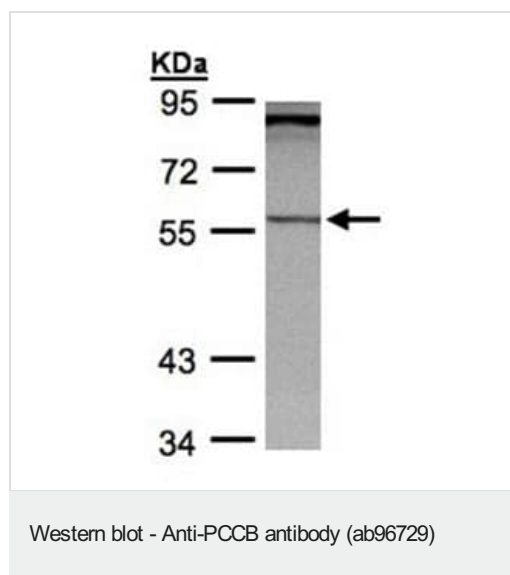
序列相似性

Belongs to the AccD/PCCB family.
Contains 1 carboxyltransferase domain.

细胞定位

Mitochondrion matrix.

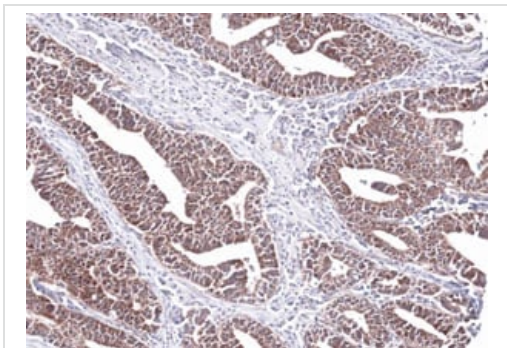
图片



Anti-PCCB antibody (ab96729) at 1/1000 dilution + HepG2 whole cell lysate at 30 µg

Predicted band size: 58 kDa

7.5% SDS PAGE



Immunohistochemical analysis of paraffin-embedded Lung Ad Cancer PC14, using ab96729 at 1:100 dilution.

Immunohistochemistry (Formalin/PFA-fixed paraffin-embedded sections) - Anti-PCCB antibody (ab96729)

Please note: All products are "FOR RESEARCH USE ONLY. NOT FOR USE IN DIAGNOSTIC PROCEDURES"

Our Abpromise to you: Quality guaranteed and expert technical support

- Replacement or refund for products not performing as stated on the datasheet
- Valid for 12 months from date of delivery
- Response to your inquiry within 24 hours
- We provide support in Chinese, English, French, German, Japanese and Spanish
- Extensive multi-media technical resources to help you
- We investigate all quality concerns to ensure our products perform to the highest standards

If the product does not perform as described on this datasheet, we will offer a refund or replacement. For full details of the Abpromise, please visit <https://www.abcam.cn/abpromise> or contact our technical team.

Terms and conditions

- Guarantee only valid for products bought direct from Abcam or one of our authorized distributors