

Anti-PCB antibody [3H2AD9] ab110314

3 References **3 图像**

概述

产品名称	Anti-PCB抗体[3H2AD9]
描述	小鼠单克隆抗体[3H2AD9] to PCB
宿主	Mouse
经测试应用	适用于: ICC/IF, Flow Cyt, IP
种属反应性	与反应: Human
免疫原	Full length native protein (purified). This information is considered to be commercially sensitive.
阳性对照	Human fibroblast and HeLa cells; Human liver tissue lysate.
常规说明	<p>This antibody clone is manufactured by Abcam. If you require a custom buffer formulation or conjugation for your experiments, please contact orders@abcam.com.</p> <p>The Life Science industry has been in the grips of a reproducibility crisis for a number of years. Abcam is leading the way in addressing this with our range of recombinant monoclonal antibodies and knockout edited cell lines for gold-standard validation. Please check that this product meets your needs before purchasing.</p> <p>If you have any questions, special requirements or concerns, please send us an inquiry and/or contact our Support team ahead of purchase. Recommended alternatives for this product can be found below, along with publications, customer reviews and Q&As</p> <p>Product was previously marketed under the MitoSciences sub-brand.</p>

性能

形式	Liquid
存放说明	Shipped at 4°C. Store at +4°C. Do Not Freeze.
存储溶液	<p>pH: 7.5</p> <p>Preservative: 0.02% Sodium azide</p> <p>Constituent: HEPES buffered saline</p>
纯化说明	ab110314 was produced in vitro using hybridomas grown in serum-free medium, and then purified by biochemical fractionation. Purity: >95% by SDS-PAGE.
克隆	单克隆
克隆编号	3H2AD9

同种型	IgG1
轻链类型	kappa

应用

The Abpromise guarantee **Abpromise™**承诺保证使用ab110314于以下的经测试应用

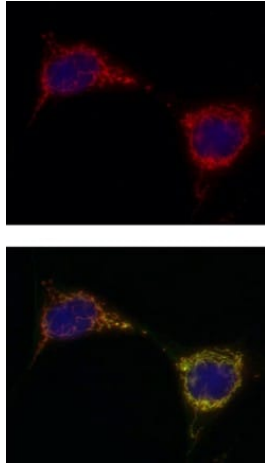
“应用说明”部分 下显示的仅为推荐的起始稀释度;实际最佳的稀释度/浓度应由使用者检定。

应用	Ab评论	说明
ICC/IF		Use a concentration of 5 µg/ml. For 2 hours.
Flow Cyt		Use a concentration of 1 µg/ml. ab170190 - Mouse monoclonal IgG1, is suitable for use as an isotype control with this antibody.
IP		Use at an assay dependent concentration.

靶标

功能	Pyruvate carboxylase catalyzes a 2-step reaction, involving the ATP-dependent carboxylation of the covalently attached biotin in the first step and the transfer of the carboxyl group to pyruvate in the second. Catalyzes in a tissue specific manner, the initial reactions of glucose (liver, kidney) and lipid (adipose tissue, liver, brain) synthesis from pyruvate.
通路	Carbohydrate biosynthesis; gluconeogenesis.
疾病相关	Defects in PC are the cause of pyruvate carboxylase deficiency (PC deficiency) [MIM:266150]. PC deficiency leads to lactic acidosis, mental retardation and death. It occurs in three forms: mild or type A, severe neonatal or type B, and a very mild lacticacidemia.
序列相似性	Contains 1 ATP-grasp domain. Contains 1 biotin carboxylation domain. Contains 1 biotinyl-binding domain. Contains 1 carboxyltransferase domain.
细胞定位	Mitochondrion matrix.

图片

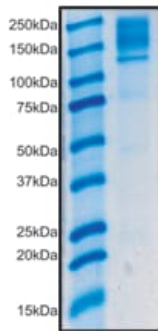


Immunocytochemistry/ Immunofluorescence - Anti-PCB antibody [3H2AD9] (ab110314)

Upper image shows: Immunocytochemistry analysis using ab110314 at 5µg/ml staining PCB in Human fibroblast cells (4% paraformaldehyde fixed and 0.1% Triton X-100 permeabilized) followed by Alexa Fluor® 594 goat anti-mouse IgG (H+L) used at a 1/1000 dilution for 1 hour (red).

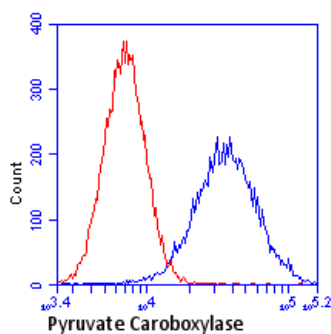
Note: The target protein locates to the mitochondrial matrix.

Lower image shows cells co-stained with an antibody against PDH (green), an enzyme also located in the mitochondrial matrix. The composite image shows an identical mitochondrial pattern for both antibodies indicated by merged orange color.



Immunoprecipitation - Anti-PCB antibody [3H2AD9] (ab110314)

Detection of ab110314 by immunoprecipitation staining of 130kDa PCB in human liver lysate.



Flow cytometric analysis using ab110314 at 1µg/ml staining PCB in HeLa cells (blue). Isotype control antibody (red).

Flow Cytometry - Anti-PCB antibody [3H2AD9]
(ab110314)

Please note: All products are "FOR RESEARCH USE ONLY. NOT FOR USE IN DIAGNOSTIC PROCEDURES"

Our Abpromise to you: Quality guaranteed and expert technical support

- Replacement or refund for products not performing as stated on the datasheet
- Valid for 12 months from date of delivery
- Response to your inquiry within 24 hours
- We provide support in Chinese, English, French, German, Japanese and Spanish
- Extensive multi-media technical resources to help you
- We investigate all quality concerns to ensure our products perform to the highest standards

If the product does not perform as described on this datasheet, we will offer a refund or replacement. For full details of the Abpromise, please visit <https://www.abcam.cn/abpromise> or contact our technical team.

Terms and conditions

- Guarantee only valid for products bought direct from Abcam or one of our authorized distributors