



Anti-Paxillin (phospho Y118) antibody ab75740

4 References **2 图像**

概述

产品名称	Anti-Paxillin (phospho Y118)抗体
描述	兔多克隆抗体to Paxillin (phospho Y118)
宿主	Rabbit
经测试应用	适用于: WB, IHC-P
种属反应性	与反应: Human
免疫原	Synthetic peptide corresponding to Human Paxillin (phospho Y118). <div>  Run BLAST with ExPASy  Run BLAST with NCBI </div>
阳性对照	Human breast carcinoma tissue. Extracts from HeLa cells treated with EGF.
常规说明	<p>The Life Science industry has been in the grips of a reproducibility crisis for a number of years. Abcam is leading the way in addressing this with our range of recombinant monoclonal antibodies and knockout edited cell lines for gold-standard validation. Please check that this product meets your needs before purchasing.</p> <p>If you have any questions, special requirements or concerns, please send us an inquiry and/or contact our Support team ahead of purchase. Recommended alternatives for this product can be found below, along with publications, customer reviews and Q&As</p>

性能

形式	Liquid
存放说明	Shipped at 4°C. Store at -20°C. Stable for 12 months at -20°C.
存储溶液	<p>pH: 7.40</p> <p>Preservative: 0.02% Sodium azide</p> <p>Constituents: 50% Glycerol (glycerin, glycerine), 0.87% Sodium chloride, PBS</p> <p>Without Mg²⁺ and Ca²⁺</p>
纯度	Immunogen affinity purified
纯化说明	ab75740 was affinity-purified from rabbit antiserum by affinity-chromatography using epitope-specific phosphopeptide. The antibody against non-phosphopeptide was removed by chromatography using non-phosphopeptide corresponding to the phosphorylation site.
克隆	多克隆
同种型	IgG

应用

The Abpromise guarantee **Abpromise™**承诺保证使用ab75740于以下的经测试应用

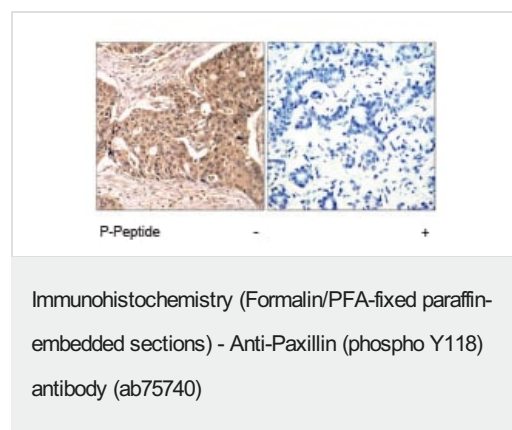
“应用说明”部分 下显示的仅为推荐的起始稀释度;实际最佳的稀释度/浓度应由使用者检定。

应用	Ab评论	说明
WB		1/500 - 1/1000. Detects a band of approximately 64 kDa (predicted molecular weight: 64 kDa).
IHC-P		1/50 - 1/100.

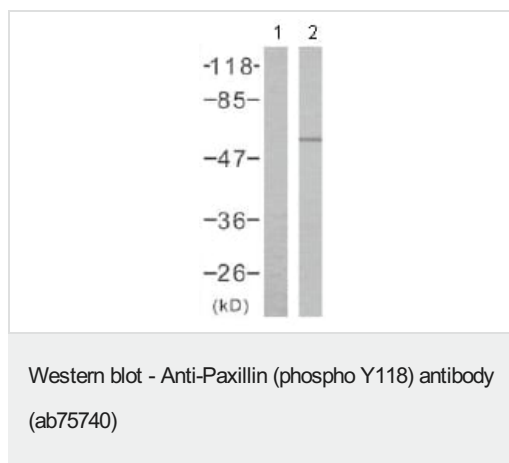
靶标

功能	Cytoskeletal protein involved in actin-membrane attachment at sites of cell adhesion to the extracellular matrix (focal adhesion).
序列相似性	Belongs to the paxillin family. Contains 4 LIM zinc-binding domains.
翻译后修饰	Phosphorylated on tyrosine residues during integrin-mediated cell adhesion, embryonic development, fibroblast transformation and following stimulation of cells by mitogens.
细胞定位	Cytoplasm > cytoskeleton. Cell junction > focal adhesion.

图片



ab75740 at 1/50 dilution staining Paxillin in human breast carcinoma by Immunohistochemistry using paraffin-embedded tissue, in the absence or presence of the immunising phosphopeptide.



All lanes : Anti-Paxillin (phospho Y118) antibody (ab75740) at 1/500 dilution

Lane 1 : HeLa cell extract, untreated

Lane 2 : HeLa cell extract treated with EGF

Predicted band size: 64 kDa

Observed band size: 64 kDa

Please note: All products are "FOR RESEARCH USE ONLY. NOT FOR USE IN DIAGNOSTIC PROCEDURES"

Our Abpromise to you: Quality guaranteed and expert technical support

- Replacement or refund for products not performing as stated on the datasheet
- Valid for 12 months from date of delivery
- Response to your inquiry within 24 hours
- We provide support in Chinese, English, French, German, Japanese and Spanish
- Extensive multi-media technical resources to help you
- We investigate all quality concerns to ensure our products perform to the highest standards

If the product does not perform as described on this datasheet, we will offer a refund or replacement. For full details of the Abpromise, please visit <https://www.abcam.cn/abpromise> or contact our technical team.

Terms and conditions

- Guarantee only valid for products bought direct from Abcam or one of our authorized distributors