


# Anti-Paxillin (phospho Y118) antibody ab4833

**6 References**   **2 图像**

### 概述

|       |   |
|-------|---|
| 产品名称  | Anti-Paxillin (phospho Y118)抗体  |
| 描述    | 兔多克隆抗体to Paxillin (phospho Y118)  |
| 宿主    | Rabbit  |
| 经测试应用 | 适用于: WB   |
| 种属反应性 | 与反应: Mouse, Human, African green monkey<br>预测可用于: Chicken    |
| 免疫原   | Synthetic peptide corresponding to Human Paxillin (phospho Y118).   |
| 阳性对照  | WB: COS-7, A431, HeLa whole cell lysates  |
| 常规说明  | <p>The Life Science industry has been in the grips of a reproducibility crisis for a number of years. Abcam is leading the way in addressing this with our range of recombinant monoclonal antibodies and knockout edited cell lines for gold-standard validation. Please check that this product meets your needs before purchasing.</p> <p>If you have any questions, special requirements or concerns, please send us an inquiry and/or contact our Support team ahead of purchase. Recommended alternatives for this product can be found below, along with publications, customer reviews and Q&amp;As</p> |

### 性能

|      |   |
|------|---|
| 形式   | Liquid  |
| 存放说明 | Shipped at 4°C. Upon delivery aliquot and store at -20°C or -80°C. Avoid repeated freeze / thaw cycles.   |
| 存储溶液 | <p>pH: 7.30</p> <p>Preservative: 0.05% Sodium azide</p> <p>Constituents: PBS, 0.1% BSA</p> <p>BSA is IgG and protease free</p>  |
| 纯度   | Immunogen affinity purified   |
| 纯化说明 | Purified from rabbit serum by sequential epitope-specific chromatography. The antibody has been negatively preadsorbed using i) a non-phosphopeptide corresponding to the site of phosphorylation to remove antibody that is reactive with non-phosphorylated paxillin, and ii) a generic tyrosine phosphorylated peptide to remove antibody that is reactive with phosphotyrosine, |

irrespective of the sequence. The final product is generated by affinity chromatography using a paxillin-derived peptide that is phosphorylated at tyrosine 31.

**克隆** 多克隆  
**同种型** IgG

## 应用

**The Abpromise guarantee** **Abpromise™**承诺保证使用ab4833于以下的经测试应用

“应用说明”部分 下显示的仅为推荐的起始稀释度;实际最佳的稀释度/浓度应由使用者检定。

| 应用        | Ab评论 | 说明  |
|-----------|------|---|
| <b>WB</b> |      | 1/1000. Predicted molecular weight: 68 kDa. |

## 靶标

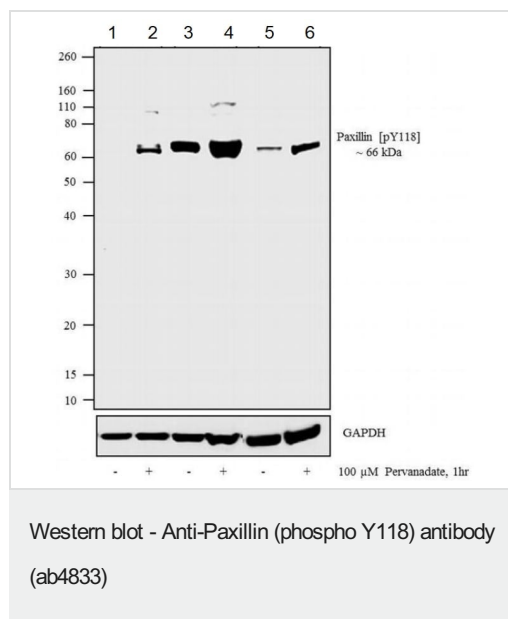
**功能** Cytoskeletal protein involved in actin-membrane attachment at sites of cell adhesion to the extracellular matrix (focal adhesion).

**序列相似性** Belongs to the paxillin family.  
Contains 4 LIM zinc-binding domains.

**翻译后修饰** Phosphorylated on tyrosine residues during integrin-mediated cell adhesion, embryonic development, fibroblast transformation and following stimulation of cells by mitogens.

**细胞定位** Cytoplasm > cytoskeleton. Cell junction > focal adhesion.

## 图片



**All lanes :** Anti-Paxillin (phospho Y118) antibody (ab4833) at 1/500 dilution

**Lane 1 :** COS-7 (African green monkey kidney fibroblast-like cell line) whole cell lysate

**Lane 2 :** COS-7 whole cell lysate treated with 100 μM Pervanadate for 1 hour

**Lane 3 :** A431 (Human epidermoid carcinoma cell line) whole cell lysate

**Lane 4 :** A431 whole cell lysate treated with 100 μM Pervanadate for 1 hour

**Lane 5 :** HeLa (Human epithelial cell line from cervix adenocarcinoma) whole cell lysate

**Lane 6 :** HeLa whole cell lysate treated with 100 μM Pervanadate for 1 hour

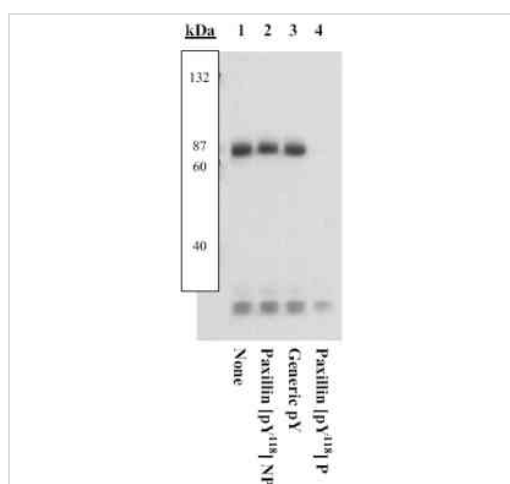
Lysates/proteins at 30 μg per lane.

## Secondary

**All lanes :** Goat anti-Rabbit IgG (H+L) Secondary Antibody, HRP conjugate at 1/5000 dilution

**Predicted band size:** 68 kDa

A 66 kDa band corresponding to Paxillin pTyr118 was enhanced across treated cell lines. Known quantity of protein samples were electrophoresed using Novex® NuPAGE® 12 % Bis-Tris gel, XCell SureLock™ Electrophoresis System and Novex® Sharp Pre-Stained Protein Standard. Resolved proteins were then transferred onto a nitrocellulose membrane with iBlot® 2 Dry Blotting System. The membrane was probed with the relevant primary and secondary Antibody following blocking with 5 % skimmed milk. Chemiluminescent detection was performed using Pierce™ ECL Western Blotting Substrate.



Western blot - Anti-Paxillin (phospho Y118) antibody (ab4833)

**All lanes :** Anti-Paxillin (phospho Y118) antibody (ab4833) at 0.75 µg/ml (3% BSA-TBST buffer)

**All lanes :** NMµMG (mouse mammary) cells transfected with EGFP-tagged paxillin

## Secondary

**All lanes :** goat F(ab')<sub>2</sub> anti-rabbit IgG alkaline phosphatase

**Predicted band size:** 68 kDa

Peptide Competition: Extracts were resolved by SDS-PAGE on a 10% polyacrylamide gel and transferred to PVDF. Membranes were blocked with a 5% BSA-TBST buffer overnight at 4°C.

Prior incubation with:

- 1- no peptide,
- 2- the non-phosphopeptide corresponding to the immunogen
- 3- a generic phosphotyrosine containing peptide
- 4- the phosphopeptide immunogen

Bands were detected using the Tropix WesternStar method.

The data show that only the peptide corresponding to ab4833 blocks the antibody signal, thereby demonstrating the specificity of the antibody.

**Please note:** All products are "FOR RESEARCH USE ONLY. NOT FOR USE IN DIAGNOSTIC PROCEDURES"

#### **Our Abpromise to you: Quality guaranteed and expert technical support**

---

- Replacement or refund for products not performing as stated on the datasheet
- Valid for 12 months from date of delivery
- Response to your inquiry within 24 hours
- We provide support in Chinese, English, French, German, Japanese and Spanish
- Extensive multi-media technical resources to help you
- We investigate all quality concerns to ensure our products perform to the highest standards

If the product does not perform as described on this datasheet, we will offer a refund or replacement. For full details of the Abpromise, please visit <https://www.abcam.cn/abpromise> or contact our technical team.

#### **Terms and conditions**

---

- Guarantee only valid for products bought direct from Abcam or one of our authorized distributors