

Anti-Paxillin antibody [M107] ab23510

敲除验证

4 References 2 图像

概述

| | |
|-------|---|
| 产品名称 | Anti-Paxillin抗体[M107] |
| 描述 | 小鼠单克隆抗体[M107] to Paxillin |
| 宿主 | Mouse |
| 经测试应用 | 适用于: WB |
| 种属反应性 | 与反应: Human |
| 免疫原 | Recombinant full length protein (Human). |
| 阳性对照 | A431 cell lysate. |
| 常规说明 | <p>The Life Science industry has been in the grips of a reproducibility crisis for a number of years. Abcam is leading the way in addressing this with our range of recombinant monoclonal antibodies and knockout edited cell lines for gold-standard validation. Please check that this product meets your needs before purchasing.</p> <p>If you have any questions, special requirements or concerns, please send us an inquiry and/or contact our Support team ahead of purchase. Recommended alternatives for this product can be found below, along with publications, customer reviews and Q&As</p> |

性能

| | |
|------|---|
| 形式 | Liquid |
| 存放说明 | Shipped at 4°C. Store at -20°C. Stable for 12 months at -20°C. |
| 存储溶液 | Preservative: 0.05% Sodium azide Constituents: PBS, 50% Glycerol, 0.1% BSA |
| 纯度 | Protein A purified |
| 克隆 | 单克隆 |
| 克隆编号 | M107 |
| 同种型 | IgG1 |

应用

Abpromise™ 承诺保证使用ab23510于以下的经测试应用

| 应用 | Ab评论 | 说明 |
|----|------|--|
| WB | | 1/1000. Detects a band of approximately 68 kDa (predicted molecular weight: 65 kDa). |

| | |
|-------|--|
| 功能 | Cytoskeletal protein involved in actin-membrane attachment at sites of cell adhesion to the extracellular matrix (focal adhesion). |
| 序列相似性 | Belongs to the paxillin family. Contains 4 LIM zinc-binding domains. |
| 翻译后修饰 | Phosphorylated on tyrosine residues during integrin-mediated cell adhesion, embryonic development, fibroblast transformation and following stimulation of cells by mitogens. |
| 细胞定位 | Cytoplasm > cytoskeleton. Cell junction > focal adhesion. |

Western blot analysis of Paxillin phosphorylation in WT, KO, U-87MG, and PC-3 cells. The blot shows bands for total Paxillin and phosphorylated Paxillin (p-Paxillin) at various molecular weights (260, 160, 125, 90, 70, 50, 38, 30, 25, 15 kDa). The WT and U-87MG lanes show strong bands for p-Paxillin, while the KO and PC-3 lanes show significantly reduced bands. The 38 kDa band is consistent across all lanes, serving as a loading control.

Lane 1 : Wild-type A-431 (Human epidermoid carcinoma cell line) whole cell lysate

Lane 2 : PXN knockout A-431 (Human epidermoid carcinoma cell line) whole cell lysate

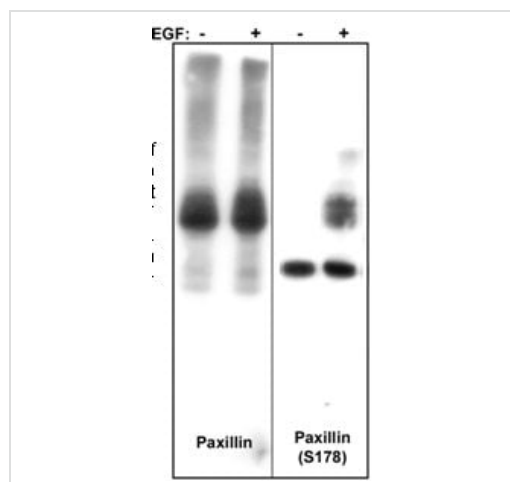
Lane 3 : U-87 MG (Human glioblastoma-astrocytoma epithelial cell line) whole cell lysate

Lane 4 : PC3 (Human prostate adenocarcinoma cell line) whole cell lysate

Performed under reducing conditions.

Lanes 1 - 4: Merged signal (red and green). Green - ab23510 observed at 65 kDa. Red - loading control, **ab181602**, observed at 37 kDa.

ab23510 was shown to recognize PXN in wild-type A431 cells as signal was lost at the expected MW in PXN knockout cells. Additional cross-reactive bands were observed in the wild-type and knockout cells. Wild-type and PXN knockout samples were subjected to SDS-PAGE. Ab23510 and **ab181602** (Rabbit anti-GAPDH loading control) were incubated overnight at 4°C at 1/1000 dilution and 1/20000 dilution respectively. Blots were developed with Goat anti-Mouse IgG H&L (IRDye® 800CW) preabsorbed **ab216772** and Goat anti-Rabbit IgG H&L (IRDye® 680RD) preabsorbed **ab216777** secondary antibodies at 1/20000 dilution for 1 hour at room temperature before imaging.



Western blot - Anti-Paxillin antibody [M107]
(ab23510)

Lanes 1-2 : Anti-Paxillin antibody [M107] (ab23510)

Lanes 3-4 : Anti-Paxillin (Ser178) antibody

Lanes 1 & 3 : A431 cells (20 ug/lane) serum starved overnight

Lanes 2 & 4 : A431 cells (20 ug/lane) serum treated with EGF (100 ng/ml) for 5 min.

Predicted band size: 65 kDa

Membrane was incubated with diluted antibody in 5% non-fat milk, PBS, 0.04% Tween20 for 1hour at room temperature.

Please note: All products are "FOR RESEARCH USE ONLY. NOT FOR USE IN DIAGNOSTIC PROCEDURES"

Our Abpromise to you: Quality guaranteed and expert technical support

- Replacement or refund for products not performing as stated on the datasheet
- Valid for 12 months from date of delivery
- Response to your inquiry within 24 hours
- We provide support in Chinese, English, French, German, Japanese and Spanish
- Extensive multi-media technical resources to help you
- We investigate all quality concerns to ensure our products perform to the highest standards

If the product does not perform as described on this datasheet, we will offer a refund or replacement. For full details of the Abpromise, please visit <https://www.abcam.cn/abpromise> or contact our technical team.

Terms and conditions

- Guarantee only valid for products bought direct from Abcam or one of our authorized distributors