


Anti-Paxillin antibody ab2264

★★★★★ [5 Abreviews](#) [14 References](#) [1 图像](#)

概述

产品名称	Anti-Paxillin抗体
描述	兔多克隆抗体to Paxillin
宿主	Rabbit
经测试应用	适用于: WB
种属反应性	与反应: Mouse 预测可用于: Rat, Chicken, Human 
免疫原	Synthetic peptide. This information is proprietary to Abcam and/or its suppliers.
常规说明	<p>The Life Science industry has been in the grips of a reproducibility crisis for a number of years. Abcam is leading the way in addressing this with our range of recombinant monoclonal antibodies and knockout edited cell lines for gold-standard validation. Please check that this product meets your needs before purchasing.</p> <p>If you have any questions, special requirements or concerns, please send us an inquiry and/or contact our Support team ahead of purchase. Recommended alternatives for this product can be found below, along with publications, customer reviews and Q&As</p>

性能

形式	Liquid
存放说明	Shipped at 4°C. Upon delivery aliquot and store at -20°C or -80°C. Avoid repeated freeze / thaw cycles.
存储溶液	<p>pH: 7.40</p> <p>Preservative: 0.02% Sodium azide</p> <p>Constituent: PBS</p> <p>Batches of this product that have a concentration < 1mg/ml may have BSA added as a stabilising agent. If you would like information about the formulation of a specific lot, please contact our scientific support team who will be happy to help.</p>
纯度	Immunogen affinity purified
克隆	多克隆
同种型	IgG

应用

The Abpromise guarantee **Abpromise™** 承诺保证使用ab2264于以下的经测试应用

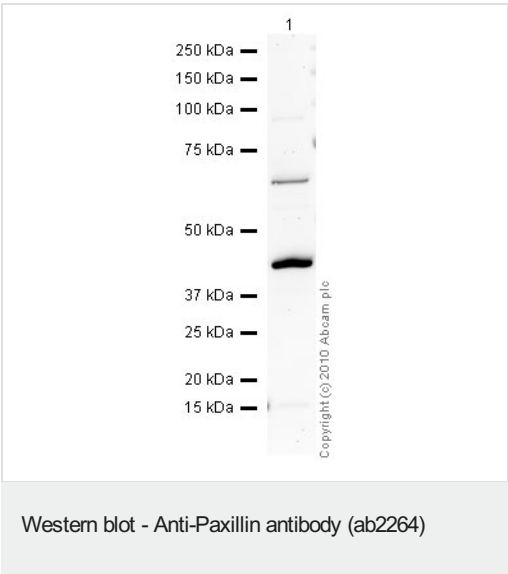
“应用说明”部分 下显示的仅为推荐的起始稀释度;实际最佳的稀释度/浓度应由使用者检定。

应用	Ab评论	说明
WB	★★★★★ (1)	1/500 - 1/1000. Predicted molecular weight: 68 kDa.

靶标

功能	Cytoskeletal protein involved in actin-membrane attachment at sites of cell adhesion to the extracellular matrix (focal adhesion).
序列相似性	Belongs to the paxillin family. Contains 4 LIM zinc-binding domains.
翻译后修饰	Phosphorylated on tyrosine residues during integrin-mediated cell adhesion, embryonic development, fibroblast transformation and following stimulation of cells by mitogens.
细胞定位	Cytoplasm > cytoskeleton. Cell junction > focal adhesion.

图片



Anti-Paxillin antibody (ab2264) at 1/500 dilution + NIH 3T3 (Mouse embryonic fibroblast cell line) Whole Cell Lysate at 20 µg

Secondary

Goat polyclonal to Rabbit IgG - H&L - Pre-Adsorbed (HRP) at 1/3000 dilution

Performed under reducing conditions.

Predicted band size: 68 kDa

Observed band size: 68 kDa

Additional bands at: 43 kDa. We are unsure as to the identity of these extra bands.

Exposure time: 20 minutes

ab2264 detects a band at 68 kDa in NIH 3T3 lysate, as well as an additional band at 43kDa. An NCBI BLAST search of the peptide sequence identified an N terminal fragment of the Paxillin molecule with a primary molecular weight of 36 kDa. We believe the 43 kDa band observed may correspond to this fragment.

Please note: All products are "FOR RESEARCH USE ONLY. NOT FOR USE IN DIAGNOSTIC PROCEDURES"

Our Abpromise to you: Quality guaranteed and expert technical support

- Replacement or refund for products not performing as stated on the datasheet
- Valid for 12 months from date of delivery
- Response to your inquiry within 24 hours
- We provide support in Chinese, English, French, German, Japanese and Spanish
- Extensive multi-media technical resources to help you
- We investigate all quality concerns to ensure our products perform to the highest standards

If the product does not perform as described on this datasheet, we will offer a refund or replacement. For full details of the Abpromise, please visit <https://www.abcam.cn/abpromise> or contact our technical team.

Terms and conditions

- Guarantee only valid for products bought direct from Abcam or one of our authorized distributors